

Past and present distribution, densities and movements of blue whales in the Southern Hemisphere and adjacent waters

T.A. BRANCH¹, K.M. STAFFORD, D.M. PALACIOS, C. ALLISON, J.L. BANNISTER, C.L.K. BURTON, E. CABRERA, C.A. CARLSON, B. GALLETI VERNAZZANI, P.C. GILL, R. HUCKE-GAETE, K.C.S. JENNER, M. N.M. JENNER, K. MATSUOKA, Y.A. MIKHALEV, T. MIYASHITA, M.G. MORRICE, S. NISHIWAKI, V.J. STURROCK, D. TORMOSOV, R.C. ANDERSON, A.N. BAKER, P.B. BEST, P. BORSA, R.L. BROWNELL JR, S. CHILDERHOUSE, K.P. FINDLAY, T. GERRODETTE, A.D. ILANGAKOON, M. JOERGENSEN, B. KAHN, D.K. LJUNGBLAD, B. MAUGHAN, R.D. MCCAULEY, S. MCKAY, T.F. NORRIS, OMAN WHALE AND DOLPHIN RESEARCH GROUP, S. RANKIN, F. SAMARAN, D. THIELE, K. VAN WAEREBEEK AND R.M. WARNEKE

ABSTRACT

1. Blue whale locations in the Southern Hemisphere and northern Indian Ocean were obtained from catches (303,239), sightings (4,383 records of $\geq 8,058$ whales), strandings (103), Discovery marks (2,191) and recoveries (95), and acoustic recordings.
2. Sighting surveys included 7,480,450 km of effort plus 14,676 days with unmeasured effort.
3. Groups usually consisted of solitary whales (65.2%) or pairs (24.6%); larger feeding aggregations of unassociated individuals were only rarely observed.
4. Sighting rates (groups per 1,000 km from many platform types) varied by four orders of magnitude and were lowest in the waters of Brazil, South Africa, the eastern tropical Pacific, Antarctica and South Georgia; higher in the Subantarctic and Peru; and highest around Indonesia, Sri Lanka, Chile, southern Australia and south of Madagascar.
5. Blue whales avoid the oligotrophic central gyres of the Indian, Pacific, and Atlantic Oceans, but are more common where phytoplankton densities are high, and where there are dynamic oceanographic processes like upwelling and frontal meandering.
6. Compared to historical catches, the Antarctic (“true”) subspecies is exceedingly rare and usually concentrated closer to the summer pack ice. In summer they are found throughout the Antarctic; in winter they migrate to southern Africa (although recent sightings there are rare) and to other northerly locations (based on acoustics), although some overwinter in the Antarctic.
7. Pygmy blue whales are found around the Indian Ocean and from southern Australia to New Zealand. At least four groupings are evident: northern Indian Ocean, from Madagascar to the Subantarctic, Indonesia to western and southern Australia, and from New Zealand northwards to the equator. Sighting rates are typically much higher than for Antarctic blue whales.
8. South-east Pacific blue whales have a discrete distribution and high sighting rates compared to the Antarctic. Further work is needed to clarify their subspecific status given their distinctive genetics, acoustics, and length frequencies.
9. Antarctic blue whales numbered 1,700 (95% Bayesian interval 860–2,900) in 1996 (less than 1% of original levels), but are increasing at 7.3% per annum (95% Bayesian interval 1.4–11.6%). The status of other populations in the Southern Hemisphere and northern Indian Ocean is unknown because few abundance estimates are available, but higher recent sighting rates suggest that they are less depleted than Antarctic blue whales.

INTRODUCTION

The blue whale (*Balaenoptera musculus*) is the largest of the mysticete (baleen) whales, with lengths exceeding 30 m. It was once abundant in the Southern Hemisphere, but was subject to intensive exploitation by whaling beginning in 1904 (Branch *et al.*, 2004); this was particularly true in the Antarctic, where blue whales congregated in summer to feed, primarily on krill (*Euphausia superba*).

Despite being the largest animals ever to exist on Earth, surprisingly little is known about the distribution and migration of blue whales in the Southern Hemisphere and northern Indian Ocean. In this region, there are two recognised subspecies, the Antarctic (or true) blue whale (*B. m. intermedia*) and the pygmy blue whale (*B. m. brevicauda*) (Rice, 1998). Compared to pygmy blue whales, Antarctic blue whales attain greater maximum lengths (>30 m vs. 24.1 m), are longer at sexual maturity (23.7 m vs. <19.2 m), and have proportionately longer tail regions (Mackintosh & Wheeler, 1929; Ichihara, 1966). In the austral summer, Antarctic blue whales are generally found south of 55°S while pygmy blue whales are generally believed to remain north of 54°S (Ichihara, 1966; Kato, Miyashita & Shimada, 1995). Based on a combination of evidence

¹ tbranch@gmail.com, Marine Research Assessment and Management Group, Department of Mathematics and Applied Mathematics, University of Cape Town, Rondebosch, 7701, South Africa.

Present address: School of Aquatic and Fishery Sciences, Box 355020, University of Washington, Seattle WA 98195, U.S.A.

from three long-term sightings series, Antarctic blue whales were depleted to very low levels before increasing to 1,700 (95% Bayesian interval 860–2,900) in 1996, but remain at less than 1% of their original abundance of 239,000 (95% Bayesian interval 202,000–311,000) (Branch, Matsuoka & Miyashita, 2004). The status of pygmy blue whales is much more uncertain but their original abundance was probably an order of magnitude lower than that of Antarctic blue whales, and they are likely less depleted at present.

The distribution of blue whales in the Southern Hemisphere and northern Indian Ocean is poorly understood except perhaps for the Antarctic during the austral summer. Some previous studies have assumed that they are distributed throughout this region (e.g. Gambell, 1979; Mizroch, Rice & Breiwick, 1984), presuming that gaps in their distribution are caused by lack of search and catch effort rather than a true absence of blue whales. However, data from Japanese Scouting Vessels (JSV, 1965–1987) show that despite widespread effort, sightings were concentrated in the South Indian Ocean and largely absent from the South Pacific and South Atlantic Oceans (Miyashita, Kato & Kasuya, 1995). Plots interpolated from catches (Mikhalev, 2000; Best *et al.*, 2003) are revealing but ignore information from sightings, strandings, and acoustic detections. The best effort at drawing together data from different sources is that of Yochem & Leatherwood (1985), but their map did not include subsequent revelations of widespread illegal Soviet catches in the 1960s and 1970s (Yablokov, 1994; Mikhalev, 1997a; Yablokov *et al.*, 1998); it also interpolated between rare catches in some regions, and contained many question marks over the distribution of blue whales in other areas.

The classic theory of migration patterns for blue whales may also be in need of revision. It has long been assumed that Antarctic blue whales migrate to temperate mating and calving areas in the winter and then return to the Antarctic to feed in the summer. Early work by Mackintosh & Wheeler (1929) showed conclusively that the whales caught at South Georgia and at Saldanha Bay, South Africa, were morphologically similar, and that the timing of catches at the two locations was consistent with migration. Year-round voyages of the *Discovery II* showed a marked rise and fall of baleen whale numbers in the Antarctic also consistent with migration (Mackintosh, 1966). Finally, there is unequivocal evidence for this migration pattern in humpback whales and some indications of a similar migration in fin whales; thus it has been argued by analogy that the pattern holds also for blue whales (Mackintosh & Wheeler, 1929; Mackintosh, 1966).

More recent analyses of length frequencies (based on a database containing 82% of all catches between 1914 and 1973) have reinforced the conclusion that Antarctic blue whales migrate to South African and Namibian waters in winter (Best, 1998; Branch *et al.*, 2007). Additionally, acoustic recordings (from the 1990s onwards) have detected brief periods of Antarctic-type calls in the austral autumn and winter (peaking in July) in the eastern tropical Pacific, central Indian Ocean, off south-west Australia, and northern New Zealand (Stafford *et al.*, 2004; McDonald, 2006).

However, not all evidence supports the migration hypothesis: some Antarctic blue whales remain behind during the winter. At South Georgia, blue whales were present year-round (Hinton, 1915; Risting, 1928). There were also year-round acoustic detections of blue whales in the West Antarctic Peninsula (Širović *et al.*, 2004) and East Antarctic (McKay, Širović & Thiele, 2005), although these were greatly reduced in winter.

It is also well known that pygmy blue whales do not generally migrate to the Antarctic in summer. Pygmy blue whales in the northern Indian Ocean form a resident population (Yochem & Leatherwood, 1985; Mikhalev, 2000; Anderson, 2005), and the abundance of pygmy blue whales around Australia (Gill, 2002), south of Madagascar (Best *et al.*, 2003) and in the southern Indian Ocean (Zemsky & Sazhinov, 1982; Miyashita *et al.*, 1995; Mikhalev, 2000) peaks in the summer months. Blue whale catches and sightings in the south-east Pacific are also more common in summer than in winter (Clarke, Aguayo & Basulto, 1978; Huckle-Gaete *et al.*, 2003).

To provide updated maps of blue whale distribution, to address questions about the classical migration theory for blue whales, and to compare densities in different regions, we compiled available data for catches, sightings, strandings, acoustic recordings, and Discovery mark recoveries from a variety of published and unpublished sources. The resulting data were compared with maps of bathymetry, thermal fronts, and phytoplankton biomass to better understand their association with blue whale distribution. Finally, the whale data were examined for monthly patterns suggesting migration.

METHODS

The study area is defined to be the entire Southern Hemisphere in addition to the northern Indian Ocean, because this covers the known distribution of Antarctic and pygmy blue whales. In the eastern tropical Pacific, sightings between the equator and 5°N are also included because extensive surveys there (e.g. Reilly & Thayer, 1990) show that there is a gap (~3–7°N) between blue whale sightings near the Costa Rica Dome that are from the California/Mexico population (Mate, Lagerquist & Calambokidis, 1999), and those closer to the equator that probably come from the south-east Pacific population. Data were collected on bathymetry, thermal fronts, and phytoplankton biomass to relate these environmental factors to blue whale distribution. The study focused on positional information from catches, sightings, strandings, mark-recaptures (using Discovery marks), and acoustic detections, but did not include data from several satellite tagging and photo-identification studies since these had not yet been published. Positional data were separated into whaling (≤ 1973) and post-whaling (> 1973) eras to assess whether the occurrence and distribution of blue whales was affected by whaling.

Historical catches

Catch positions were provided by the International Whaling Commission (IWC) Secretariat and include an up-to-date account of catches by the USSR in the 1950s to 1970s, correcting for USSR misreporting and illegal whaling (Yablokov, 1994; Mikhalev, 1997a; Yablokov *et al.*, 1998). Catch positions were recorded to the nearest degree for many earlier catches, but to the nearest minute for later catches. The positions associated with land station catches were usually fixed and did not represent the actual catch positions, except in later years. Finally, the catch database does not have a fully comprehensive set of individual positions, especially for the early part of the 20th century and during World Wars I and II.

Nearly all whaling on blue whales was conducted in the Antarctic, providing little information on blue whale distribution outside this area. However, Soviet vessels travelled widely outside the Antarctic during the 1950s to 1973, catching whales without regard to closed seasons, closed areas and forbidden species. Revised data on their catches are available from 1958 to 1973. For this period of time, a proxy of Soviet effort was obtained by comparing the catches of blue whales with those of all whales for each 2×2° square.

Sightings

Sightings were obtained from a wide variety of published papers, technical reports and unpublished IWC Scientific Committee documents, in addition to unpublished data from the authors of this paper and other sources listed in the acknowledgements (Appendix 1). Potential sources were restricted to a manageable number by including only sources that listed blue whale sightings. Because effort associated with surveys with zero sightings was excluded, total estimated effort is negatively biased. Where the number of groups of whales was recorded, this may have referred to schools (stable groups of whales that usually travel together and are often related) or to feeding aggregations (unstable groups aggregating around an ephemeral food source). Where later papers referred to the same sightings obtained from another more primary source, the earlier source was preferred. Less effort was expended in collating sightings prior to 1973 while catches were still being taken. For example, no effort was made to extract data from logbooks of 19th century American whaling boats except for those collated by Wray & Martin (1983). Four particularly extensive datasets are described in more detail below.

IDCR/SOWER database

Antarctic surveys were conducted under the auspices of the IWC from 1978/79 to 2005/06, under the auspices of the International Decade of Cetacean Research (IDCR), and Southern Ocean Whale and Ecosystem Research (SOWER) programmes (Branch & Butterworth, 2001a; Matsuoka *et al.*, 2003). Sightings were obtained from the IWC's database DESS 3.42 (Database-Estimation Software System, Strindberg & Burt, 2004) for 1978/79–2004/05. Details from each survey can be obtained from the individual cruise reports (e.g. Ensor *et al.*, 1999, 2000, 2004). At the time of submission, sightings had not been encoded from the 2005/06 survey (33 groups, 63 whales) (Ensor *et al.*, 2006).

JARPA database

The Japanese Whale Research Program under Special Permit in the Antarctic (JARPA) has so far operated from 1989/90 to 2005/06. Blue whale abundance estimates have been calculated up to the 2004/05 season (Matsuoka *et al.*, 2006), and sightings from 1989/90 to 2004/05 are included in this paper. Effort was widespread south of 60°S and from 35°E eastwards to 145°W. Additional effort was recorded in much of the region north of 60°S during transits and during surveys between 57°S and 60°S.

JSV database

Japanese Scouting Vessels (JSV) recorded noon-day positions, total blue whales sighted on that day, and daily search effort from 1965/66 to 1988/89 (Miyashita, Shigemune & Kato, 1994; Miyashita *et al.*, 1995). However, from the 1978/79 season onwards, some of these vessels were also used in the IDCR/SOWER surveys, resulting in potential record duplication in the two databases. Since the IDCR/SOWER records contained more accurate positions these were preferred, reducing JSV records from 2,520 blue whales (recorded on 833 vessel-days) to 2,410 whales (799 vessel-days). JSV recorded the number of groups and number of whales in most years, but in some years the number of groups was not recorded.

SWFSC surveys in the eastern tropical Pacific

The Southwest Fisheries Science Center (SWFSC) of the U.S. National Marine Fisheries Service conducted a series of marine mammal surveys in the eastern tropical Pacific between 1986 and 2006 (e.g. Holt & Sexton, 1987; Hill, Rasmussen & Gerrodette, 1991; Mangels & Gerrodette, 1994; Kinzey *et al.*, 2001; Jackson *et al.*, 2004). The surveys extended eastwards from Hawaii to California and Mexico and southwards to about 15°S. Previous blue whale sightings around the Costa Rica Dome (Wade & Friedrichsen, 1979; Reilly & Thayer, 1990) have been linked through satellite tagging to the Mexico/California population of northern blue whales, *B. m. musculus* (Mate *et al.*, 1999). For this reason, only the effort and sightings south of 5°N were included in this study, as these sightings were considered more likely to be from the south-east Pacific grouping of blue whales.

Effort assessment

Where reported, the effort associated with each survey was recorded. Where multiple surveys were conducted in a study the total effort for all surveys was reported even if blue whales were not sighted on many individual surveys. However, the

effort associated with a very large number of studies that reported zero blue whale sightings was excluded. Effort was reported in a variety of ways: days, hours, kilometers or nautical miles. The total effort was estimated by assuming that 10 hours of effort equaled one day and by converting measurements from nautical miles to kilometers. For sighting rate, where the number of groups was not consistently recorded (e.g. JSV), the number of whales was converted to number of groups using the mean group size from all other records.

Strandings

“Strandings” included both live strandings and washed up and floating carcasses. Sources (listed in Appendix 2) included published and unpublished reports, and relied heavily upon previous collations of sightings, e.g. James & Soundararajan (1979), De Silva (1987) and Sathasivam (2000). Identification was usually clear, as evidenced by a published description by a cetacean expert, a maximum length exceeding that of other species in the region, completely black baleen plates or other diagnostic features. Reports identified as *B. indica* (originating from Blyth, 1859) (the Great Indian Fin Whale or Great Indian Rorqual) were considered to be a synonym for *B. musculus* (Rice, 1998). Although care was taken to include only strandings verified to be blue whales, in many cases, particularly in the northern Indian Ocean, the published descriptions did not provide full details of how the species identification was made. Original records of older strandings could not always be obtained as they were often published in obscure and inaccessible journals. In such cases the closest summary in time was used and the oldest known reference noted. The reliability of length measurements varies. Older records probably recorded maximum total length which is appreciably longer than the accepted standard catch measurement from the “tip of the snout to the notch of the tail flukes” (Mackintosh & Wheeler, 1929), thus older measurements are probably biased high. In the majority of cases, the name of the stranding location was given but not the exact latitude and longitude. In these cases the place was located using Google Earth software (www.earth.google.com) to find the most accurate position. This was particularly difficult for Indian place names where variant spelling and name changes were common.

Mark-recaptures and movements

The only source of mark-recapture data included in this paper are Discovery marks, but a brief outline of known work on photo-identification and satellite tags is summarized at the end of this section.

Mark and recapture data from the Discovery marking program and the International Marking Scheme were obtained from the IWC Secretariat and are listed in Appendix 3. Marks consisted of a metal tube stamped with a unique serial number that was fired into the muscle of the whales, and recovered during whaling (Brown, 1954, 1962). The mark-recaptures included three (#25601, #25608, #25619) from Soviet expeditions (Mikhalev & Tormosov, 1997) not currently in the IWC database, and excluded German mark G00706 which had a missing recapture location. There is some doubt about the mark positions and species identity (fin or blue whale) of Soviet marks #1294 and #1298 reported in Ivashin (1971), thus these were excluded. There were nine instances where two marks were recaptured from a single whale. In each instance both marks had been placed on the same day and almost identical location, thus the numerically higher mark was excluded from analyses of the Discovery marks.

Photo-identification studies include those from Sri Lanka (Alling, Dorsey & Gordon, 1991), and studies in progress in Perth Canyon in Western Australia (K.C.S. Jenner, M-N.M. Jenner & V.J. Sturrock unpublished data), Bonney Upwelling, southern Australia (P.C. Gill and M.G. Morrice, unpublished data), Geographe Bay, Western Australia (C. Burton, unpublished data), Chile (Hucke-Gaete, Viddi & Bello, 2005; Cabrera *et al.*, 2006), Indonesia (B. Kahn, unpublished data) and the Southern Ocean (P. Olson, pers. comm.).

Satellite tagging has been conducted around Australia (N. Gales, K.C.S. Jenner and P.C. Gill, unpublished data), Indonesia (Kahn, 2005) and Chile (Hucke-Gaete *et al.*, 2005).

Acoustic detections

Acoustic recordings of Southern Hemisphere blue whales were obtained from a variety of sources based on bottom-moored or sound channel-moored hydrophones, dipping hydrophones and sonobuoys (Appendix 4). Sonobuoys record data over relatively short time frames (hours), whereas moored hydrophones are capable of collecting year-round datasets. Sonobuoys were deployed during seven SOWER cruises (1996–2006) both in the Antarctic and in pygmy blue whale habitat during the austral summer. The distance at which calls can be detected depends on many factors including bottom topography type, ambient noise levels, instrument type, and depth of the vocalizing whale and receiver. Since these factors were seldom recorded in our sources, it is generally not possible to estimate how far away the calling whales were. Širović (2006) does estimate that Antarctic-type calls from the Antarctic Peninsula were detected up to 200 km away from bottom-mounted instruments in October and November, but we believe the distance to be much less for most of the other studies cited.

Reliability of data

The catch database covers 83.6% of known catches of blue whales in the study area. Similarly the set of mark-recaptures examined is comprehensive and differs little from previous extensive analyses (Rayner, 1940; Brown, 1954, 1962). Strandings are more commonly reported from areas of high human population density and where there are cetacean experts, which explains why strandings were reported in such high numbers from India, Sri Lanka, Australia, New Zealand, and Chile. The absence of any strandings around Africa, despite high catches from the south-west coast, is at least partly due to low monitoring effort. The sightings data were often from surveys in restricted areas, except for major efforts like JSV, JARPA and IDCR/SOWER. Many areas were never surveyed while other areas were intensively studied. Since sighting effort was not included from publications recording zero blue whales, the study-wide sighting rate estimate will be biased high. Finally, sighting rates are obviously difficult to compare from one study to another because the sighting platform, number of observers, vessel speed, sighting conditions and many other factors vary. Nevertheless, blue whales produce highly visible and relatively frequent blows so that we assumed that sighting rates varying by an order of magnitude or more would reflect real differences in densities. Acoustic data provide reliable presence-absence information but were often obtained incidental to other studies and did not include concurrent visual sightings of blue whales. Although relative densities can be inferred from the number of calls recorded, it is unknown what proportion of blue whales produces calls and therefore acoustic data cannot be used to estimate the number of individuals in range of the acoustic instrument.

Bathymetry, thermal fronts and phytoplankton chlorophyll-*a* concentrations

To better understand the possible environmental correlates of blue whale distribution, large-scale positions of bathymetry, thermal fronts and phytoplankton biomass were obtained from digital sources. Bathymetry for the study area was obtained from version 8.2 (November 2000) of the dataset described in Smith & Sandwell (1997), and was downloaded from the website of the Institute of Geophysics and Planetary Physics, Scripps Institution of Oceanography (<http://topex.ucsc.edu/>). These data come from a combination of depth soundings and satellite gravity measurements and have a nominal resolution of about 4 km.

Following the representation of Moore & Abbott (2000), we obtained the mean annual position of the major fronts in the Southern Ocean. These include, from north to south: the North Subtropical Front, the Agulhas Current Front, the South Subtropical Front, the Subantarctic Front and the Southern Antarctic Circumpolar Current Front, and the Antarctic Polar Front. For the more northern regions, we considered the annual mean location of the Costa Rica Dome in the eastern tropical Pacific (~9°N 90°W), as outlined by the 20°C isotherm depth at 35 m (Fiedler, 2002), and the location of the 25°C isotherm at the surface, which marks the position of the seasonal Equatorial Front in the eastern equatorial Pacific and eastern equatorial Atlantic. The surface manifestation of the 25°C isotherm also describes the extent of south-west monsoon-induced upwelling in the western Indian Ocean. The mean position of the 25°C isotherm was obtained from a satellite-derived sea-surface temperature climatology for the month of August from NOAA's National Oceanographic Data Center (<http://www.nodc.noaa.gov/sog/pathfinder4km/>) (sensor: AVHRR, grid resolution: 4 km, base period: 1985–2001; see Casey & Cornillon (1999) for details of an earlier version of this product).

Long-term annual and seasonal mean phytoplankton chlorophyll-*a* concentrations, a proxy for biomass, were obtained in $\text{mg}\cdot\text{m}^{-3}$ from satellite measurements (sensor: SeaWiFS, grid resolution: 9 km, base period: 4 September 1997 to 30 September 2006; <http://oceancolor.gsfc.nasa.gov/>). One caveat is that these measurements are from surface waters and may not reflect phytoplankton biomass in deeper waters.

RESULTS

Catches

The IWC catch database includes catch positions for 303,329 blue whales (and individual data for 311,948 whales in all) in the study area, i.e. 83.6% of the estimated 362,879 blue whales caught in this region (Branch *et al.*, 2004). Figure 1 shows the distribution of the catch and the major environmental features of the study area, although treatment of the association between latter and blue whale distribution is left for the Discussion section. Catches covered the Antarctic densely. The major concentrations of catches in the Antarctic shifted southwards from October–December to January–March (Figure 2). In the South Pacific, there were widespread catches along the west coast of South America north of 44°S off Chile, Peru and Ecuador and from Peru to the Galapagos Islands, but no other catches north of 59°S in the waters stretching west to 180°. In the South Atlantic, there were isolated catches off Argentina, Uruguay and Brazil. However, the identification of one of the two Brazilian catches is questionable given that it was recorded as either a “bowhead or blue” whale, neither of which is very likely. There were substantial catches off Angola, Namibia and the west coast of South Africa and a single catch off Congo. Catches were common off Durban (South Africa), from south of Madagascar to Australia, around the south and west coasts of mainland Australia and Tasmania, in the north-western Indian Ocean, and north-west of New Zealand. Pelagic catches in the Indian Ocean were limited to the 1959/60–1963/64 Japanese expeditions and 1962/63–1972/73 USSR expeditions capitalizing on the discovery of pygmy blue whales (Ichihara, 1961).

The pattern of Soviet catches (1958–1973) of all large cetacean species is revealing (Figure 3). In some areas, Soviet blue whale catches were very scarce despite considerable catches of other large cetaceans, particularly in the South Atlantic, central Indian Ocean, south of South America, and in the Tasman Sea.

Sightings

The sightings database included 4,383 records comprising at least 8,058 individual whales (Appendix 1), of which 3,691 records of at least 6,019 whales were recorded after 1973. Sightings largely mirrored the catch distribution, except for scattered sightings in the South Pacific and South Atlantic, broad areas south and south-west of Australia, in Indonesia and north of New Zealand to the equator (Figure 4). In the Antarctic, all sightings were clustered close to the continent in a much more restricted range than the catches. Where individual group sizes were recorded ($n = 3,346$; mean = 1.56; SE = 0.026; range = 1–60), the great majority comprised one (65.2%) or two whales (24.6%), and groups exceeding five whales were rare (1.1%) (Table 1). The total estimated effort where recorded was ~14,676 days (624 groups) plus ~7,480,450 km (3,365 groups). Overall sighting rates were therefore approximately 0.04 per day or 0.45 per 1,000 km (one group every 2,200 km), but are obviously biased upwards because most studies focused on high-density blue whale areas and many studies that reported no blue whales were excluded. For large-scale surveys with dedicated cetacean effort and good sighting platforms, sighting rates varied by more than four orders of magnitude from region to region. When ordered, these sighting rates (groups per 1,000 km) are as follows: off Costinha, Brazil, 0.003 (da Rocha, 1983); off Durban, South Africa, 0.005 from spotter planes (P.B. Best, unpublished data); around Somalia, 0.19 (Small & Small, 1991); around the Galapagos Islands, 0.25 (Palacios, 1999a); Oman, 0.32 (Oman Whale and Dolphin Group, unpublished data); Antarctica south of 55°S, 0.17 (JSV), 0.34 (JARPA, Matsuoka *et al.*, 2006) and 0.52 (IDCR/SOWER); South Georgia, 0.44 (Moore *et al.*, 1999); in the eastern tropical Pacific, 0.45 (SWFSC surveys); off Peru, 0.73 (Donovan, 1984a) and 0.97 (Valdivia *et al.*, 1983; Ramirez, 1985); around Komodo and Solor-Alor, Indonesia, 2.0 (Kahn, 2000, 2002, 2005; B. Kahn, unpublished data); Maldives, 2.4 (Ballance *et al.*, 2001); southern Indian Ocean 35–50°S 30–100°E, 2.9 (JSV); east Sri Lanka, ~6 assuming vessel speed of 5 knots (Alling *et al.*, 1991) and north-west Sri Lanka, 1.6 (A.D. Ilangakoon, unpublished data); off southern Australia, 7.4 (Gill, 2002, P.C. Gill & M.G. Morrice, unpublished data); off western Australia, 18.5 (K.C.S. Jenner *et al.*, unpublished data) and 18.6 (J.L. Bannister & C.L.K. Burton, unpublished data); on the Madagascar Plateau, 36.0 (Best *et al.*, 2003); and off Chile, 4.9 from a ship survey (Findlay *et al.*, 1998) and 52.4 from aerial surveys north-west of Chiloé Island (Galletti Vernazzani, Carlson & Cabrera, 2005; Galletti Vernazzani *et al.*, 2006).

Nearly all of the sightings on the IDCR/SOWER surveys were near the southern boundary of the survey region (from the pack ice to 60°S) despite substantial effort throughout the survey region (Figure 5). Furthermore, during transits to the Antarctic, sightings were recorded only in the southern Indian Ocean, and never during transits south of South Africa, South America, Tasmania, or New Zealand despite substantial search effort.

The JSV database included 4,827,370 km of search effort throughout the study region (Figure 6), but sightings per 1,000 km varied dramatically from region to region. The highest sighting rates were recorded between 40°S and 55°S in the southern Indian Ocean and south of Australia. Dramatically lower sighting rates were recorded in the South Atlantic, central Indian Ocean, Tasman Sea and southern Pacific Ocean. In the Antarctic, blue whales were generally recorded only in a few of the most southern 2°×2° squares.

Sightings from the SWFSC surveys in the eastern tropical Pacific were grouped into those off Mexico, those on or near the Costa Rica Dome, and those near to or south of the Equator (Figure 7). Only sightings from the last grouping were analysed further in this paper.

Strandings

We found records of 103 strandings in the study area (Appendix 2). Most of the strandings were reported from the south-east Pacific, in the northern Indian Ocean (Pakistan, India, Sri Lanka, Bangladesh, the Maldives), on the south and south-west coasts of Australia, and in north-west New Zealand (Figure 4). Isolated strandings were also reported from Uruguay, New Caledonia, northern Australia and Indonesia, but none were reported from any African country. All strandings were of solitary individuals, although a notable stranding on 23 January 1946 in Trincomalee Harbour, Sri Lanka, was of a pregnant female that gave birth in the harbour the following day and was then towed to safety (Deraniyagala, 1948). Reported lengths ranged from 6 m to 29.3 m but most blue whales measured in recent times (after 1927) were shorter than the maximum pygmy blue whale length of 24.1 m (Ichihara, 1966), except for a 27.4 m whale reported at Orewa, New Zealand in 1978 (A.N. Baker unpublished data). In addition, bones from a 24.0 m blue whale stranded near Busselton, Western Australia, in 1898 reveal that it was a physically immature Antarctic blue whale (Bannister, Burton & Hedley, 2005), and the skeleton still exists of a properly measured 26.5 m blue whale stranding on 8 February 1908 north of Okarito, New Zealand (Waite, 1912; Stollman *et al.*, 2005).

Mark-recaptures

There were 104 Discovery marks recovered from 95 individual whales (Appendix 3) and an additional 2,191 Discovery marks that were not recovered (Figure 8). Some blue whales were caught far from the mark position, but there was no

obvious increase in the distance between marks and recoveries with increased time except that recoveries in the same season were usually closer to the mark position than recoveries after one season or more (Figures 8–9).

Most marked blue whales ($n = 54$) were caught in the same season, but 15 were caught more than two seasons later and one evaded capture for 13 years 10 months and 12 days. With one exception, mark-recapture pairs were all south of $53^{\circ}55'S$ and between October and March and can be presumed to be Antarctic blue whales. The single exception was a blue whale marked at $56^{\circ}15'S$ $49^{\circ}03'E$ on 1 December 1962 that was identified as a pygmy blue whale when caught at $43^{\circ}55'S$ $50^{\circ}02'E$ on 4 April 1963 (Ichihara, 1966).

Acoustics

Acoustic recordings were distributed widely around the Antarctic, around the Indian Ocean, off northern New Zealand, and in the south-east Pacific (Figure 4). The earliest Southern Hemisphere acoustic recordings in the presence of blue whales were off Chile in 1970 (Cummings & Thompson, 1971). They described long (10–30 seconds), low-frequency (10–40 Hertz), multi-unit sounds; all subsequent recordings of blue whales share these characteristics, but are also geographically distinct both within and between ocean basins. Distinct call types have been described in the literature associated with the following regions: the Antarctic, south-east Pacific, Madagascar, Australia, Sri Lanka and off northern New Zealand (e.g. Stafford, Nieukirk & Fox, 1999; McCauley *et al.*, 2001; Stafford *et al.*, 2004; McDonald, 2006; reviewed by McDonald *et al.*, 2006).

In all Antarctic regions a unique call type sometimes referred to as the “28-Hz pulse” or “28-Hz tone” has been recorded together with the low-frequency downsweeps common to blue whales worldwide (Figure 4) (Ljungblad, Clark & Shimada, 1998; Stafford *et al.*, 1999; Clark & Fowler, 2001; Širović *et al.*, 2004; Stafford *et al.*, 2004; McKay *et al.*, 2005; Rankin *et al.*, 2005; Ensor *et al.*, 2006). This 28-Hz tone is now considered diagnostic of the Antarctic subspecies (Rankin *et al.* 2005) and has been recorded from sonobuoys on SOWER cruises (December–February) coincident with blue whale sightings or at night when blue whales had been seen during the day (Ljungblad *et al.*, 1998; Clark & Fowler, 2001; Rankin *et al.*, 2005; Ensor *et al.*, 2006). Short recordings of Antarctic-type calls were also recorded 4–6 April 2004 near South Georgia (C.W. Clark & A.R. Martin, pers. comm.) which represents the furthest north they have been recorded in the Atlantic Ocean.

The seasonal occurrence of Antarctic blue whale calls can be obtained from moored instruments. Distinctive 28-Hz tones were recorded on instruments moored to the west and north of the Antarctic Peninsula in all months with strong seasonal peaks in February–May and October–November, and low numbers of calls during June–August during high ice concentration cover (Širović *et al.*, 2004). These 28-Hz tones were also recorded year-round from an instrument moored at $66^{\circ}44'S$ $69^{\circ}48'E$ with peaks in April–June, October–November and a dearth of calls in December–March, although this analysis is preliminary (McKay *et al.*, 2005). Additionally, there are limited records of 28-Hz tones in mid and low latitudes during May to September in the Pacific and Indian Oceans, suggesting that at least some Antarctic blue whales migrate northwards in winter (McCauley *et al.*, 2004; Stafford *et al.*, 2004; McDonald, 2006). In the eastern tropical Pacific, these calls were recorded in low numbers from May to September, with peak number of calls in July at $8^{\circ}S$ $95^{\circ}W$ and $8^{\circ}S$ $110^{\circ}W$ (Stafford *et al.*, 1999). Near northern New Zealand ($36^{\circ}22'S$ $175^{\circ}54'E$), 28-Hz tones were recorded in May to July (McDonald, 2006). Off south-western Australia ($\sim 34^{\circ}54'S$ $114^{\circ}06'W$) they were recorded from May to November (peak in July) (McCauley *et al.*, 2004; Stafford *et al.*, 2005), and near Diego Garcia ($\sim 7^{\circ}S$ $72^{\circ}E$) from May–August 2002 (peak in July) (Stafford *et al.*, 2004). Finally, 28-Hz tones were recorded near Crozet Island at $46^{\circ}10'S$ $51^{\circ}48'E$ but no seasonal information was provided (Samaran *et al.*, 2006).

None of the other five blue whale call types have been recorded in the Antarctic south of $60^{\circ}S$. These other call types have usually been labelled as “pygmy” blue whales and differ according to ocean basin. Three distinct call types have been recorded from the Indian Ocean (Alling *et al.*, 1991; Ljungblad *et al.*, 1998; McCauley *et al.*, 2001), one from the south-east Pacific (Cummings & Thompson, 1971; Stafford *et al.*, 1999), and one likely pygmy blue whale call type from the south-west Pacific (Kibblewhite, Denham & Barnes, 1967; McDonald, 2006; McDonald *et al.*, 2006), but no pygmy-type call has yet been recorded from the Atlantic Ocean.

The first of the three distinct Indian Ocean call types (Stafford *et al.*, 2005) was recorded in the presence of blue whales off north-east Sri Lanka in February–April 1984 (Alling *et al.*, 1991), and has since been recorded on bottom-mounted instruments near Diego Garcia in all months except February–April and July (Stafford *et al.*, 2005). The second call type was recorded in late December 1996 on the Madagascar Plateau in the presence of nominal pygmy blue whales (Ljungblad *et al.*, 1998). It has also been recorded at Diego Garcia in May–July (Stafford *et al.*, 2005) and off Crozet Island (Samaran *et al.*, 2006). The third call type, first described by McCauley *et al.* (2001) from moored hydrophones, has been recorded in south-western Australian waters during November–June (McCauley *et al.*, 2004; Stafford *et al.*, 2005), along the West Australian coast off Exmouth ($21^{\circ}S$) in June–July and November–December (R.D. McCauley, unpublished data) and along southern Australia from Bass Strait westwards to south-western Australia (R.D. McCauley, unpublished data).

The south-east Pacific blue whale call type was first recorded on 30–31 May 1970 at $43^{\circ}36'S$ $74^{\circ}40'W$ off Chile (Cummings & Thompson, 1971), and has been recorded year-round on a hydrophone array in the eastern tropical Pacific, primarily at $8^{\circ}S$ $95^{\circ}W$, with peak calling from March–September (Stafford *et al.*, 1999). These calls were also recorded off

Peru at 6°54'S 80°50'W in November 2000 (T. Norris, unpublished data). In addition to this “normal” call type, a different call type was recorded during biopsy approaches off Chile during the 1997–1998 IWC survey, apparently in reaction to the rapid approach of the survey vessel (Ljungblad & Clark, 1998).

The northern New Zealand call type consists of a single instance of these calls in the 1960s (Kibblewhite *et al.*, 1967) together with four records in 1997 (McDonald, 2006).

Combined distribution from all sources

Where blue whales were present, this was often confirmed by multiple sources (Figure 10). For example, although there were only rare detections of blue whales off northern New Zealand, these records included catches, sightings, strandings and acoustic detections.

Monthly distribution

Most positional data were recorded during the austral summer season between October and April (Figure 11). During summer, records were nearly circumpolar especially between November and March. The Antarctic region between 160°W and 70°W was hardly exploited before World War II, and was proclaimed a sanctuary from 1938/39 to 1954/55, after which catches were legal between January and March only, explaining the near-absence of catches in this region outside those months. During these summer months blue whales were commonly recorded in temperate latitudes off the west coast of South America, in the northern Indian Ocean, in the Subantarctic, around southern Australia, and in north-west New Zealand, but were largely absent from African waters. In winter months (April–September) high catches were reported off south-west Africa (especially Saldanha Bay), and Durban (Figure 12). In these months, sightings and strandings continued in other areas. It is also notable that catches were reported in every month of the year at South Georgia, although numbers (and catch effort) decreased greatly in the winter months.

DISCUSSION

The dataset assembled here allows for an updated examination of blue whale distribution and its association with environmental factors, migration patterns, and the relative status of different populations of blue whales in the study area.

Distribution

Blue whales feed on euphausiids and other crustacean meso-zooplankton (e.g., Mackintosh & Wheeler, 1929; Yochem & Leatherwood, 1985). To maintain their great energetic demands they search out the densest patches of their prey (Croll *et al.*, 2005). It has previously been accepted that blue whales in the study area (particularly Antarctic blue whales) feed in the austral summer but fast during the winter breeding season (e.g., Mackintosh & Wheeler, 1929; Mackintosh, 1966). However, as detailed below, we found that their distribution year-round is linked to areas with known or inferred high densities of euphausiids, suggesting that their winter distribution also may be influenced by feeding opportunities (cf. Reilly & Thayer, 1990; Croll *et al.*, 2005).

Blue whale distribution in the study area is strongly linked to latitude. Close to the Antarctic, blue whales were recorded along bands stretching across entire ocean basins, but at lower latitudes they are progressively more clustered, localized, and compressed along the continental margins (Figure 10). This pattern probably reflects euphausiid biogeography, with large Antarctic krill (*Euphausia superba*) at the highest latitudes, mid-sized *Euphausia* species in the mid latitudes, and smaller *Nyctiphanes* species in coastal upwelling systems in the mid and low latitudes (see maps in Brinton *et al.*, 2000). However, until better region-wide data become available, we must rely on environmental proxies for euphausiid aggregation such as bathymetry, frontal processes, and phytoplankton biomass (Atkinson *et al.*, 2004; Siegel, 2005).

Patterns of blue whale distribution in relation to environmental features are best summarized in Figures 1 and 10. At this scale, blue whales generally occurred in regions with high phytoplankton densities such as the productive Antarctic and Subantarctic waters, and in the upwelling systems of the Arabian Sea and the west coasts of South America and Africa. A major exception to this pattern is in the 35–45°S band between South America and Africa, and extending into the Agulhas Retroflexion south of Africa, where few blue whales were reported despite high chlorophyll-*a* concentrations. Conversely, annual mean chlorophyll-*a* levels were intermediate to low south of Madagascar and around Australia, where blue whale sightings were numerous. These areas, however, undergo seasonal blooming (Figure 2), and are thus under-represented in the annual mean. Blue whales were virtually absent year-round from the mid-latitude central gyres with lowest chlorophyll-*a* concentrations.

Blue whales were generally associated with waters deeper than the continental shelves. Shallow-water records were typically from regions with narrow continental shelves, but blue whales were virtually absent on the wide continental shelves off south-east Argentina, northern Australia and south-east New Zealand. In the Antarctic they were most common on deep continental slopes (Kasamatsu, Matsuoka & Hakamada, 2000). Frequent sightings and strandings have been reported from Trincomalee Harbour, Sri Lanka, in waters shallower than 200 m, but deeper water (> 500 m) is found near to this harbour (Alling *et al.*, 1991). Blue whales also move through waters less than 50 m depth in Geographe Bay, Australia (C. Burton, unpublished data), around Chiloé Island, Chile (Hucke-Gaete *et al.*, 2003), and in the Bonney

Upwelling of south-east Australia, where the mean depth of 920 sightings was 93 m (P. Gill & M. Morrice, unpublished data).

Blue whale occurrence matched large-scale fronts closely in some regions, but not in others. Frontal regions define water masses with distinct physical properties and production regimes, which influence euphausiid biogeography (e.g., Longhurst, 1998). In addition, enhanced frontal dynamics, such as interaction with bathymetric features, cross-frontal exchange, splitting and merging, meandering, and eddy shedding, often result in front-associated phytoplankton blooms (Moore & Abbott, 2000; 2002). Antarctic catches were bounded to the north by the Antarctic Polar Front, and pygmy blue whale distribution in the Subantarctic was fairly well bounded by the Subantarctic Front and the North and South Subtropical Fronts (Figure 1). Off the west coasts of South America and Africa, distribution extended from upwelling regions to the Equatorial Front. Blue whales south of Madagascar may be supported by biological enrichment from the interaction of the North Subtropical Front with the steep bathymetry of the Madagascar Plateau; interactions of this front with the Broken Plateau may similarly support aggregations west of Australia. However, there were no links with any fronts for concentrations of blue whales in the northern Indian Ocean, coastal Australia, and around New Zealand.

The above discussion examined large-scale patterns of blue whale distribution in the study area. There are also regional particularities that deserve additional consideration. We therefore focus in more depth on ten regions of special interest.

Antarctic

It can safely be assumed from a variety of sources that nearly all blue whales in the Antarctic are from the Antarctic (true) subspecies. First, based on the lengths of sexually mature females, nearly all (99.2%) catches taken south of 52°S were Antarctic blue whales (Branch *et al.*, 2007). Second, genetic evidence shows a significant separation between samples taken south of 60°S (Antarctic blue whales) and samples from the Indian Ocean (pygmy blue whales) (Conway, 2005; LeDuc *et al.*, in press). Third, acoustic data south of 60°S from SOWER cruises (austral summer) and moored instruments (year-round) have consistently recorded the distinctive Antarctic-type 28-Hz tones (Ljungblad *et al.*, 1998; Clark & Fowler, 2001; Širović *et al.*, 2004; Stafford *et al.*, 2004; McKay *et al.*, 2005; Rankin *et al.*, 2005; Ensor *et al.*, 2006). To date, none of the other blue whale call types have been recorded south of 60°S.

Antarctic blue whales have a continuous circumpolar distribution, although catches were lower between 70°W and 160°W. Prior to 1938/39 little whaling was conducted in 70–160°W, presumably because there were few blue whales there. From 1938/39 to 1954/55 this region was proclaimed a sanctuary, thus the majority of whaling in this region was conducted after 1954/55. The continuous circumpolar distribution of Antarctic blue whales is reinforced by recoveries of Discovery marks showing that they sometimes disperse over time widely around the Antarctic, as noted by previous authors (Brown, 1954, 1962). While they may show some fidelity to particular IWC Management Areas (the IWC divides the Antarctic into six roughly equal Areas for management purposes), they also cross the borders between Management Areas and have been caught on several occasions more than 100 degrees of longitude from their marking position. Circumpolar-wide acoustic records of 28-Hz tones further support their continuous distribution (Ljungblad *et al.*, 1998; Clark & Fowler, 2001; Širović *et al.*, 2004; Stafford *et al.*, 2004; McKay *et al.*, 2005; Rankin *et al.*, 2005; Ensor *et al.*, 2006).

Nearly all blue whale catches in the Antarctic were between October and April (Figures 2 and 12). While Tynan (1998) found that highest krill densities and highest whale catches are aligned with the Southern Boundary of the Antarctic Circumpolar Current (not shown here), we found that the Antarctic Polar Front was a more useful indicator of the northern boundary of the Antarctic catches. Where the Antarctic Polar Front was farther south (70–130°W), the catches were more southerly, and where it was further north (50°W–60°E), catches were more northerly. Antarctic krill presence is not associated with any one oceanographic feature, but is determined by the presence of abundant phytoplankton near ice edges, continental shelves, and dynamic frontal regions (Atkinson *et al.*, 2004; Siegel, 2005).

It is striking that recent Antarctic sightings are in a much narrower ring close to the pack ice and the continental shelves (Figures 4 and 5), while most catches were further north. In part this may be explained by greater sighting effort (from the IDCR/SOWER surveys) south of 60°S. Additionally, the Antarctic pack ice has retreated since the 1960s (de la Mare, 1997; Cotté & Guinet, 2007), although this conclusion is disputed by Ackley *et al.* (2003). As an alternative, their narrower present-day distribution may be explained by the “basin model” of MacCall (1990): at higher densities the Antarctic blue whales may have occupied a wider habitat range, but now that they are depleted to <1% of their original abundance (Branch *et al.*, 2004) they are more concentrated close to the ice edge where krill is most abundant.

Central ocean basins

Blue whales are largely absent from the central portions of each of the major ocean basins in the study area, which are notable biological deserts, as evidenced by the very low chlorophyll-*a* concentrations in these regions (Figure 1; McClain, Signorini & Christian, 2004).

In the central South Pacific, two Soviet cruises in 1973/74 and 1974/75 found no blue whales between 40–60°S (Mikhaley, 1978), and the JSV database also recorded no sightings in the South Pacific (20–50°S 90–150°W) despite 42,335 km of search effort.

Few blue whales were recorded from the central South Atlantic. Large-scale studies based on ship reports reinforce this conclusion (Brown, 1958; Slijper, van Utrecht & Naaktegeboren, 1964): sightings of rorquals (not identified to species) were nearly absent in the central region while higher sighting rates were recorded close to the African coast and in the 30–40°S latitude strip. However, these high rorqual sighting rates in 30–40°S probably did not include any blue whales, given that in the JSV database only three blue whales were sighted in 35–50°S, 10°E–65°W during 352,554 km of effort (0.005 groups per 1,000 km assuming mean group size of 1.56). Furthermore, few Soviet catches were taken in this band despite large catches of other cetacean species (Yablokov *et al.*, 1998).

In the south-central Indian Ocean, blue whale records were completely absent although numerous sightings and catches were recorded along the Australian coast, in the northern Indian Ocean, and south of about 35°S. Rorqual sightings from large-scale ship studies matched the patterns observed in this paper: low sighting rates in the central Indian Ocean contrasted with high sighting rates on the oceanic periphery (Brown, 1957; Slijper *et al.*, 1964). Soviet catch data show a similar pattern (Mikhalev, 2000), including zero blue whale catches in the central Indian Ocean despite some catches of other species there (Yablokov *et al.*, 1998).

South-west Atlantic (Brazil, Uruguay and Argentina)

The lowest sighting rate in the study area was from Costinha, Brazil where only three sightings were recorded during 46,273 hours of effort (da Rocha, 1983), to add to two Brazilian catches (one of which was originally recorded as being either a bowhead or a blue, and whose identity is thus questionable) and one stranding (Dalla Rosa & Secchi, 1997). A thorough review concluded that blue whales are nearly absent from Brazil (Zerbini *et al.*, 1997). Isolated strandings were reported from Uruguay (Praderi, 1985) and Argentina (Burmeister, 1871, 1872), and in October 1993 the jawbones from a long-forgotten blue whale stranding were discovered in central Patagonia (Reyes, 2006). Most likely these few blue whales off eastern South America are Antarctic blue whales, although the Brazilian stranding could not be assigned unambiguously to either the Antarctic or pygmy subspecies (Dalla Rosa & Secchi, 1997). It is a mystery why there are so few blue whale records from this region despite intensive whaling and sighting effort (Figures 3 and 6; da Rocha, 1983), especially given its extensive use by other large cetaceans (Zerbini *et al.*, 1997; Croxall & Wood, 2002; Reyes, 2006) and areas of high chlorophyll-*a* concentrations (Figure 1b; Romero *et al.*, 2006). However, it is worth noting that the high chlorophyll-*a* concentrations are over the broad continental shelf (Figure 1a), which is probably shallower than the depths preferred by blue whales.

South-western Africa

Large catches were recorded from Saldanha Bay (South Africa) ($n = 7,969$), Namibia ($n = 1,665$), Angola ($n = 1,917$) and Congo ($n = 1$). Saldanha Bay in particular was known to be a place frequented by a high percentage of immature blue whales in addition to some very large females (Mackintosh & Wheeler, 1929; Mackintosh, 1942). These catches occurred throughout the highly productive upwelling system of the Benguela Current (Carr & Kearns, 2003). Despite large historical catches, only two sightings of blue whales have been recorded from the entire west coast of Africa since 1973, suggesting that these blue whales were nearly extirpated by whaling. Recently, no sightings were recorded in 3,644 hr of survey effort between March 2004 and September 2005 off central and northern Angola in deep waters (C. Weir, pers. comm.). No strandings have ever been reported from this coast, perhaps because it is sparsely inhabited. These blue whales are most likely to be Antarctic blue whales because (1) Antarctic blue whales were severely depleted by whaling (Branch & Butterworth, 2001b; Branch *et al.*, 2004), (2) an estimated >90% of sexually mature females caught were Antarctic blue whales (Branch *et al.*, accepted), and (3) a detailed study found that they were morphologically similar to Antarctic blue whales caught at South Georgia (Mackintosh & Wheeler, 1929).

South-eastern Africa

Catches with positional data in this region were recorded only at Durban, South Africa, and consisted of a mixture of immature and adult blue whales. In total, 2,986 blue whales were caught off Durban. Additional catches (positions not available) were taken in south-east South Africa ($n = 417$) and Mozambique ($n = 14$) during 1911–1916. Evidence from a variety of sources suggests that most catches here were originally Antarctic blue whales but by the end of the whaling period most catches and sightings were probably pygmy blue whales (Branch *et al.*, accepted). This is not surprising given the close proximity to known pygmy blue whale grounds south of Madagascar (Best *et al.*, 2003), and a pygmy blue whale reported caught at Durban (Gambell, 1964). Sightings during 1968–1975 were rare and concentrated in March–May, while earlier catches peaked in May–July (Bannister & Gambell, 1965).

Madagascar and Subantarctic (southern Indian Ocean)

This region of numerous sightings and catches is known to be primary pygmy blue whale habitat in the summer. One of the highest sighting rates recorded was on the Madagascar Plateau: 36 groups per 1,000 km (Best *et al.*, 2003), while 1,607 whales were recorded in the JSV database in the Subantarctic (2.9 groups per 1,000 km in 35–50°S 30–100°E). These sighting rates are 500 times greater than in the South Atlantic and South Pacific and an order of magnitude greater than in the Antarctic. Calls recorded here in the presence of pygmy blue whales are distinctive (Ljungblad *et al.*, 1998) and have also been recorded north-east of Madagascar near Diego Garcia (Stafford *et al.*, 2005) and in the Subantarctic near Crozet

Island (Samaran *et al.*, 2006). South of Madagascar, localized wind-driven upwelling occurs in winter (Ho, Zheng & Kuo, 2004), and the East Madagascar Current regularly sheds energetic eddies that feed into the Agulhas Current off south-eastern Africa (Quartly *et al.*, 2006). Sightings and catches extended over a broad area from Africa to Australia, and were just south of a band of high eddy variability extending from Madagascar to Australia (Palastanga *et al.*, 2007).

Australia and Indonesia

Sighting rates off southern and western Australia were among the highest recorded (7.4–18.6 groups per 1,000 km). These areas were also where Soviet whalers took large catches of pygmy blue whales, and where relatively many strandings have been recorded. Given the near continuous distribution of records from Tasmania to Indonesia, it is likely that these blue whales form one population. Recordings of blue whales off western Australia include Australia-specific calls, presumably from pygmy blue whales, which peak from February to May, and limited numbers of Antarctic-type calls from May to October (Ljungblad *et al.*, 1997; McCauley *et al.*, 2004; Stafford *et al.*, 2004). Additionally, the 1898 stranding off south-west Australia was of a physically immature Antarctic blue whale, 24.0 m in length (Bannister *et al.*, 2005). Thus while the great majority of blue whales in this region are probably pygmy blue whales, a few Antarctic blue whales migrate here in the austral winter. Environmental factors driving biological enrichment and enhanced blue whale foraging in this region include upwelling, eddy shedding and current meandering. Upwelling is most evident along the southern coasts of Java and Sumbawa Islands, Indonesia (Hendiarti, Siegel & Ohde, 2004), in the eastern Great Australian Bight (McClatchie, Middleton & Ward, 2006) including the Bonney Upwelling region (Gill, 2002), and at Perth Canyon, Western Australia, where a strong subsurface chlorophyll maximum (i.e., not evident in satellite imagery) supports seasonal blue whale foraging (Rennie, McCauley & Pattiaratchi, 2006). Eddy shedding is evident in the Leeuwin Current (Fang & Morrow, 2003), and current meandering interacts with upwelling around Halmahere Island, Indonesia (Christian *et al.*, 2004).

Northern Indian Ocean

Numerous catches were recorded off Oman and Somalia, and around the Maldives and Sri Lanka. Sightings and strandings were recorded year-round in high productivity portions of the northern Indian Ocean, especially off Somalia (Small & Small, 1991), the Maldives (Anderson, 2005) and Sri Lanka (Alling *et al.*, 1991). Strandings were also reported from a much wider area (Bangladesh, Burma, India, and Pakistan) than sightings and catches. Sighting rates were generally higher than in the Antarctic, except off Oman where sightings were rare. Calls recorded from Sri Lanka (Alling *et al.*, 1991) are distinct from those recorded off Madagascar, Australia and around the Antarctic but have also been recorded south of the equator at Diego Garcia (Stafford *et al.*, 2005). This region encompasses the Arabian Sea, a productive upwelling region during the south-west monsoon (Longhurst, 1998). Localized upwelling also occurs between the southern tip of India and Sri Lanka (Rao *et al.*, 2006), where blue whales are known to feed.

It has been suggested that northern Indian Ocean blue whales are a separate subspecies, *B. m. indica* (Blyth, 1859). While this name is accepted as valid, and has nomenclatural priority over both *brevicauda* (Ichihara, 1966) and *intermedia* (Burmeister, 1871), the distinguishing features (if any) of northern Indian Ocean blue whales are poorly known (Rice 1998). It seems more likely that northern Indian Ocean and pygmy blue whales belong to the same subspecies, based on Soviet catches, where the mean length of sexually mature females from the northern Indian Ocean is 69 ft (21.0 m), nearly identical to that for pygmy blue whales from the southern Indian Ocean, and in contrast to the ~84 ft (25.6 m) from Antarctic catches (Branch *et al.*, accepted). On the other hand, their geographic distribution is fairly discrete (Figure 10), and their breeding cycle is six months out of phase with those in the southern Indian Ocean (Mikhalev, 2000, p. 151). It is noteworthy that a resident population of humpback whales in the northern Indian Ocean (particularly the Arabian Sea) also has a reproductive cycle shifted by six months compared to the Southern Hemisphere (Mikhalev 1997b).

South-east Pacific (Chile, Peru, Ecuador)

Sightings, strandings and catches were recorded throughout the waters of Chile, Peru, Ecuador and the Galapagos in a nearly continuous distribution bounded to the south by the South Subtropical Front and to the north by the Equatorial Front. This population is supported by the rich upwellings along the extent of the Humboldt Current (Carr & Kearns, 2003), and by topographic and equatorial upwelling processes near the Galapagos (Palacios, 2004). Recent sighting rates from an offshore survey (Findlay *et al.*, 1998) and from the inshore Chiloé Island-Corcovado region (e.g. Hucke-Gaete *et al.*, 2003; Galletti Vernazzani *et al.*, 2006) are one to two orders of magnitude higher than those recorded in the Antarctic (from the IDCR/SOWER, JARPA, and JSV surveys).

Several lines of evidence confirm that blue whales in Chilean waters are not from the same population as those in the Antarctic. First, hundreds of blue whales were caught annually in Chile in the 1960s (Clarke *et al.*, 1978) at a time when Antarctic blue whales numbered less than a thousand (Branch *et al.*, 2004). Second, a feeding and nursing aggregation of blue whales was discovered in southern Chilean waters during the summer when Antarctic blue whales should be in polar waters (Hucke-Gaete *et al.*, 2003). Finally, there was a distinct gap between the southernmost sightings at 44°S and the northernmost Antarctic records at 64°S, corresponding to the region between the South Subtropical Front and the Antarctic Polar Front.

Acoustic data include a call type unique to the south-east Pacific (Cummings & Thompson, 1971; Stafford *et al.*, 1999, T. Norris, unpublished data). In the eastern tropical Pacific, this call type was paired with Antarctic call type during June–September although the Antarctic calls were recorded much more rarely (Stafford *et al.*, 1999; Stafford *et al.*, 2004).

The subspecific status of south-east Pacific blue whales remains a topic open for debate. The gap of 20° latitude between their southernmost distribution and the northernmost Antarctic records, and their high density peaking in summer months in Chile are evidence that they are not Antarctic blue whales. Aguayo (1974) asserts that 10 out of 168 examined Chilean catches were pygmy blue whales (but provides no details), and an examination of a stranded individual (Van Waerebeek *et al.*, 1997) suggested more affinity to Antarctic blue whales than to pygmy blue whales. South-east Pacific blue whales have a unique acoustic call type (Cummings & Thompson, 1971; Stafford *et al.*, 1999, T. Norris, unpublished data). Genetic evidence has suggested similar levels of divergences between Antarctic samples, Indian Ocean samples, and those from the south-east Pacific (LeDuc *et al.*, in press). The mean length of sexually mature blue whales from Chile (23.5 m) is intermediate between pygmy (21.0 m) and Antarctic (25.6 m) blue whales (Branch *et al.*, 2007). These lines of evidence led Branch *et al.* (2007) to hypothesize that these blue whales may belong to a separate as-yet undescribed subspecies, although this remains to be demonstrated.

New Zealand and south-west Pacific islands

A distinct grouping of catches, sightings and strandings was recorded from New Zealand, separated by the 155°E longitude line from blue whales recorded around Tasmania. In the JSV database, no sightings were recorded in the Tasman Sea despite high search effort. It seems reasonable to conclude that these blue whales are linked to those recorded from New Zealand northward to the equator. This area is influenced by frontal dynamics at the Subtropical Front to the south and the Tasman Front to the north, and by upwelling at several sites along the coast of New Zealand (Longhurst, 1998). Sounds produced off northern New Zealand differ from those produced by pygmy blue whales from the Indian Ocean (McDonald, 2006; McDonald *et al.*, 2006), however, these sounds were only recorded four times during a full year of monitoring and just once from acoustic data monitored in the early 1960's (Kibblewhite *et al.*, 1967; McDonald, 2006). Two of the New Zealand strandings are too long to have been pygmy blue whales: a 26.5 m individual in February 1908 (Waite, 1912), and a 27.4 m blue whale in April 1978 (A.N. Baker unpublished data). Matters are complicated further in that reported Soviet catches in this area do not include length data but were considered to be pygmy blue whales (Mikhalev, 2000) and because Antarctic calls have been recorded from this area in the winter months (McDonald, 2006). The available evidence suggests that blue whales recorded here in austral summer months are probably a separate population of pygmy blue whales but further work on morphology, acoustics and genetics is needed to clarify their relationship to the described subspecies.

Migration

Antarctic blue whales

The classic theory for Antarctic blue whales holds that they migrate to the Antarctic in the austral summer to feed, and then migrate to a variety of more northerly locations in the winter to calve and mate (Mackintosh, 1966). Good supporting evidence is available for the winter migration of Antarctic blue whales to the west coast of South Africa, Namibia and Angola (e.g. Best, 1998). First, large females were recorded in south-west African locales with similar morphology to blue whales at South Georgia (Mackintosh & Wheeler, 1929). Second, Antarctic catches peaked in the austral summer, and south-west African catches peaked in the austral winter. Third, south-west African catches plummeted to near zero with identical timing to the substantial depletion in the Antarctic. Fourth, only two sightings have been recorded in the region since whaling ceased (although effort is limited), implying that blue whales off south-west Africa remain substantially depleted.

Similar evidence links Durban with Antarctic blue whales: size distribution, seasonal distribution of catches and a plummeting catch per unit effort (Best, 2003). However, later catches and sightings off Durban were primarily in March–May instead of the earlier catch peak in June–July; catch per unit effort decreased to 3% (Best, 2003) instead of the 0.3% levels expected (Branch *et al.*, 2004); a pygmy blue whale was caught there in September 1963 (Gambell, 1964); and four out of 12 pregnant blue whales caught at Durban were shorter than 75 ft (IWC catch database). These data suggest that in later years most blue whales encountered at Durban were pygmy blue whales.

In areas other than southern Africa, the main evidence for migration comes from acoustic detections of the characteristic 28-Hz Antarctic call type and occasional strandings of Antarctic-length blue whales. Antarctic blue whale calls have been recorded in winter months in a variety of locations: the eastern tropical Pacific, the central Indian Ocean, south-west Australia and northern New Zealand (Stafford *et al.*, 1999; McCauley *et al.*, 2004; Stafford *et al.*, 2004; Stafford *et al.*, 2005; McDonald, 2006). Nevertheless these call detections are generally infrequent, suggesting small numbers of calling blue whales. Strandings might be expected to shed light on migration patterns but few unambiguous Antarctic blue whales have stranded and been examined: notably a 24.0 m physically immature blue whale in Australia in 1898 (Bannister *et al.*, 2005), and a 27.4 m individual in New Zealand in April 1978 (A.N. Baker, unpublished data).

While the acoustic detections provide evidence that Antarctic blue whales migrate to northerly locations in winter, it is still unknown what proportion migrate. Moored acoustic devices along the Western Antarctic Peninsula (Širović *et al.*, 2004) and in East Antarctica (67°S 70°E) (McKay *et al.*, 2005) detected Antarctic blue whales year-round. Admittedly, these acoustic detections were greatly reduced in winter months, but it is likely that this reduction was due to the encroachment of heavy ice cover over the acoustic devices (Širović *et al.*, 2004), forcing the blue whales northwards. At South Georgia, although few vessels attempted whaling in the winter months, Risting (1928, p. 20) reported that 559 blue whales were taken during July–September in 1914–1918, i.e. 5.0% of the 11,114 blue whales taken in those years (source: IWC). Hinton (1915, p. 155) also records that while humpbacks were present only between October to March around South Georgia, “finback and blue whale are to be found around the island at all times”. Thus, at least some Antarctic blue whales do not migrate northwards in winter. No information is available from Discovery marks since these were recovered only in the Antarctic ($n = 103$) and Subantarctic ($n = 1$) during summer months. Overall, the available evidence suggests that Antarctic blue whales generally do migrate to northerly locations in winter, although some overwinter in the Antarctic.

Pygmy blue whales

The migration patterns of pygmy blue whales are poorly known. High densities observed during summer months in the northern Indian Ocean, off southern Madagascar and Australia and around New Zealand provide evidence that these blue whales do not migrate to the Antarctic (Ichihara, 1966; Kato *et al.*, 1995; Mikhalev, 2000; Gill, 2002; Best *et al.*, 2003).

In the northern Indian Ocean, blue whales are present around Sri Lanka and India in all months of the year and seasonally around the Maldives (Alling *et al.*, 1991; Anderson, 2005). The call type recorded off Sri Lanka from February to April was recorded from Diego Garcia from May to December (except July) suggesting some movement between these two areas on a seasonal basis. A more fine-scale analysis of seasonal movements within the northern Indian Ocean is ongoing and will be reported separately.

The pygmy blue whales recorded south of Madagascar appear to move southwards and spread longitudinally in the southern Indian Ocean in the summer. In January through March pygmy blue whales are distributed almost continuously in the Subantarctic between Africa and Australia (Figure 11). The call type recorded south of Madagascar in December was recorded in Diego Garcia (6°18'S 71°E) in May–July (Stafford *et al.*, 2005), suggesting a northern migration in winter.

Around Australia and Indonesia the monthly data suggest a migratory link between Australia and Indonesia around the western coast of Australia. As shown in Figures 11–12, blue whales have been recorded in Indonesian waters during May to November while high concentrations are reported from the southern coast of Australia mostly during the austral summer (November to May). Acoustic detections off West Australia (21°S) record blue whales apparently migrating northwards in June–July and southwards in November–December (R.D. McCauley, unpublished data). In July–October the acoustic detections from Cape Leeuwin, Australia (35°S 114°E) included Antarctic blue whales only, but from November to June Australian call types were often recorded there (McCauley *et al.*, 2004; Stafford *et al.*, 2004).

Off north-western New Zealand there is little evidence for migration, although it seems reasonable to hypothesize that some blue whales migrate from New Zealand northwards to the Pacific islands in winter. These blue whales were described as pygmy blue whales in Soviet catches (Mikhalev, 2000), although length data are not available for confirmation.

South-east Pacific blue whales

In the south-east Pacific, sightings and catches of blue whales peak in the summer months, while in August to November there are numerous records off Peru and the Galapagos. These data can be used to infer a migration from southern Chilean waters in summer to more northerly regions in winter, although the data also show that some blue whales remain in each of these regions all year.

Population status

Since the type and amount of effort differ substantially from region to region, the resulting sighting rates are only a qualitative measure of the status of the blue whale populations discussed here. For Antarctic blue whales, sightings remain rare in the Antarctic (0.17–0.52 per 1,000 km) despite considerable effort during dedicated sightings surveys. Sightings are also concentrated at the edge of the pack ice whereas historical catches were more broadly distributed, especially in the summer months. Recorded sightings are also rare (only two since the 1960s) off south-west Africa where large catches of Antarctic blue whales were taken in the 20th century (C. Allison, IWC catch database). This pattern is consistent with substantial depletion of Antarctic blue whales to a low point of 0.07–0.29% of pre-exploitation levels in 1973 (Branch *et al.*, 2004). Until recently there was little evidence for recovery in this subspecies, but Branch *et al.* (2004) showed statistical evidence that they are increasing at 7.3% per year (95% interval 1.4%–11.6%), while remaining below 1% of their original levels.

Within the known distribution range of pygmy blue whales (Indian Ocean including Indonesian waters, south of Australia and north of New Zealand), there are areas with sighting rates 1–2 orders of magnitude higher than in the Antarctic. This is of particular interest because of the intensive effort associated with Antarctic sighting surveys compared to the lower effective effort in many pygmy blue whale areas. This may reflect a higher density and perhaps abundance of

pygmy blue whales compared to Antarctic blue whales, although this may only apply to specific regions where survey effort has been directed. Given that catches of pygmy blue whales were much lower than Antarctic blue whales (~13,000 vs. >330,000; Branch *et al.*, 2004), and current densities in at least some places are higher, it is clear that pygmy blue whales are less depleted at present than Antarctic blue whales, although their status remains highly uncertain. Relatively high numbers of recent sightings and strandings of south-east Pacific blue whales, and a lack of decline in catches in the 1960s, suggest that this population is also less depleted than in the Antarctic, although again, their status remains uncertain.

ACKNOWLEDGEMENTS

We are grateful for sightings and strandings contributed, and assistance received in many different ways, from the following sources: A. Alling, J. Barendse, L. Bedriñana, C.W. Clark, R. Constantine, J. Cotton, B.M. Dyer, P. Ensor, K. Evans, B. Haase, S. Heinrich, D. Hyrenbach, T.A. Jefferson, C. Kemper, F. Kennedy, S. Kromann, R.G. LeDuc, A.R. Martin, M.A. McDonald, S.A. Mizroch, M.J. Moore, S. Ohsumi, P. Olson, V. Peddemors, R.L. Pitman, R. Praderi, S. Reilly, D. Rice, H. Shigemune, A. Širović, E. Sullivan, P. Taylor, C.T. Tynan, R. Veit, I. Visser, C. Weir, A.N. Zerbini, members of the Oman Whale and Dolphin Research Group (R. Baldwin, T. Collins, L. Ponnampalam, F. Kennedy, and G. Minton), and the New Zealand Department of Conservation. Frontal paths in the Southern Ocean were provided by I. M. Belkin, J. K. Moore, and A.H. Orsi and the Costa Rica Dome by P.C. Fiedler. Chlorophyll-*a* data were obtained from the SeaWiFS Project, NASA/Goddard Space Flight Center, and ORBIMAGE. Helpful comments on the manuscript were received from R. Reeves and an anonymous reviewer. D.M.P. was supported by award No. N00014-05-1-0045 from the U.S. National Oceanographic Partnership Program. T.A.B. is very grateful for funding from the International Whaling Commission and the South African National Antarctic Programme, without which this project would never have been attempted.

REFERENCES

- Ackley, S., Wadhams, P., Comiso, J.C. & Worby, A.P. (2003) Decadal increase of Antarctic sea ice extent inferred from whaling records revisited on the basis of historical and modern sea ice records. *Polar Research*, **22**, 19–25.
- Aguayo, A., Bernal, R., Olavarria, C., Vallejos, V. & Hucke, R. (1998) Observaciones de cetáceos realizadas entre Valparaíso e isla de Pascua, Chile, durante los inviernos de 1993, 1994 y 1995. *Revista de Biología Marina y Oceanografía*, **33**, 101–123.
- Aguayo, L.A. (1974) Baleen whales off continental Chile. In: *The whale problem: a status report* (Ed. by W.E. Schevill), pp. 209–217. Harvard University Press, Cambridge, Mass.
- Al-Robaae, K. (1974) *Tursiops aduncus* bottlenosed dolphin: a new record for Arab Gulf, with notes on Cetacea of the region. *Bulletin of the Basrah Natural History Museum*, **1**, 7–16.
- Alling, A., Dorsey, E.M. & Gordon, J.C.D. (1991) Blue whales (*Balaenoptera musculus*) off the Northeast coast of Sri Lanka: distribution, feeding and individual identification. *UNEP Marine Mammal Technical Report*, **3**, 247–258.
- Anderson, J. (1878) Anatomical and zoological researches: comprising an account of the zoological results of the two expeditions to Western Yunnan in 1868 and 1875; and a monograph of the two cetacean genera, *Platanista* and *Orcella*. Bernard Quaritch, London. Vol. 2: 551–564 + plate XLIV.
- Anderson, R.C. (2005) Observations of cetaceans in the Maldives, 1990–2002. *Journal of Cetacean Research and Management*, **7**, 119–135.
- Anderson, R.C., Shaan, A. & Waheed, Z. (1999) Records of cetacean ‘strandings’ from the Maldives. *Journal of South Asian Natural History*, **4**, 187–202.
- Anonymous (1874) River Leven. A whale, there she spouts. *Launceston Examiner: Commercial and Agricultural Advertiser*, Thursday, 30 July 1874.
- Anonymous (1987a) Oman. Progress report on cetacean research, June 1985 to May 1986. *Report of the International Whaling Commission*, **37**, 180.
- Anonymous (1987b) *Balaenoptera musculus* stranded at Tirur beach on 18-10-1986 (total length 13 m). *Marine Fisheries Information Service Technical & Extension Series*, **71**, front cover.
- Atkinson, A., Siegel, V., Pakhomov, E. & Rothery, P. (2004) Long-term decline in krill stock and increase in salps within the Southern Ocean. *Nature*, **432**, 100–103.
- Ballance, L.T., Anderson, R.C., Pitman, R.L., Stafford, K., Shaan, A., Waheed, Z. & Brownell, R.L.J. (2001) Cetacean sightings around the Republic of the Maldives, April 1998. *Journal of Cetacean Research and Management*, **3**, 213–218.
- Ballance, L.T. & Pitman, R.L. (1998) Cetaceans of the Western Tropical Indian Ocean: distribution, relative abundance, and comparisons with cetacean communities of two other tropical ecosystems. *Marine Mammal Science*, **14**, 429–459.
- Ballance, L.T., Pitman, R.L., Reilly, S.B. & Force, M.P. (1996) Report of a cetacean, seabird, marine turtle and flying fish survey of the western tropical Indian Ocean aboard the research vessel *Malcolm Baldrige*, March 21–July 26, 1995. *NOAA Technical Memorandum NMFS-NWFSC*, **224**, 132 pp.

- Bannister, J.L., Burton, C.L.K. & Hedley, S.L. (2005) Investigation of blue whales in the Perth Canyon, Western Australia, 2005 — aerial surveys. Final report, to 30 November 2005, on work done under the consultancy services agreement between the Commonwealth of Australia and the Western Australian Museum, 7 December 2004. 13pp.
- Bannister, J.L. & Gambell, R. (1965) The succession and abundance of fin, sei, and other whales off Durban. *Norsk Hvalfangst-Tidende*, **54**, 45–60.
- Bensam, P., Vincent, S.G. & Mahadevan Pillai, P.K. (1972) On a rorqual, *Balaenoptera* sp. caught off Tuticorin, Gulf of Mannar. *Journal of the Marine Biological Association of India*, **14**(2), 886–887.
- Best, P.B. (1998) Blue whales off Namibia — a possible wintering ground for the Antarctic population. Paper SC/50/CAWS14 presented to the IWC Scientific Committee, April 1998, Muscat, Oman [Available from IWC, The Red House, 135 Station Road, Impington, Cambridge, CB4 9NP, U.K.]
- Best, P.B. (2003) How low did they go? An historical comparison of indices of abundance for some baleen whales on the Durban whaling ground. Paper SC/55/SH18 presented to the IWC Scientific Committee, May 2003, Berlin [Available from IWC, The Red House, 135 Station Road, Impington, Cambridge, CB4 9NP, U.K.]
- Best, P.B., Rademeyer, R.A., Burton, C., Ljungblad, D., Sekiguchi, K., Shimada, H., Thiele, D., Reeb, D. & Butterworth, D.S. (2003) The abundance of blue whales on the Madagascar Plateau, December 1996. *Journal of Cetacean Research and Management*, **5**, 253–260.
- Blokhin, S.A. (1981) The results of the cruise of the whaler *Recordniy* in the coastal waters of Australia in March 1979. *Report of the International Whaling Commission*, **31**, 723–727.
- Blyth, E. (1859) On the great rorqual of the Indian Ocean, with notices of other cetals, and of the Syrenia or marine Pachyderms. *Journal of the Asiatic Society of Bengal*, **28**, 481–498.
- Borsa, P. (2006) Marine mammal strandings in the New Caledonia region, Southwest Pacific. *Comptes Rendus Biologies*, **329**, 277–288.
- Borsa, P. & Hoarau, G. (2004) A pygmy blue whale (Cetacea: Balaenopteridae) in the inshore waters of New Caledonia. *Pacific Science*, **58**, 579–584.
- Bowles, A.E., Smultea, M., Wursig, B., DeMaster, D.P. & Palka, D. (1994) Relative abundance and behavior of marine mammals exposed to transmissions from the Heard Island Feasibility Test. *Journal of the Acoustical Society of America*, **96**, 2469–2484.
- Branch, T.A., Abubaker, E.M.N., Mkango, S. & Butterworth, D.S. (2007) Separating southern blue whale subspecies based on length frequencies of sexually mature females. *Marine Mammal Science*.
- Branch, T.A. & Butterworth, D.S. (2001a) Southern Hemisphere minke whales: standardised abundance estimates from the 1978/79 to 1997/98 IDCR/SOWER surveys. *Journal of Cetacean Research and Management*, **3**, 143–174.
- Branch, T.A. & Butterworth, D.S. (2001b) Estimates of abundance south of 60°S for cetacean species sighted frequently on the 1978/79 to 1997/98 IWC/IDCR-SOWER sighting surveys. *Journal of Cetacean Research and Management*, **3**, 251–270.
- Branch, T.A., Matsuoka, K. & Miyashita, T. (2004) Evidence for increases in Antarctic blue whales based on Bayesian modelling. *Marine Mammal Science*, **20**, 726–754.
- Brinton, E., Ohman, M.D., Townsend, A.W., Knight, M.D. & Bridgeman, A.L. (2000) *Euphausiids of the World Ocean. World Biodiversity Database CD-ROM Series*. Springer-Verlag, Berlin.
- Brown, S.G. (1954) Dispersal in blue and fin whales. *Discovery Reports*, **26**, 355–384.
- Brown, S.G. (1957) Whales observed in the Indian Ocean. *Marine Observer*, **27**, 157–165.
- Brown, S.G. (1958) Whales observed in the Atlantic Ocean. *Marine Observer*, **27**, 142–146.
- Brown, S.G. (1962) The movements of fin and blue whales within the Antarctic zone. *Discovery Reports*, **33**, 1–54.
- Burmeister, H. (1871) Del Año 1871. *Boletín del Museo Público de Buenos Aires*, **1871**, 11–20. [in Spanish]
- Burmeister, H. (1872) On *Balaenoptera patachonica* and *B. intermedia*. *The Annals and Magazine of Natural History*, **ser 4 vol 10**, 413–418.
- Cabrera, E., Carlson, C. & Galletti Vernazzani, B. (2005) Presence of blue whale (*Balaenoptera musculus*) in the northwestern coast of Chiloe Island, southern Chile. *Latin American Journal of Aquatic Mammals*, **4**(1), 73–74.
- Cabrera, E., Carlson, C., Galletti Vernazzani, B. & Brownell, R.L.J. (2006) Preliminary report on the photo-identification of blue whales off Isla de Chiloé, Chile from 2004 to 2006. Paper SC/58/SH18 presented to the IWC Scientific Committee, June 2006, St Kitts and Nevis, WI [Available from IWC, The Red House, 135 Station Road, Impington, Cambridge, CB4 9NP, U.K.]
- Carr, M.-E. & Kearns, E.J. (2003) Production regimes in four Eastern Boundary Current systems. *Deep-Sea Research II*, **50**, 3199–3221.
- Casey, K.S. & Cornillon, P. (1999) A comparison of satellite and in situ-based sea surface temperature climatologies. *Journal of Climate*, **12**, 1848–1863.
- Cawthorn, M.W. (1978) Whale research in New Zealand. *Report of the International Whaling Commission*, **28**, 109–113.
- Cawthorn, M.W. (1983) New Zealand progress report on cetacean research May 1981 to May 1982. *Report of the International Whaling Commission*, **33**, 223–229.

- Cawthorn, M.W. (1988) New Zealand. Progress report on cetacean research, May 1986–May 1987. *Report of the International Whaling Commission*, **38**, 204.
- Chari, V.K. (1951) The Great Indian Rorqual or Fin-Whale *Balaenoptera indica* Blyth off Umargam (Bombay State). *Journal of the Bombay Natural History Society*, **50**, 167.
- Chittleborough, R.G. (1953) Aerial observations on the humpback whales, *Megaptera nodosa* (Bonnaterre), with notes on other species. *Australian Journal of Marine and Freshwater Research*, **4**, 219–226.
- Christian, J.R., Murtugudde, R., Ballabrera-Poy, J. & McClain, C.R. (2004) A ribbon of dark water: phytoplankton blooms in the meanders of the Pacific North Equatorial Countercurrent. *Deep-Sea Research II*, **51**, 209–228.
- Clark, C.W. & Fowler, M. (2001) Status of archival and analysis effort of acoustic recordings during SOWER and IWC cruises 1996–2000. Paper SC/53/IA28 presented to the IWC Scientific Committee, July 2001, London [Available from IWC, The Red House, 135 Station Road, Impington, Cambridge, CB4 9NP, U.K.]
- Clarke, C., Aguayo, A. & Basulto, S. (1978) Whale observation and whale marking off the coast of Chile in 1964. *Scientific Reports of the Whales Research Institute*, **30**, 117–177.
- Clarke, R. & Ruud, J.T. (1954) International co-operation in whale marking: the voyage of the *Enern* to the Antarctic 1953. *Norwegian Whaling Gazette*, **1954(3)**, 128–146.
- Conway, C.A. (2005) Global population structure of blue whales, *Balaenoptera musculus ssp.*, based on nuclear genetic variation. PhD thesis, University of California Davis.
- Cotté, C. & Guinet, C. (2007) Historical whaling records reveal major regional retreat of Antarctic sea ice. *Deep-Sea Research I*, **54**, 243–252.
- Corbett, H.D. (1994) The occurrence of cetaceans off Mauritius and in adjacent waters. *Report of the International Whaling Commission*, **44**, 393–397.
- Croll, D.A., Marinovic, B., Benson, S., Chavez, F.P., Black, N., Ternullo, R. & Tershy, B.R. (2005) From wind to whales: trophic links in a coastal upwelling system. *Marine Ecology Progress Series*, **289**, 117–130.
- Croxall, J.P. & Wood, A.G. (2002) The importance of the Patagonian Shelf for top predator species breeding at South Georgia. *Aquatic Conservation: Marine and Freshwater Ecosystems*, **12**, 101–118.
- Cummings, W.C. & Thompson, P.O. (1971) Underwater sounds from the Blue Whale, *Balaenoptera musculus*. *Journal of the Acoustical Society of America*, **50**, 1193–1198.
- da Rocha, J.M. (1983) Revision of Brazilian whaling data. *Report of the International Whaling Commission*, **33**, 419–427.
- Dalla Rosa, L. & Secchi, E.R. (1997) Stranding of a blue whale (*Balaenoptera musculus*) in southern Brazil: ‘true’ or pygmy? *Report of the International Whaling Commission*, **47**, 425–430.
- Daniel, J.C. (1963) Stranding of a blue whale *Balaenoptera musculus* (Linn.) near Surat, Gujarat, with notes on earlier literature. *Journal of the Bombay Natural History Society*, **60**, 252–254.
- de Boer, M.N. (2000) Observations on occurrence and distribution of cetaceans in the Southern Ocean Sanctuary and southern part of the Indian Ocean Sanctuary. Paper SC/52/O9 presented to the IWC Scientific Committee, June 2000, Adelaide, Australia [Available from IWC, The Red House, 135 Station Road, Impington, Cambridge, CB4 9NP, U.K.]
- de la Mare, W.K. (1997) Abrupt mid-twentieth-century decline in Antarctic ice extent from whaling records. *Nature*, **389**, 57–60.
- De Silva, P.H.D.H. (1987) Cetaceans (whales, dolphins and porpoises) recorded off Sri Lanka, India, from the Arabian Sea and Gulf, Gulf of Aden and from the Red Sea. *Journal of the Bombay Natural History Society*, **84**, 505–525.
- Delsman, H.C. (1932) Een walvisch gestrand. *De Tropische Natuur*, **21**, 49.
- Deraniyagala, P.E.P. (1948) Some mystacetid whales from Ceylon. *Spolia Zeylanica*, **25**, 61–63.
- Deraniyagala, P.E.P. (1960) Some southern temperate zone snakes, birds and whales that enter the Ceylon area (Part I). *Spolia Zeylanica*, **29(1)**, 79–85.
- Deraniyagala, P.E.P. (1965) A sanctuary for turtles, the dugong, whales and dolphins in the Indian and Southern Oceans. *Loris*, **10(4)**, 246–250.
- Dixon, J.M. & Frigo, L. (1994) *The cetacean collection of the Museum of Victoria, an annotated catalogue*. Australian Deer Research Foundation Ltd, Croydon.
- Donovan, G.P. (1984a) Blue whales off Peru, December 1982, with special reference to pygmy blue whales. *Report of the International Whaling Commission*, **34**, 473–476.
- Donovan, G.P. (1984b) Small cetaceans seen during the IWC/IDCR research cruise in the Eastern Tropical Pacific, and in particular off Peru. *Report of the International Whaling Commission*, **34**, 561–567.
- Ensor, P., Findlay, K., Huckle-Gaete, R., Kleivane, L., Komiya, H., Ljungblad, D., Marques, F., Miura, T., Sekiguchi, K. & Shimada, H. (2000) 1999–2000 IWC-Southern Ocean Whale and Ecosystem Research (IWC-SOWER) Antarctic cruise, Areas I and II. Paper SC/52/O10 presented to the IWC Scientific Committee, June 2000, Adelaide, Australia [Available from IWC, The Red House, 135 Station Road, Impington, Cambridge, CB4 9NP, U.K.]
- Ensor, P., Komiya, H., Olson, P., Sekiguchi, K. & Stafford, K. (2006) 2005–2006 International Whaling Commission-Southern Ocean Whale and Ecosystem Research (IWC-SOWER) cruise. Paper SC/58/IA1 presented to the IWC

- Scientific Committee, June 2006, St Kitts and Nevis, WI [Available from IWC, The Red House, 135 Station Road, Impington, Cambridge, CB4 9NP, U.K.]
- Ensor, P., Matsuoka, K., Komiya, H., Ljungblad, D., Miura, T., Morse, L., Olson, P., Olavarria, C., Mori, M. & Sekiguchi, K. (2004) 2003–2004 International Whaling Commission-Southern Ocean Whale and Ecosystem Research (IWC-SOWER) Circumpolar Cruise, Area V. Paper SC/56/IA13 presented to the IWC Scientific Committee, July 2004, Sorrento, Italy [Available from IWC, The Red House, 135 Station Road, Impington, Cambridge, CB4 9NP, U.K.]
- Ensor, P., Sekiguchi, K., Doherty, J., Kleivane, L., Ljungblad, D., Marques, F., Matsuoka, K., Narita, H., Pitman, R. & Sakai, K. (1999) 1998–99 IWC-Southern Ocean Whale and Ecosystem Research (IWC-SOWER) Antarctic Cruise, Areas III and IV. Paper SC/51/CAWS6 presented to the IWC Scientific Committee, May 1999, Grenada, WI [Available from IWC, The Red House, 135 Station Road, Impington, Cambridge, CB4 9NP, U.K.]
- Eyre, E.J. (1995) Observations of cetaceans in the Indian Ocean Whale Sanctuary, May–July 1993. *Report of the International Whaling Commission*, **45**, 419–426.
- Eyre, E.J. (2000) Observations of cetaceans in the Indian Ocean Sanctuary, Mauritius to Singapore, April 2000. Paper SC/52/O16 presented to the IWC Scientific Committee, June 2000, Adelaide, Australia [Available from IWC, The Red House, 135 Station Road, Impington, Cambridge, CB4 9NP, U.K.]
- Fang, F. & Morrow, R. (2003) Evolution, movement and decay of warm-core Leeuwin Current eddies. *Deep-Sea Research I*, **50**, 1893–1931.
- Fiedler, P.C. (2002) The annual cycle and biological effects of the Costa Rica Dome. *Deep-Sea Research I*, **49**, 321–338.
- Findlay, K., Pitman, R., Tsurui, T., Sakai, K., Ensor, P., Iwakami, H., Ljungblad, D., Shimada, H., Thiele, D., Van Waerebeek, K., Hucke-Gaete, R. & Sanino-Vattier, G.P. (1998) 1997/1998 IWC-Southern Ocean Whale and Ecosystem Research (IWC-SOWER) blue whale cruise, Chile. Paper SC/50/Rep2 presented to the IWC Scientific Committee, April 1998, Muscat, Oman [Available from IWC, The Red House, 135 Station Road, Impington, Cambridge, CB4 9NP, U.K.]
- Galletti Vernazzani, B., Carlson, C., Cabrera, E. & Brownell, R.L.J. (2006) Blue, sei and humpback whale sightings during 2006 field season in northwestern Isla de Chiloe, Chile. Paper SC/58/SH17 presented to the IWC Scientific Committee, June 2006, St Kitts and Nevis, WI [Available from IWC, The Red House, 135 Station Road, Impington, Cambridge, CB4 9NP, U.K.]
- Galletti Vernazzani, B., Carlson, C.A. & Cabrera, E. (2005) Blue whale sightings during the 2005 field season in Northwestern Chiloe Island, Southern Chile. Paper SC/57/SH14 presented to the IWC Scientific Committee, June 2005, Ulsan, Korea [Available from IWC, The Red House, 135 Station Road, Impington, Cambridge, CB4 9NP, U.K.]
- Gambell, R. (1979) The blue whale. *Biologist*, **26**, 209–215.
- Gambell, R., Best, P.B. & Rice, D.W. (1975) Report of the Scientific Committee, Annex W. Report on the International Indian Ocean Whaling Marking Cruise, 24 November 1973 – 3 February 1974. *Report of the International Whaling Commission*, **25**, 240–252.
- Gambell, R.G. (1964) A pygmy blue whale at Durban. *Norsk Hvalfangst-Tidende*, **53**, 66–68.
- Gill, P.C. (2002) A blue whale (*Balaenoptera musculus*) feeding ground in a southern Australian coastal upwelling zone. *Journal of Cetacean Research and Management*, **4**, 179–184.
- Gordon, J.C.D., Papastavrou, V. & Alling, A.K. (1986) Measuring blue whales: a photogrammetric technique. *Cetus*, **6(2)**, 5–8.
- Guiler, E.R. (1978) Whale strandings in Tasmania since 1945 with notes on some seal reports. *Papers and Proceedings of the Royal Society of Tasmania*, **112**, 189–213.
- Gunaratna, R., Obeyesekera, N. & Hahn, R. (1985) Sightings of cetaceans off the Sri Lankan southwest coast, May 1985. Paper SC/37/O7 presented to the IWC Scientific Committee, June 1985, Bournemouth, U.K. [Available from IWC, The Red House, 135 Station Road, Impington, Cambridge, CB4 9NP, U.K.]
- Haly, A. (1894) The administrative report of the director of the Colombo Museum for 1894.
- Hendiarti, N., Siegel, H. & Ohde, T. (2004) Investigation of different coastal processes in Indonesian waters using SeaWiFS data. *Deep-Sea Research II*, **51**, 85–97.
- Hill, P.S., Rasmussen, R.C. & Gerrodette, T. (1991) Report of a marine mammal survey of the Eastern Tropical Pacific aboard the research vessel *David Starr Jordan* July 28–December 6, 1990. *NOAA Technical Memorandum NMFS-NWFSC*, **158**, 141pp.
- Hinton, M.A.C. (1915) Report on the papers left by the late Major Barrett-Hamilton, relating to the whales of South Georgia. Appendix VII. Inter-departmental committee on whaling and the protection of whales. Crown Agents for the Colonies, London. *Colonial Office Miscellaneous Number* **298**, 69–193.
- Ho, C.-R., Zheng, Q. & Kuo, N.-J. (2004) SeaWiFS observations of upwelling south of Madagascar: long-term variability and interaction with East Madagascar Current. *Deep-Sea Research II*, **51**, 59–67.
- Holt, R.S. & Sexton, S.N. (1987) Report of a marine mammal survey of the Eastern Tropical Pacific aboard the research vessel *David Starr Jordan* July 29–December 5, 1986. *NOAA Technical Memorandum NMFS-NWFSC*, **76**, 180pp.

- Hucke-Gaete, R. (2004) Distribución, preferencia de hábitat y dinámica espacial de la ballena azul en Chile: 1997–2004. PhD. Universidad Austral de Chile.
- Hucke-Gaete, R., Osman, L.P., Moreno, C.A., Findlay, K.P. & Ljungblad, D.K. (2003) Discovery of a blue whale feeding and nursing ground in southern Chile. *Biology Letters*, **271**, S170–S173.
- Hucke-Gaete, R., Rosenbaum, H., Torres, J.P., Viddi, F.A., Leslie, M., Montecinos, Y., Cuellar, S. & Ruiz, J. (2006) Blue whale research and conservation off southern Chile: 2006 update. Paper SC/58/SH9 presented to the IWC Scientific Committee, June 2006, St Kitts and Nevis, WI [Available from IWC, The Red House, 135 Station Road, Impington, Cambridge, CB4 9NP, U.K.]
- Hucke-Gaete, R., Viddi, F.A. & Bello, M.E. (2005) Blue whales off southern Chile: overview of research achievements and current conservation challenges. Paper SC/57/SH5 presented to the IWC Scientific Committee, June 2005, Ulsan, Korea [Available from IWC, The Red House, 135 Station Road, Impington, Cambridge, CB4 9NP, U.K.]
- Ichihara, T. (1961) Blue whales in the waters around Kerguelen Island. *Norsk Hvalfangst-Tidende*, **50(1)**, 1–20.
- Ichihara, T. (1966) The pygmy blue whale, *Balaenoptera musculus brevicauda*, a new subspecies from the Antarctic. In: *Whales, dolphins, and porpoises* (Ed. by K.S. Norris), pp. 79–111. University of California Press, Berkeley and Los Angeles.
- Ivashin, M.V. (1971) Some results of whale-marking carried out from Soviet ships in the Southern Hemisphere. *Zoologicheskii Zhurnal*, **50**, 1063–1078.
- Jackson, A., Gerrodette, T., Chivers, S., Lynn, M., Olson, P. & Rankin, S. (2004) Marine mammal data collected during a survey in the Eastern Tropical Pacific Ocean aboard the NOAA ships *McArthur II* and *David Starr Jordan*, July 29–December 10, 2003. *NOAA Technical Memorandum NMFS-NWFSC*, **366**, 104 pp.
- James, P.S.B.R., Menon, N.G. & Pillai, N.G.K. (1993) On a blue whale, *Balaenoptera musculus* stranded at Chellanam, Cochin. *Marine Fisheries Information Service Technical & Extension Series*, **122**, 23–24.
- James, P.S.B.R. & Soundararajan, R. (1979) On a sperm whale *Physeter macrocephalus* Linnaeus stranded at Krusadai Island in the Gulf of Mannar, with an up-to-date list and diagnostic features of whales stranded along the Indian coast. *Journal of the Marine Biological Association of India*, **21**, 17–40.
- Jones, S. (1953) On the stranding of a whale at Jambudwip on the Bengal coast about 19 years ago. *Journal of the Bombay Natural History Society*, **51**, 499–500.
- Kahn, B. (2000) Komodo National Park cetacean surveys. Monitoring report — October 2000. The Nature Conservancy. Indonesia Coastal & Marine Program.
- Kahn, B. (2002) Alor Rapid Ecological Assessment — visual and acoustic cetacean surveys and evaluation of traditional whaling practices, fisheries interactions and nature-based tourism potential: October 2001 and May 2002 survey periods. Alor Rapid Ecological Assessment (REA) Technical Report for WWF - Wallacea and the Nature Conservancy Marine Program/Indonesia. 36pp.
- Kahn, B. (2005) Indonesia oceanic cetacean program activity report: April–June 2005. The Nature Conservancy.
- Kasamatsu, F., Matsuoka, K. & Hakamada, T. (2000) Interspecific relationships in density among the whale community in the Antarctic. *Polar Biology*, **23**, 466–473.
- Kasuya, T. & Wada, S. (1991) Distribution of large cetaceans in the Indian Ocean: data from Japanese sighting records, November–March. *UNEP Marine Mammal Technical Report*, **3**, 139–170.
- Kato, H., Bannister, J., Burton, C., Ljungblad, D., Matsuoka, K. & Shimada, H. (1996) Report on the JAPAN/IWC blue whale cruise 1995–96 off the southern coast of Australia. Paper SC/48/SH9 presented to the IWC Scientific Committee, June 1996, Aberdeen, U.K. [Available from IWC, The Red House, 135 Station Road, Impington, Cambridge, CB4 9NP, U.K.]
- Kato, H., Miyashita, T. & Shimada, H. (1995) Segregation of the two sub-species of the blue whale in the Southern Hemisphere. *Report of the International Whaling Commission*, **45**, 273–283.
- Kewalramani, K.M. (1969) Whale on Gujarat Coast. *Seafood Export Journal*, **1(4)**, 13–15.
- Kibblewhite, A.C., Denham, R.N. & Barnes, D.J. (1967) Unusual low-frequency signals observed in New Zealand waters. *Journal of the Acoustical Society of America*, **41**, 644–655.
- Kinnear, N.B. (1915) The baleen of the great Indian Fin-Whale (*Balaenoptera indica*). *Journal of the Bombay Natural History Society*, **23**, 577, 775–776.
- Kinzev, D., Gerrodette, T., Dizon, A., Perryman, W., Olson, P. & Rankin, S. (2001) Marine mammal data collected during a survey in the Eastern Tropical Pacific Ocean aboard the NOAA ships *McArthur* and *David Starr Jordan*, July 28–December 9, 2000. *NOAA Technical Memorandum NMFS-NWFSC*, **303**, 109 pp.
- Krishnan, A.A., Rohit, P., Dineshbabu, A.P., Nayak, T.H. & Keparaju, S. (2004) Record of stranded whales along Karnataka coast. *Marine Fisheries Information Service Technical & Extension Series*, **182**, 16.
- Lal Mohan, R.S. (1992) Observations on the whales *Balaenoptera edeni*, *B. musculus* and *Megaptera novaeangliae* washed ashore along the Indian coast with a note on their osteology. *Journal of the Marine Biological Association of India*, **34**, 253–255.

- Leatherwood, S. (1986) Whales, dolphins and porpoises of the Indian Ocean Cetacean Sanctuary: a summary of available information. Hubbs Marine Research Institute Technical Report 87-197, San Diego.
- Leatherwood, S., Peters, C.B., Santerre, R., Santerre, M. & Clarke, J.T. (1984) Observations of cetaceans in the Northern Indian Ocean Sanctuary, November 1980–May 1983. *Report of the International Whaling Commission*, **34**, 509–520.
- LeDuc, R.G., Dizon, A.E., Goto, M., Lux, C.A., Pastene, L.A. & Brownell, R.L. Jr. (1997) Discrimination of the two forms of blue whales in the Southern Hemisphere. Paper SC/49/SH25 presented to the IWC Scientific Committee, September 1997, Bournemouth, U.K. [Available from IWC, The Red House, 135 Station Road, Impington, Cambridge, CB4 9NP, U.K.]
- LeDuc, R.G., Dizon, A.E., Goto, M., Pastene, L.A., Kato, H., Nishiwaki, S. & Brownell, R.L. Jr. (in press) Patterns of genetic variation in southern hemisphere blue whales, and the use of assignment test to detect mixing on the feeding grounds. *Journal of Cetacean Research and Management*.
- Lipton, A.P., Diwan, A.D., Reghunathan, A. & Kasinathan, C. (1995) Frequent strandings of dolphins and whales along the Gulf of Mannar Coast. *Marine Fisheries Information Service Technical & Extension Series*, **138**, 11–14.
- Ljungblad, D.K. & Clark, C.W. (1998) Unique calls of the pygmy blue whale (*B. musculus brevicauda*) recorded off the coast of Chile in December 1997 and January 1998 during the SOWER 1997/1998 program. Paper SC/50/CAWS29 presented to the IWC Scientific Committee, April 1998, Muscat, Oman [Available from IWC, The Red House, 135 Station Road, Impington, Cambridge, CB4 9NP, U.K.]
- Ljungblad, D.K., Clark, C.W. & Shimada, H. (1998) A comparison of sounds attributed to pygmy blue whales (*Balaenoptera musculus brevicauda*) recorded south of the Madagascar Plateau and those attributed to ‘true’ blue whales (*Balaenoptera musculus*) recorded off Antarctica. *Report of the International Whaling Commission*, **48**, 439–442.
- Ljungblad, D.K., Stafford, K.M., Shimada, H. & Matsuoka, K. (1997) Sounds attributed to blue whales recorded off the southwest coast of Australia in December 1995. *Report of the International Whaling Commission*, **47**, 435–439.
- Longhurst, A. (1998) *Ecological Geography of the Sea*. Academic Press, San Diego.
- MacCall, A.D. (1990) *Dynamic Geography of Marine Fish Populations*. Washington Sea Grant Program, University of Washington Press, Seattle, USA.
- Mackintosh, N.A. (1942) The southern stocks of whalebone whales. *Discovery Reports*, **22**, 197–300.
- Mackintosh, N.A. (1966) Distribution of southern blue and fin whales. In: *Whales, dolphins, and porpoises* (Ed. by K.S. Norris), pp. 125–144. University of California Press, Berkeley, CA.
- Mackintosh, N.A. & Wheeler, J.F.G. (1929) Southern blue and fin whales. *Discovery Reports*, **1**, 257–540.
- Mangels, K.F. & Gerrodette, T. (1994) Report of cetacean sightings during a marine mammal survey in the Eastern Pacific Ocean and the Gulf of California aboard the NOAA ships *McArthur* and *David Starr Jordan* July 28–November 6, 1993. *NOAA Technical Memorandum NMFS-NWFSC*, **211**, 96pp.
- Marichamy, R., Rajapandian, M.E. & Srinivasan, A. (1984) The stranding of rorqual whale *Balaenoptera musculus* (Linnaeus) in the Gulf of Mannar. *Journal of the Marine Biological Association of India*, **26(1&2)**, 168–170.
- Mate, B.R., Lagerquist, B.A. & Calambokidis, J. (1999) Movements of North Pacific blue whales during the feeding season off southern California and their southern fall migration. *Marine Mammal Science*, **15**, 1246–1257.
- Matsuoka, K., Ensor, P., Hakamada, T., Shimada, H., Nishiwaki, S., Kasamatsu, F. & Kato, H. (2003) Overview of minke whale sightings surveys conducted on IWC/IDCR and SOWER Antarctic cruises from 1978/79 to 2000/01. *Journal of Cetacean Research and Management*, **5**, 173–201.
- Matsuoka, K., Hakamada, T., Kiwada, H., Murase, H. & Nishiwaki, S. (2006) Distribution and abundance estimates of blue whales in the Antarctic Areas III, IV, V and VIW (35°E–145°W) based on JARPA data. Paper SC/58/SH7 presented to the IWC Scientific Committee, June 2006, St Kitts and Nevis, WI [Available from IWC, The Red House, 135 Station Road, Impington, Cambridge, CB4 9NP, U.K.]
- McCann. (1934) The great Indian Fin whale (*Balaenoptera Indica*) stranded at Bombay. *Current Science*, **3(1)**, 3.
- McCauley, R., Bannister, J., Burton, C., Jenner, C., Rennie, S. & Kent, C.S. (2004) Western Australian exercise area blue whale project. Final summary report. Milestone 6. For Australian Defence. CMST Report R2004-29, Project - 350.
- McCauley, R.D., Jenner, C., Bannister, J.L., Burton, C.L.K., Cato, D.H. & Duncan, A. (2001) Blue whale calling in the Rottneest Trench — 2000, Western Australia. Report CMST R2001-6, project - WA Museum/CMST 241. Available from <http://www.curtin.edu.au/curtin/centre/cmst/publicat/2001-06.pdf>. 56 pp.
- McClain, C.R., Signorini, S.R. & Christian, J.R. (2004) Subtropical gyre variability observed by ocean-color satellites. *Deep-Sea Research II*, **51**, 281–301.
- McClatchie, S., Middleton, J.F. & Ward, T.M. (2006) Water mass analysis and alongshore variation in upwelling intensity in the eastern Great Australian Bight. *Journal of Geophysical Research*, **111**, doi:10.1029/2004JC002699.
- M’Coy, F. (1867) On the recent zoology and palæontology of Victoria. *Annals and Magazine of Natural History*, **20 (3rd series)**, 175–202.

- McDonald, M.A. (2006) An acoustic survey of baleen whales off Great Barrier Island, New Zealand. *New Zealand Journal of Marine and Freshwater Research*, **40**, 519–529.
- McDonald, M.A., Hildebrand, J.A. & Mesnick, S.L. (2006) Biogeographic characterization of blue whale song worldwide: using song to identify populations. *Journal of Cetacean Research and Management*, **8**, 55–65.
- McKay, S., Širović, A. & Thiele, D. (2005) Preliminary results of blue whale (*Balaenoptera musculus*) call detections in Eastern Antarctica. Paper SC/57/SH4 presented to the IWC Scientific Committee, June 2005, Ulsan, Korea [Available from IWC, The Red House, 135 Station Road, Impington, Cambridge, CB4 9NP, U.K.]
- Mikhalev, Y.A. (1978) Occurrence and distribution of cetaceans in the Pacific sector of the Antarctic regions according to the results of observations, 1973/74 and 1974/75 seasons. *Report of the International Whaling Commission*, **28**, 263–267.
- Mikhalev, Y.A. (1997a) Additional information about the catches of Soviet whaling fleet *Sovetskaya Ukraina*. *Report of the International Whaling Commission*, **47**, 147–150.
- Mikhalev, Y.A. (1997b) Humpback whales *Megaptera novaeangliae* in the Arabian Sea. *Marine Ecology Progress Series*, **149**, 13–21.
- Mikhalev, Y.A. (2000) Whaling in the Arabian Sea by the whaling fleets *Slava* and *Sovetskaya Ukraina*. In: *Soviet Whaling Data (1949–1979)* (Ed. by A.V. Yablokov & V.A. Zemsky), pp. 141–181. Center for Russian Environmental Policy Marine Mammal Council, Moscow.
- Mikhalev, Y.A. & Tormosov, D.D. (1997) Corrected data about non-Soviet whale marks recovered by Soviet whaling fleets. *Report of the International Whaling Commission*, **47**, 1019–1027.
- Miyashita, T., Kato, H. & Kasuya, T. (1995) *Worldwide map of cetacean distribution based on Japanese sighting data (Volume 1)*. National Research Institute of Far Seas Fisheries, Shimizu, Japan.
- Miyashita, T., Shigemune, H. & Kato, H. (1994) Outline of the sighting strategy of scouting vessels attached to Japanese whaling fleets. *Report of the International Whaling Commission*, **44**, 273–275.
- Mizroch, S.A., Rice, D.W. & Breiwick, J.M. (1984) The blue whale, *Balaenoptera musculus*. *Marine Fisheries Review*, **46**, 15–19.
- Mohanraj, G., Somaraju, M.V. & Seshagiri Rao, C.V. (1995) A blue whale *Balaenoptera musculus* landed at Mangamaripeta, north of Visakhapatnam. *Marine Fisheries Information Service Technical & Extension Series*, **137**, 17.
- Moore, J.K. & Abbott, M.R. (2000) Phytoplankton chlorophyll distributions and primary production in the Southern Ocean. *Journal of Geophysical Research*, **105**, 28709–28722.
- Moore, J.K. & Abbott, M.R. (2002) Surface chlorophyll concentrations in relation to the Antarctic Polar Front: seasonal and spatial patterns from satellite observations. *Journal of Marine Systems*, **37**, 69–86.
- Moore, M.J., Berrow, S.D., Jensen, B.A., Carr, P., Sears, R., Rowntree, V.J., Payne, R. & Hamilton, P.K. (1999) Relative abundance of large whales around South Georgia (1979–1998). *Marine Mammal Science*, **15**, 1287–1302.
- Moses, S.T. (1940) Whales in Baroda, with notes on the anatomy of the fin-whale (*Balaenoptera indica*) stranded at Mulvel in March 1939. *Journal of the Bombay Natural History Society*, **41**, 895–897.
- Moses, S.T. (1947) Stranding of whales on the coasts of India. *Journal of the Bombay Natural History Society*, **47**, 377–379.
- Murray, J.A. (1884) *The vertebrate zoology of Sind*. Richardson & Co., London. 424 pp.
- Nagabhushanam, A.K. & Dhulkhed, M.H. (1964) On a stranded whale on the south Kanara coast. *Journal of the Marine Biological Association of India*, **6**(2), 323–325.
- Nammalwar, P., Devadoss, P., Srinivasan, A., Chidambaram, L., Chandrasekhara Rao, T. & Hunamantha Rao, A. (1989) On the stranding of whales along the Tamil Nadu and Andhra coasts. *Marine Fisheries Information Service Technical & Extension Series*, **102**, 13–16.
- Ohsumi, S. & Shigemune, H. (1993) A sightings survey of larger whales in lower latitudinal waters of the Pacific in austral winter, with special reference to the blue whale. Paper SC/Oc93/BW WP 6 presented to the *ad hoc* Steering Group Intersessional Meeting on Research Related to Conservation of Large Baleen Whales – Blue Whales – in the Southern Ocean, October 1993, Tokyo [Available from IWC, The Red House, 135 Station Road, Impington, Cambridge, CB4 9NP, U.K.]
- Palacios, D.M. (1999a) Marine mammal research in the Galápagos Islands: The 1993–94 Odyssey Expedition. Final report submitted to Galápagos National Park Service and Charles Darwin Research Station. Puerta Ayora Is. Galápagos, Ecuador, 10 November 1999. 46 pp.
- Palacios, D.M. (1999b) Blue whale (*Balaenoptera musculus*) occurrence off the Galápagos Islands, 1978–1995. *Journal of Cetacean Research and Management*, **1**, 41–51.
- Palacios, D.M. (2004) Seasonal patterns of sea-surface temperature and ocean color around the Galápagos: regional and local influences. *Deep-Sea Research II*, **51**, 43–57.

- Palastanga, V., van Leeuwen, P.J., Schouten, M.W. & de Ruijter, W.P.M. (2007) Flow structure and variability in the subtropical Indian Ocean: Instability of the South Indian Ocean Countercurrent. *Journal of Geophysical Research*, **112**, C01001, doi: 10.1029/2005JC003395.
- Parker, D.A.A. (1978) Observations of whales on ANARE voyages between Australia and Antarctica. *Australian Wildlife Research*, **5**, 25–39.
- Pillay, R.S.N. (1926) List of cetaceans taken in Travancore from 1902–1925. *Journal of the Bombay Natural History Society*, **31**, 815–817.
- Praderi, R. (1985) Notas sobre un varamiento de *Balaenoptera musculus* Linnaeus, 1758 (Cetacea, Balaenopteridae) en la costa de Colonia, Uruguay. *Boletín de la Sociedad Zoológica del Uruguay*, 2a. época, **3**, 16–21.
- Prater, S.H. (1915) Note on a stranded Great Indian Fin Whale *Balaenoptera indica* at Ratnagiri. *Journal of the Bombay Natural History Society*, **23**, 576–577.
- Puddicombe, R.A. (1986) Australia. Progress report on cetacean research, June 1984 to May 1985. *Report of the International Whaling Commission*, **36**, 143–149.
- Quartly, G.D., Buck, J.J.H., Srokosz, M.A. & Coward, A.C. (2006) Eddies around Madagascar—the retroflexion reconsidered. *Journal of Marine Systems*, **63**, 115–129.
- Ramirez, P.A. (1985) Peru. Progress report on cetacean research, October–December 1983. *Report of the International Whaling Commission*, **35**, 176–177.
- Rankin, S., Ljungblad, D., Clark, C. & Kato, H. (2005) Vocalisations of Antarctic blue whales, *Balaenoptera musculus intermedia*, recorded during the 2001/2002 and 2002/2003 IWC/SOWER circumpolar cruises, Area V, Antarctica. *Journal of Cetacean Research and Management*, **7**, 13–20.
- Rao, R.R., Girish Kumar, M.S., Ravichandran, M. & Samala, B.K. (2006) Observed mini-cold pool off the southern tip of India and its intrusion into the south central Bay of Bengal during summer monsoon season. *Geophysical Research Letters*, **33**, L06607, doi:10.1029/2005GL025382.
- Rayner, G.W. (1940) Whale marking: progress and results to December 1939. *Discovery Reports*, **19**, 245–284.
- Reilly, S.B. & Thayer, V.G. (1990) Blue whale (*Balaenoptera musculus*) distribution in the Eastern Tropical Pacific. *Marine Mammal Science*, **6**, 265–277.
- Rennie, S.J., McCauley, R.D. & Pattiaratchi, C.B. (2006) Thermal structure above the Perth Canyon reveals Leeuwin Current, Undercurrent and weather influences and the potential for upwelling. *Marine and Freshwater Research*, **57**, 849–861.
- Reuter, W. (1919) An account of a finback-whale (*Balaenoptera spec.*) which was washed ashore on the south-coast of the Preanger Regencies in December 1916. *Treubia*, **1(3)**, 101–138, pls. 1–20.
- Reyes, L.M. (2006) Cetaceans of Central Patagonia, Argentina. *Aquatic Mammals*, **32**, 20–30.
- Rice, D.W. (1998) *Marine mammals of the world: systematics and distribution*. Allen Press Inc., Lawrence, KS.
- Risting, S. (1928) Whales and whale foetuses: Statistics of catch and measurements collected from the Norwegian Whalers' Association 1922–25. *Rapports et Procès-Verbaux des Réunions*, **50**, 1–122.
- Romero, S.I., Piola, A.R., Charo, M. & Garcia, C.A.E. (2006) Chlorophyll-*a* variability off Patagonia based on SeaWiFS data. *Journal of Geophysical Research*, **111**, C05021, doi:10.1029/2005JC003244.
- Rudolph, P., Smeenk, C. & Leatherwood, S. (1997) Preliminary checklist of cetacea in the Indonesian Archipelago and adjacent waters. *Zoologische Verhandelingen*, **312**, 1–48.
- Samaran, F., Cansi, Y., Ruzié, G. & Guinet, C. (2006) Preliminary results of large whale calls recorded at low latitudes in the southwestern Indian Ocean. Paper SC/58/O2 presented to the IWC Scientific Committee, June 2006, St Kitts and Nevis, WI [Available from IWC, The Red House, 135 Station Road, Impington, Cambridge, CB4 9NP, U.K.]
- Sathasivam, K. (2000) A catalogue of Indian marine mammal records. *Blackbuck*, **16(2&3)**, 23–74.
- Siddiqi, M.S.U. (1968) The great Indian rorqual *Balaenoptera musculus* (Linn.) near Pasni (Mekran coast), West Pakistan. *Journal of the Bombay Natural History Society*, **65**, 772.
- Siegel, V. (2005) Distribution and population dynamics of *Euphausia superba*: summary of recent findings. *Polar Biology*, **29**, 1–22.
- Širović, A., Hildebrand, J.A., Wiggins, S.M., McDonald, M.A., Moore, S.E. & Thiele, D. (2004) Seasonality of blue and fin whale calls and the influence of sea ice in the Western Antarctic Peninsula. *Deep-Sea Research II*, **51**, 2327–2344.
- Širović, A. (2006) Blue and fin whale acoustics and ecology off Antarctic Peninsula. PhD dissertation. University of San Diego, San Diego.
- Slijper, E.J. (1962) *Whales*. Hutchinson, London.
- Slijper, E.J., van Utrecht, W.L. & Naaktgeboren, C. (1964) Remarks on the distribution and migration of whales, based on observations from Dutch ships. *Bijdragen Tot De Dierkunde*, **34**, 93 pp.
- Small, J.A. & Small, G.J. (1991) Cetacean observations from the Somali Democratic Republic, September 1985 to May 1987. *UNEP Marine Mammal Technical Report*, **3**, 179–210.
- Smith, B.D., Hpone Thant, U., Min Lwin, J. & Shaw, C.D. (1997) Investigation of cetaceans in the Ayeyarwady River and northern coastal waters of Myanmar. *Asian Marine Biology*, **14**, 173–194.

- Smith, W.H.F. & Sandwell, D.T. (1997) Global sea floor topography from satellite altimetry and ship depth soundings. *Science*, **277**, 1956–1962.
- Somasekharan Nair, K.V. & Jayaprakash, A.A. (1987) On a blue whale *Balaenoptera musculus* stranded at Chappa beach, Narakkal, Cochin, southwest coast of India. *Marine Fisheries Information Service Technical & Extension Series*, **71**, 17–18.
- Stafford, K.M., Bohnenstiehl, D.R., Chapp, E. & Tolstoy, M. (2005) Location, location, location: acoustic evidence suggests three geographic stocks of ‘pygmy’ blue whales in the Indian Ocean. Abstract. 16th Biennial Conference on the Biology of Marine Mammals, San Diego, California, 12–16 December 2005. pp 266–267.
- Stafford, K.M., Bohnenstiehl, D.R., Tolstoy, M., Chapp, E., Mellinger, D.K. & Moore, S.E. (2004) Antarctic-type blue whale calls recorded at low latitudes in the Indian and eastern Pacific Oceans. *Deep-Sea Research I*, **51**, 1337–1346.
- Stafford, K.M., Nieuwkerk, S.L. & Fox, C.G. (1999) Low-frequency whale sounds recorded on hydrophones moored in the eastern tropical Pacific. *Journal of the Acoustical Society of America*, **106**, 3687–3698.
- Stollman, S., Bell, M., Denize, S., Lutzke, B. & Kelles-Krause, D. (2005) The conservation treatment of Canterbury Museum’s blue whale skeleton. *Records of the Canterbury Museum*, **19**, 35–60.
- Strindberg, S. & Burt, L. (2004) *IWC Database-Estimation Software System (DESS) User Manual*. University of St Andrews, St Andrews. 450 pp.
- Thiele, D. (2005) Report of an opportunistic survey for Irrawaddy dolphins, *Orcaella brevirostris*, off the Kimberley Coast, northwest Australia. Paper SC/57/SM2 presented to the IWC Scientific Committee, June 2005, Ulsan, South Korea [Available from IWC, The Red House, 135 Station Road, Impington, Cambridge, CB4 9NP, U.K.]
- Tynan, C. (1996) Characterization of oceanographic habitat of cetaceans in the Southern Indian Ocean between 82°–115°E: cruise report from World Ocean Circulation Experiment (WOCE) 18S and 19S. *NOAA Technical Memorandum NMFS-AFSC*, **64**, 53pp.
- Tynan, C.T. (1998) Ecological importance of the Southern Boundary of the Antarctic Circumpolar Current. *Nature*, **392**, 708–710.
- Valdivia, J., Landa, A., Ramirez, P. & Franco, F. (1983) Peru progress report on cetacean research April 1981 to April 1982. *Report of the International Whaling Commission*, **33**, 237–241.
- Van Waerebeek, K., Pastene, L.A., Alfaro-Shigueto, J., Brito, J.L. & Mora-Pinto, D. (1997) The status of the blue whale *Balaenoptera musculus* off the west coast of South America. Paper SC/49/SH9 presented to the IWC Scientific Committee, September 1997, Bournemouth, U.K. [Available from IWC, The Red House, 135 Station Road, Impington, Cambridge, CB4 9NP, U.K.]
- Venkataraman, G. & Girijavallabhan, K.G. (1966) On a whale washed ashore at Calicut. *Journal of the Marine Biological Association of India*, **8**(2), 373–374.
- Venkataramanujam, K., Paulraj, S. & Ramadhas, V. (1984) Stranding of the blue whale, *Balaenoptera musculus*, in the West Coast of India. *Investigations on Cetacea*, **16**, 76–79.
- Wade, L.S. & Friedrichsen, G.L. (1979) Recent sightings of the blue whale, *Balaenoptera musculus*, in the northeastern tropical Pacific. *Fishery Bulletin*, **76**, 915–919.
- Waite, E.R. (1912) Notes on three notable whales. *Records of the Canterbury Museum*, **1**, 323–328, plates LIX–LXIII.
- Waite, E.R. (1926) A young blue whale. *Records of the South Australian Museum*, **3**(2), 135–144.
- Wakefield, N.A. (1967) Whales and dolphins recorded for Victoria. *Victorian Naturalist*, **84**, 273–281.
- Wheeler, J.F.G. (1946) Observations on whales in the South Atlantic Ocean in 1943. *Proceedings of the Zoological Society of London*, **116**, 221–224.
- Whitehead, H., Gilligan, P., Smythe, C., Weilgart, L. & Converse, C. (1983) WWF/IUCN Indian Ocean sperm whale project, interim report, Oct–Dec 1983. 36pp.
- Wray, P. & Martin, K.R. (1983) Historical whaling records from the Western Indian Ocean. *Report of the International Whaling Commission (Special Issue)*, **5**, 213–241.
- Yablokov, A.V. (1994) Validity of whaling data. *Nature*, **367**, 108.
- Yablokov, A.V., Zemsky, V.A., Mikhalev, Y.A., Tormosov, V.V. & Berzin, A.A. (1998) Data on Soviet whaling in the Antarctic in 1947–1972 (population aspects). *Russian Journal of Ecology*, **29**, 38–42.
- Yochem, P.K. & Leatherwood, S. (1985) Blue whale (*Balaenoptera musculus* Linnaeus, 1758). In: *Handbook of Marine Mammals, Vol 3: The Sirenians and Baleen Whales* (Ed. by S.H. Ridgway & R. Harrison), pp. 193–240. Academic Press, London.
- Zemsky, V.A. & Sazhinov, E.G. (1982) Distribution and current abundance of pygmy blue whales. In: *Marine Mammals* (Ed. by V.A. Arsen’ev), pp. All-Union Research Institute of Marine Fisheries and Oceanography, Moscow. Translated by V.S. Gurevich in February 1994, translation edited by M.A. Donahue and R.L. Brownell, Jr., as Southwest Fisheries Science Center Administrative Report LJ-94-02.
- Zerbini, A.N., Secchi, E.R., Siciliano, S. & Simões-Lopes, P.C. (1997) A review of the occurrence and distribution of whales of the genus *Balaenoptera* along the Brazilian coast. *Report of the International Whaling Commission*, **47**, 407–417.

Table 1. Distribution of group sizes in sightings data, based on reports where group sizes were recorded. Groups may have been either schools or feeding aggregations, depending on the source. The largest groups were 10, 12, 15, 18, 20 and 60.

Group size	Frequency	Percentage
1	2,183	65.2%
2	822	24.6%
3	205	6.1%
4	62	1.9%
5	37	1.1%
6	15	0.4%
7	6	0.2%
8	6	0.2%
9	4	0.1%
>=10	6	0.2%
Total	3,346	100.0%

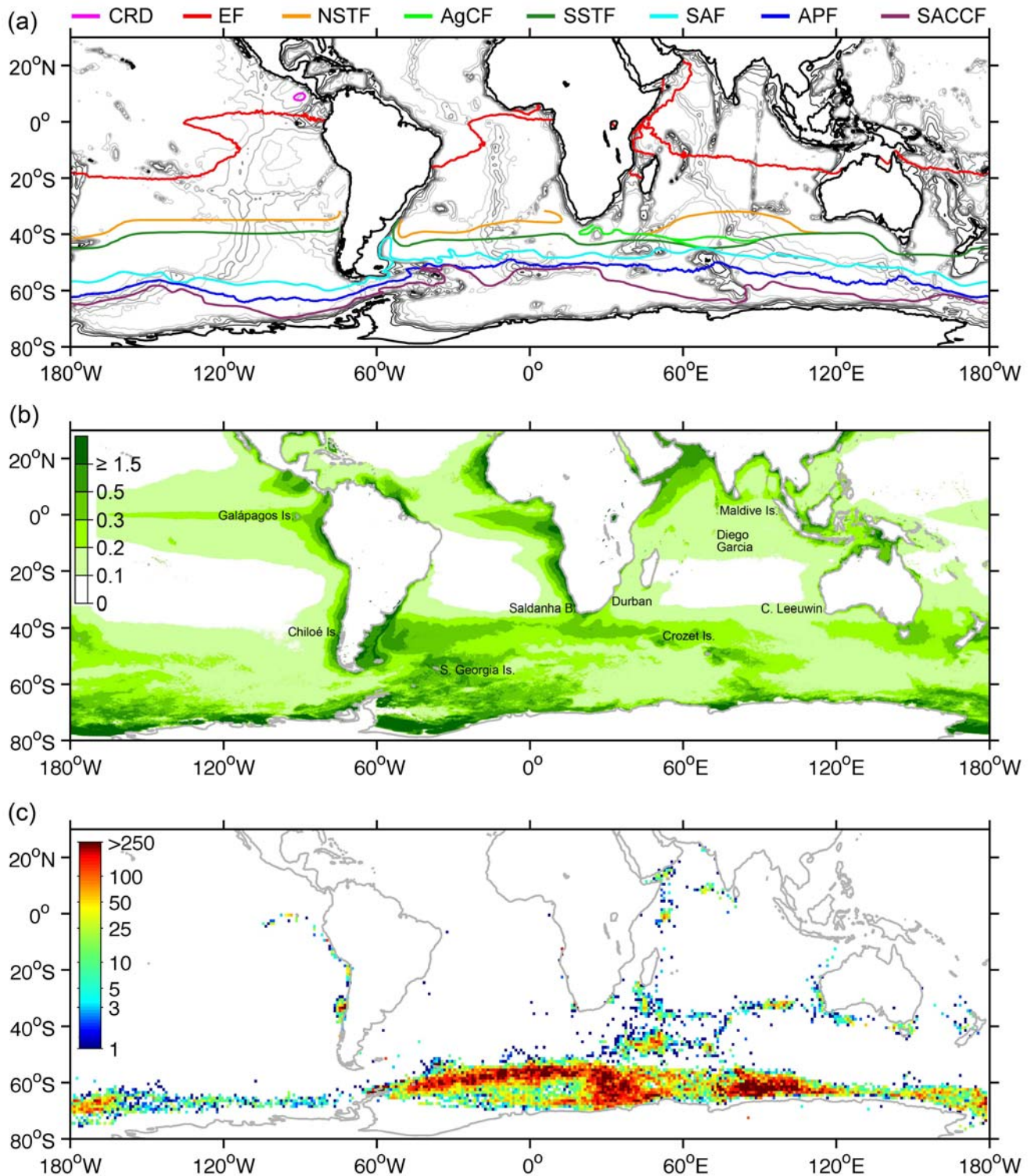


Figure 1. (a) Bathymetry and mean location of major oceanographic features in the study area (see text for details). From north to south: CRD = Costa Rica Dome, EF = Equatorial Front, NSTF = North Subtropical Front, AgCF = Agulhas Current Front, SSTF = South Subtropical Front, SAF = Subantarctic Front, APF = Antarctic Polar Front, and SACCF = Southern Antarctic Circumpolar Current Front. (b) Annual mean phytoplankton chlorophyll-*a* concentrations in $\text{mg}\cdot\text{m}^{-3}$ from SeaWiFS (4 September 1997 – 30 September 2006). (c) Catches of blue whales in the IWC database grouped into $1^\circ \times 1^\circ$ squares. Catches from land stations were generally all assigned to the same square.

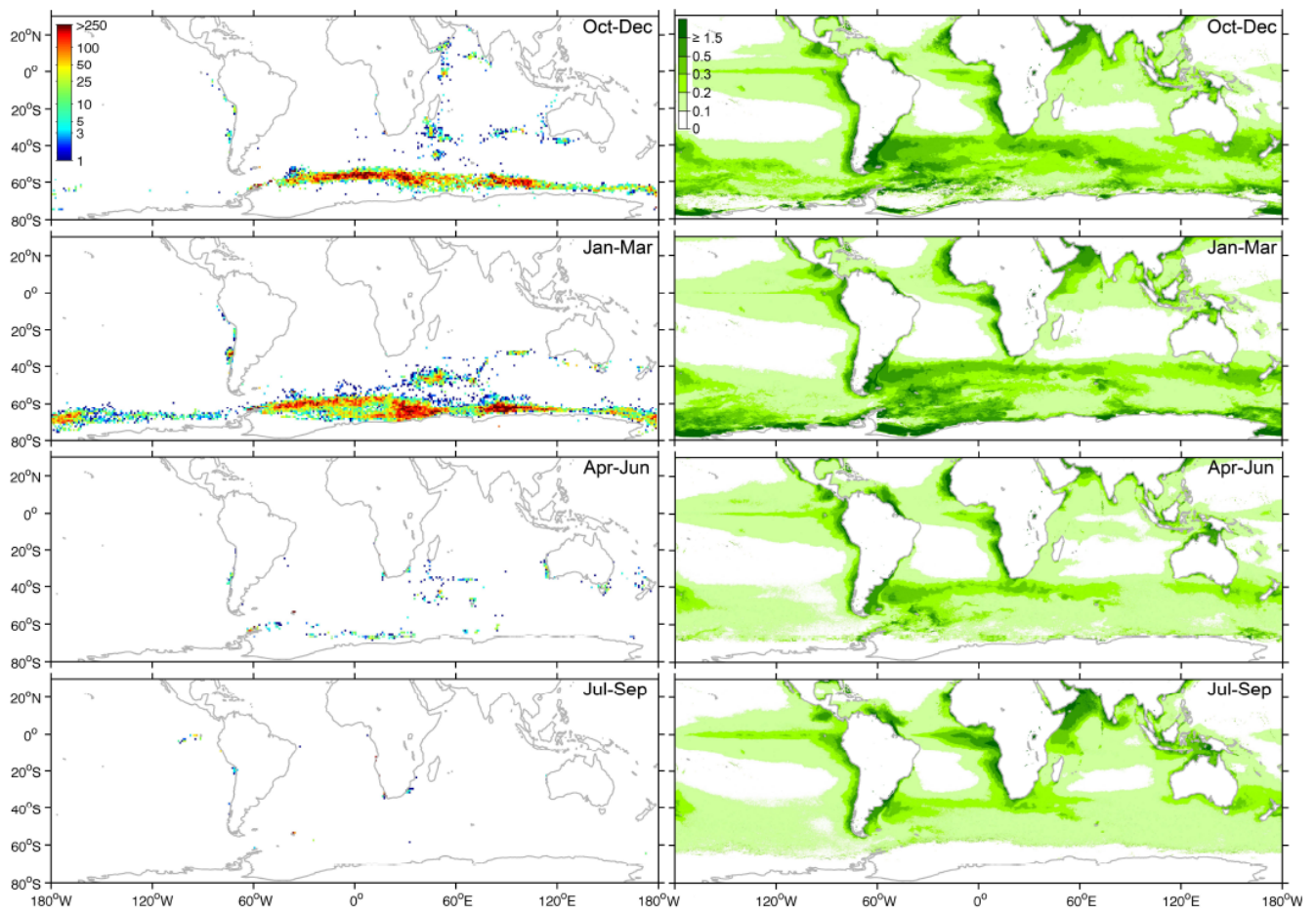


Figure 2. Three-monthly seasonal patterns in catches (grouped into $1^{\circ} \times 1^{\circ}$ squares) and mean seasonal phytoplankton chlorophyll-a concentrations in mg.m^{-3} . Sources are the same as Figure 1.

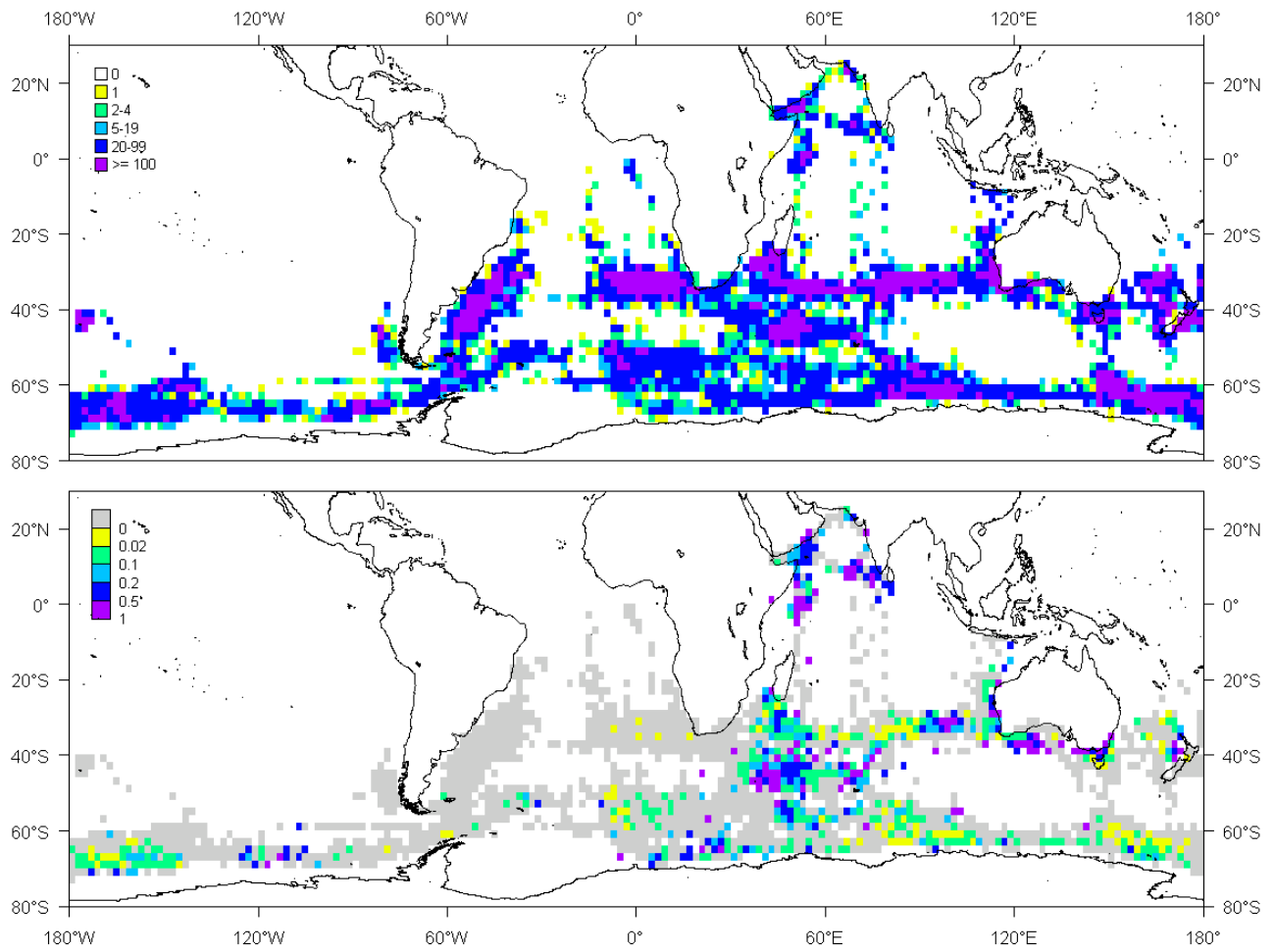


Figure 3. Soviet catches during 1958–1973 in the study area. Top panel: number of catches of all large cetaceans in each 2°×2° square (a rough measure of total catch effort). Bottom panel: proportion of large cetacean catches in each 2°×2° square that were blue whales.

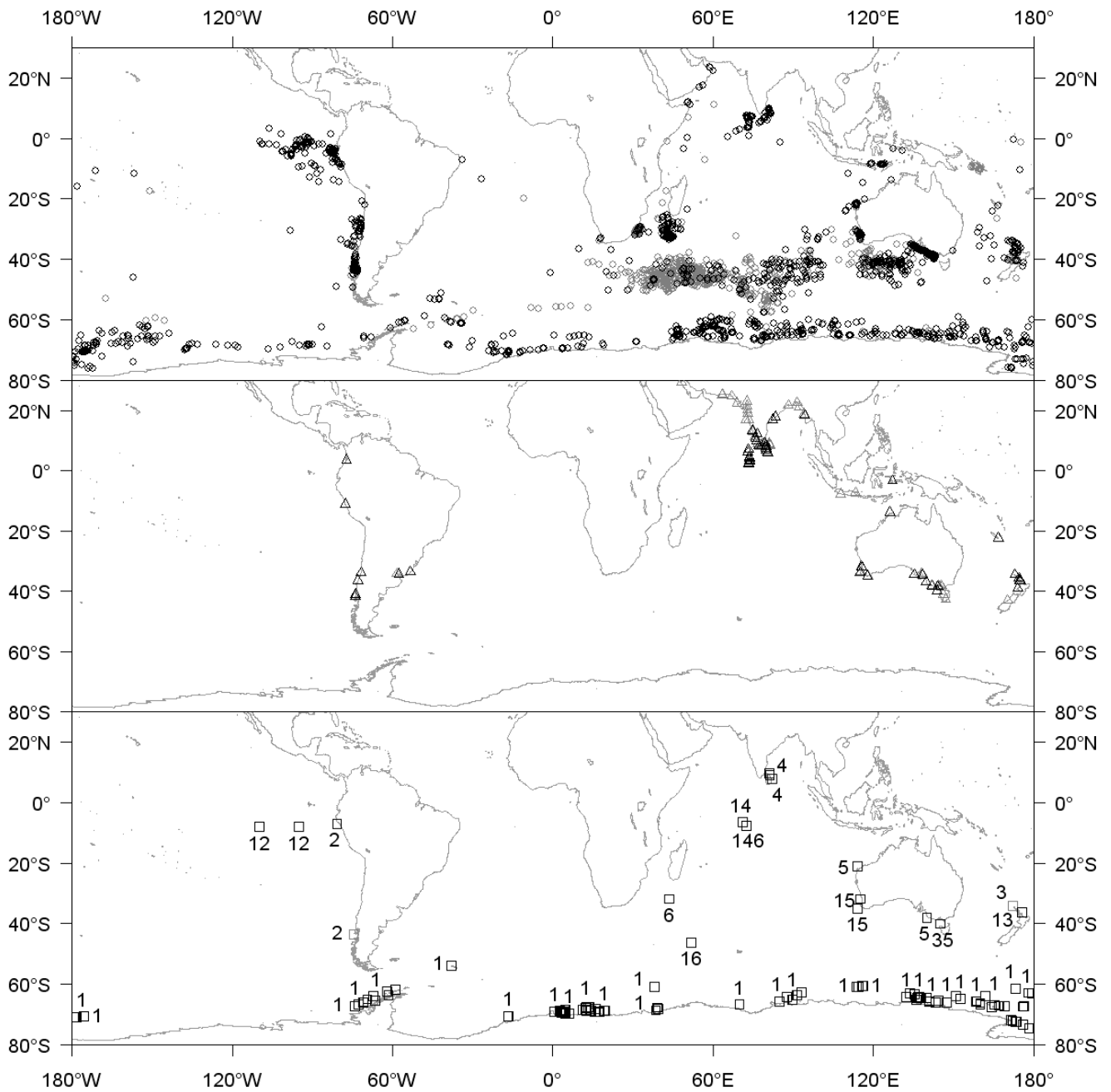


Figure 4. Positional information from (top to bottom) sightings (o); strandings (Δ); and acoustic recordings (\square). Grey is used for positions \leq 1973 and black for $>$ 1973. Acoustic locations are annotated with the call type using numbers: Antarctic (1), South-east Pacific (2), New Zealand (3), Sri Lanka (4), Australia (5), and Madagascar (6); these numbers are concatenated if two or more call types were recorded at a single location.

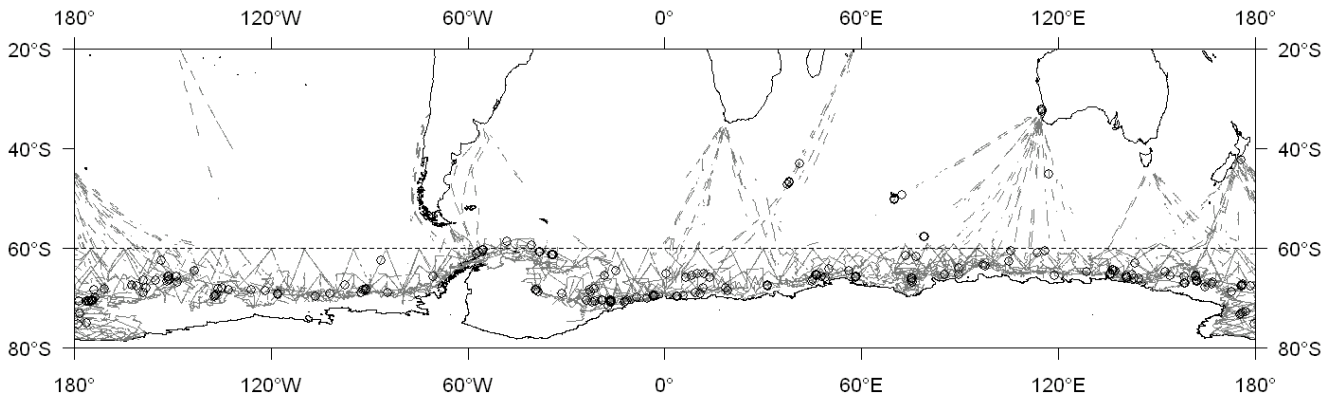


Figure 5. IDCR/SOWER vessel tracks (lines) and blue whale sightings (o) between 1978 and 2005. Only primary search effort is plotted, but blue whales sighted both on-effort and off-effort are plotted. The intended surveys were generally conducted south of 60°S (dashed line) but additional primary effort was recorded further north during transits to the survey areas.

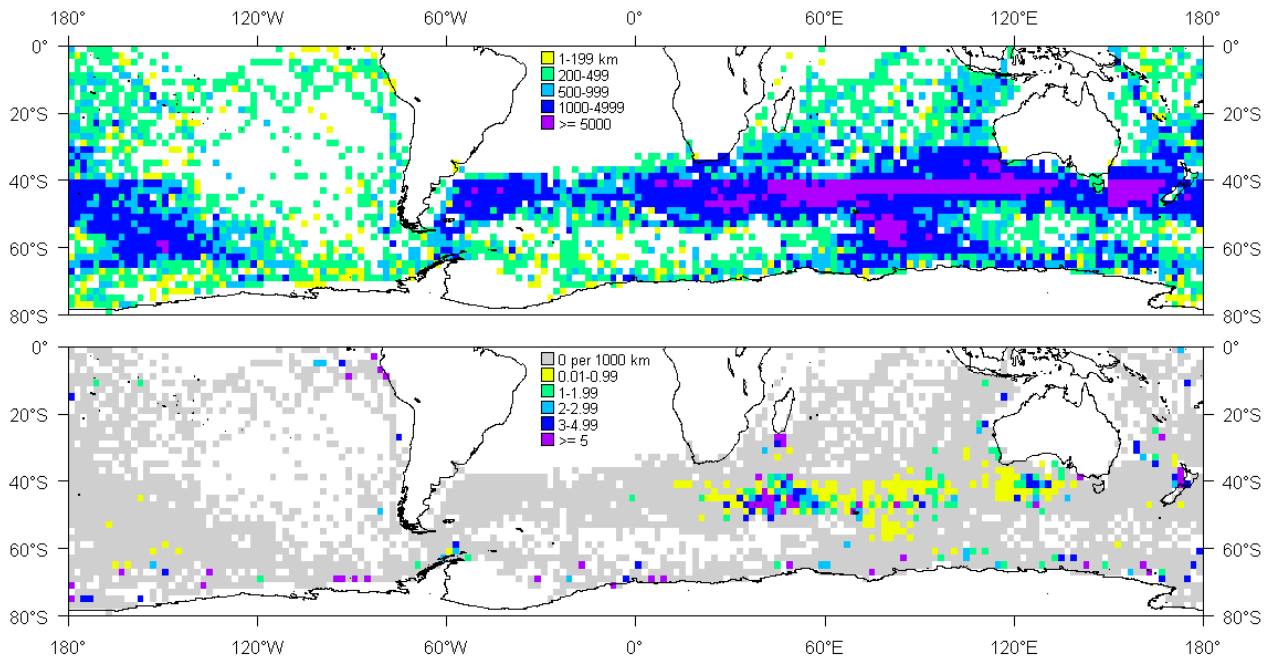


Figure 6. Japanese Scouting Vessels (JSV) effort in km (top panel), and sightings per unit effort (bottom panel) in each 2°×2° sector in the Southern Hemisphere. The JSV database covers the period from 1965 to 1987 but does not include effort and sightings for the northern Indian Ocean.

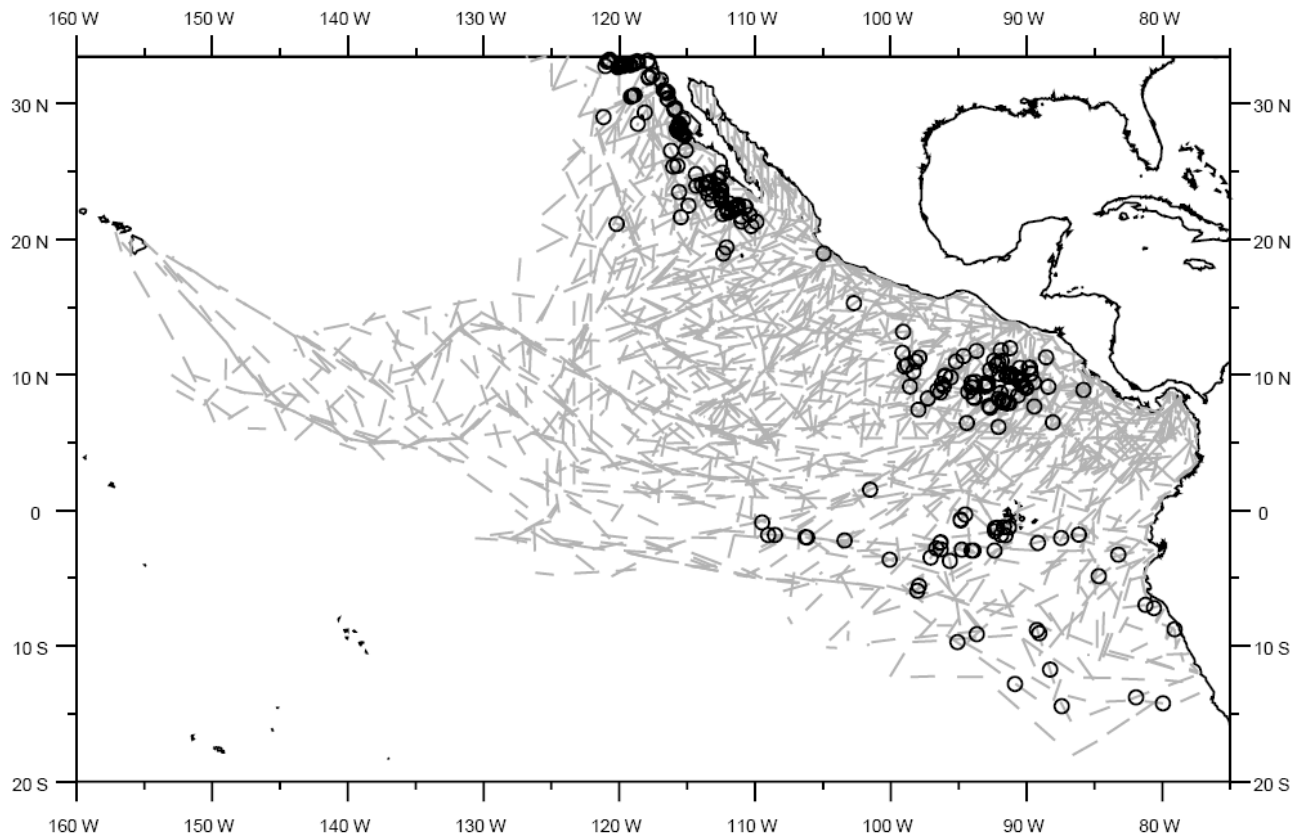


Figure 7. Southwest Fisheries Science Center surveys between 1986 and 2006 in the eastern tropical Pacific. Grey lines indicate primary search effort, while circles show both on-effort and off-effort sightings of blue whales. Only sightings and effort south of 5°N were included in the analyses presented in this paper.

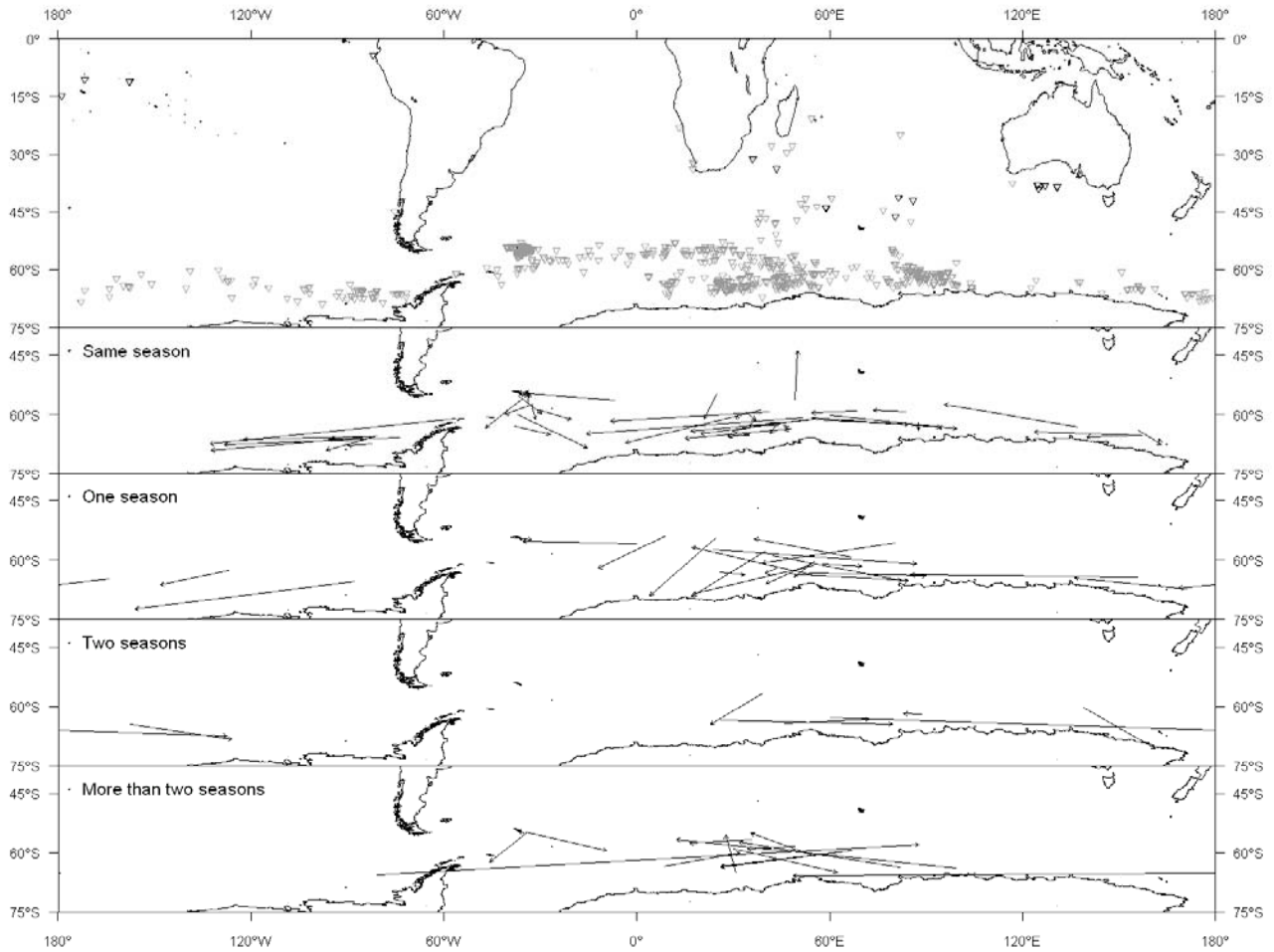


Figure 8. Discovery mark placement (triangles, top panel) and recoveries of Discovery marks (arrows, other panels) of blue whales. The top panel shows the positions of all marks (gray ≤ 1973 , black > 1973), panels below zoom into a narrower latitudinal range to show all mark-recaptures. Mark-recapture pairs are split between those recovered in the same season, the following season, two seasons later and more than two seasons after the mark. The shortest mark-recapture path sometimes crosses the international dateline. Only the same-season recovery at $43^{\circ}55'S$ $50^{\circ}02'E$ was identified as a pygmy blue whale.

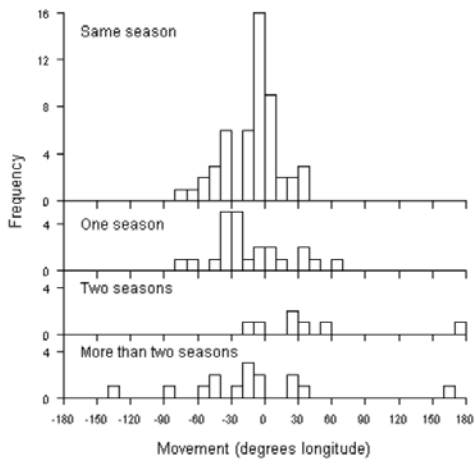


Figure 9. Longitudinal movement between marks and recoveries of blue whales in the same season, after one year, two years and more than two years. Positive numbers indicate eastward movement and negative numbers westward movement.

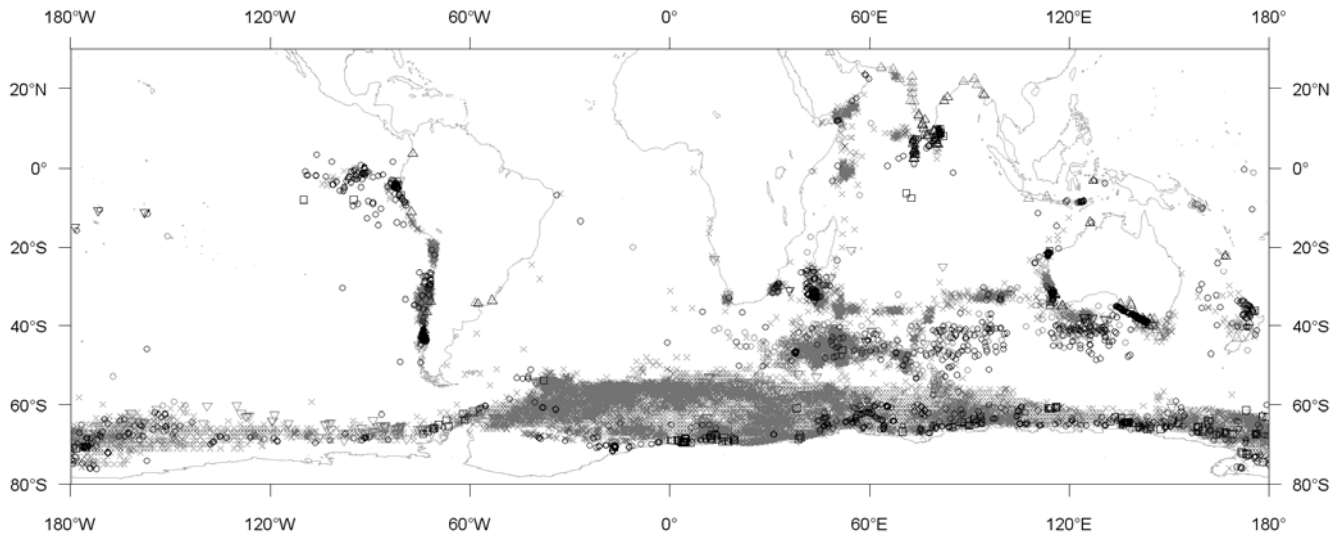


Figure 10. Distribution of blue whales in all months based on catches (x), sightings (o), strandings (Δ), acoustic records (□) and Discovery mark positions (∇). Grey is used for positions ≤ 1973 and black for > 1973 .

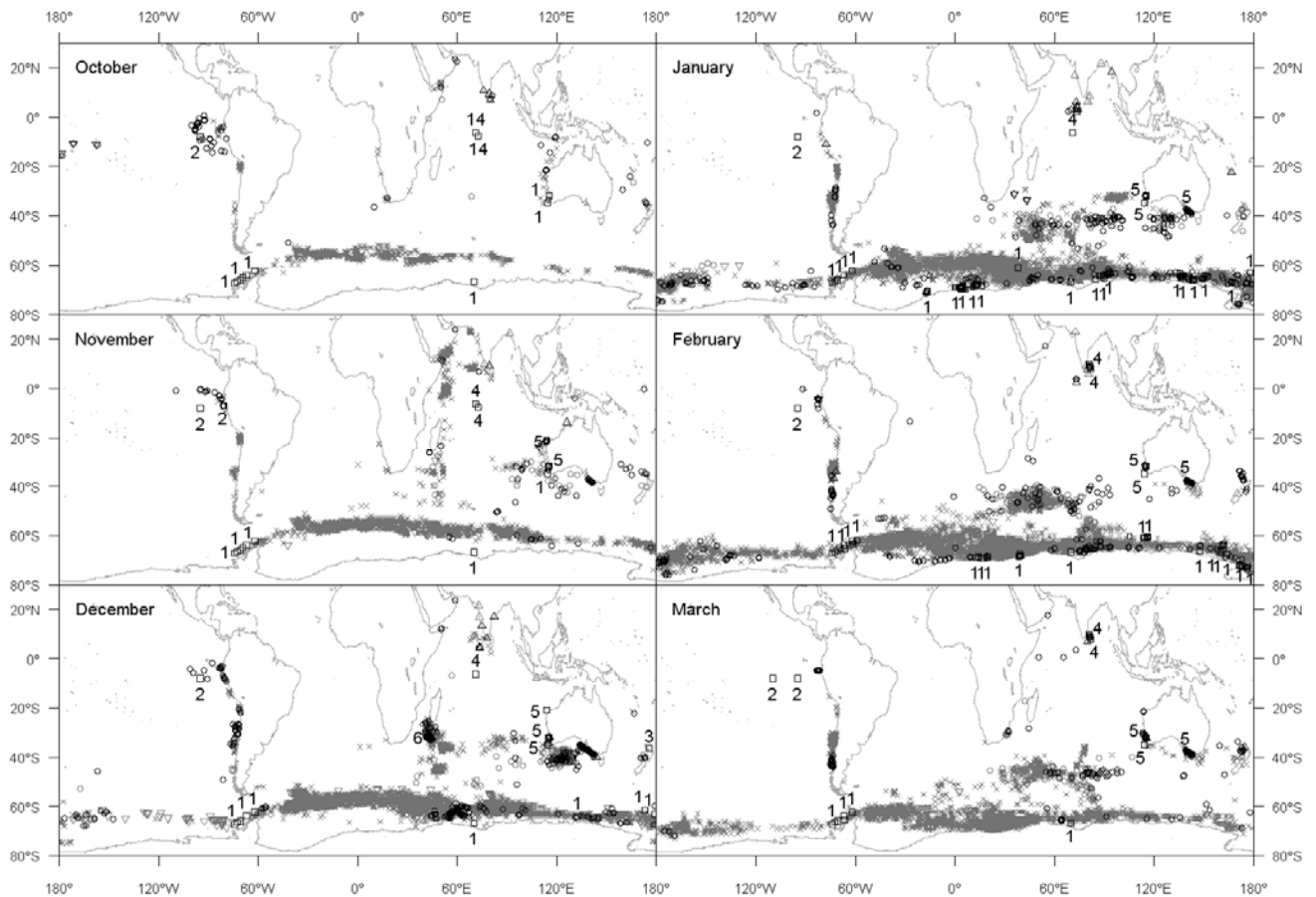


Figure 11. Monthly distribution of blue whales during October to March based on catches (x), sightings (o), strandings (Δ), acoustic records (□) and Discovery mark positions (∇). Grey is used for positions ≤ 1973 and black for > 1973 . Acoustic locations are annotated with the call type using numbers: Antarctic (1), South-east Pacific (2), New Zealand (3), Sri Lanka (4), Australia (5), and Madagascar (6); these numbers are concatenated when two or more call types were recorded at a single location.

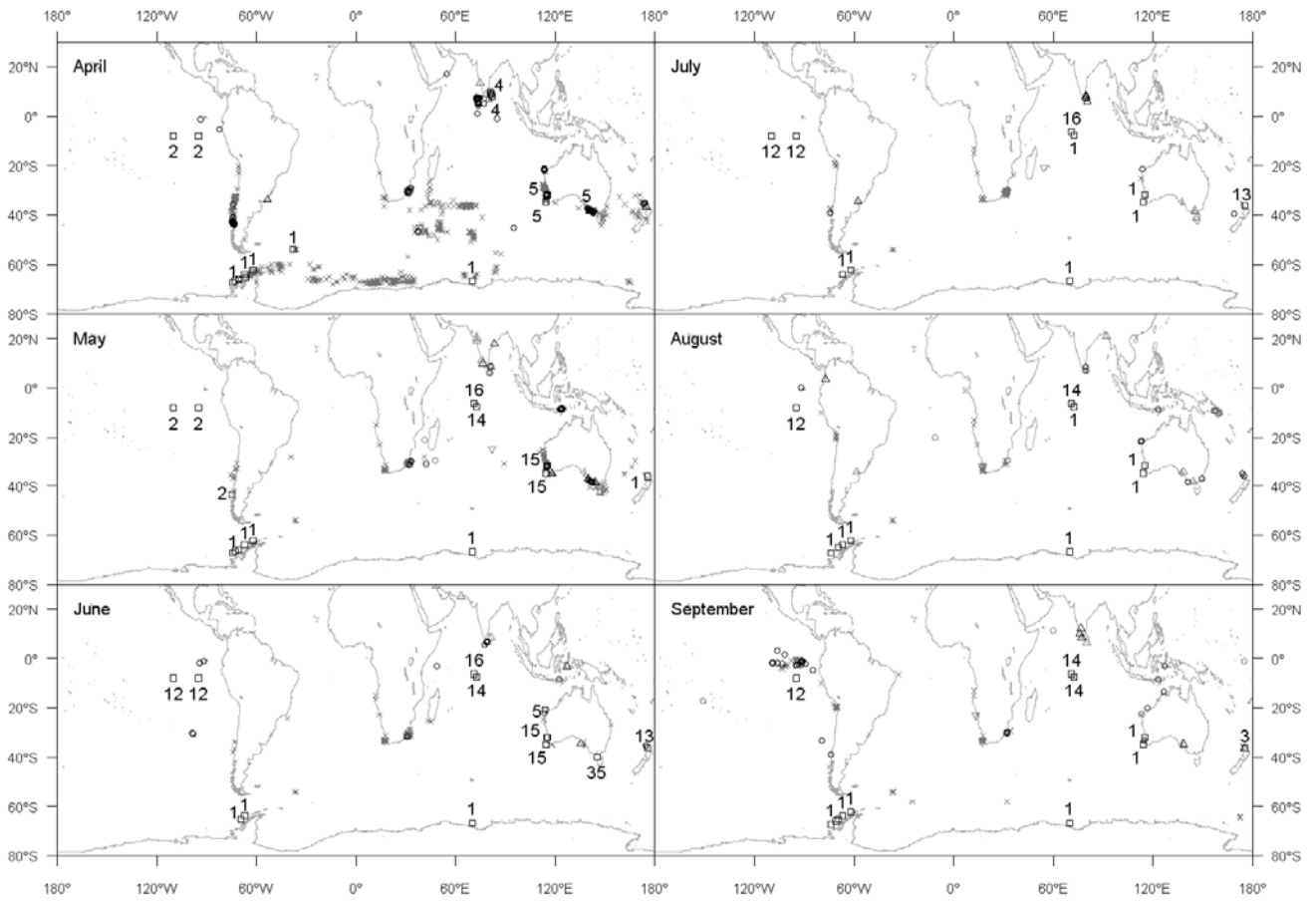


Figure 12. Monthly distribution of blue whales during April to September based on catches (x), sightings (o), strandings (Δ), acoustic records (\square) and Discovery mark positions (∇). Grey is used for positions ≤ 1973 and black for > 1973 . Acoustic locations are annotated with the call type using numbers: Antarctic (1), South-east Pacific (2), New Zealand (3), Sri Lanka (4), Australia (5), and Madagascar (6); these numbers are concatenated when two or more call types were recorded at a single location.

Appendix 1. List of sources used to obtain sightings data together with the number of associated records, the listed number of groups sighted and the number of whales sighted, alphabetized by source name. A “group” could be either a school or feeding aggregation depending on the source. Listed sightings are those with associated positions, many papers noted additional sightings without positions. Latitudes and longitudes are given in whole degrees and rounded to encompass the study region. Where sources are “unpubl.” this means “unpublished data”. For totals, each record contains ≥ 1 group and ≥ 1 whale. Mean group size is based on all records containing both the number of groups and number of whales. Total effort in days is based on the assumption that 10 hours of effort equals one day. For records from the eastern tropical Pacific only the sightings and effort south of 5°N were included.

Source	Region	Dates	Effort	Records	Groups	Whales	Ave group size
Aguayo (1974)	Coastal Chile 43–46°S	Mar, Dec 1966	Not recorded	2	2	9	3.67
Aguayo <i>et al.</i> (1998)	SE Pacific 26–34°S 91–111°W	Sep 1994, Jun 1995	770.5 hours	3	3	6	2.00
Alling <i>et al.</i> (1991)	East coast, Sri Lanka	Jan–Apr, 1983–1984	890 hours (49 sightings)	138	-	138	-
Anderson (2005), R.C. Anderson unpubl.	Maldives	Nov–Apr, 1999–2004	161 days (11 sightings)	14	14	15	1.07
Anonymous (1987a)	Oman	28 Oct 1985	Opportunistic	1	1	2	2.00
Baker, A.N. unpubl.	New Zealand 171–177°E 33–42°S	1981, 1984, 1998–2004	Opportunistic	31	31	40	1.29
Ballance <i>et al.</i> (1996), Ballance and Pitman (1998)	Indian Ocean	Mar–Jul 1995	92 days; 403.9 hours; 9,783.9 km	17	17	27	1.59
Ballance <i>et al.</i> (2001)	Maldives 3–8°N 72–74°E	Apr 1998	20 days; 155.5 hours; 1,700 km	4	4	4	1.00
Best <i>et al.</i> (2003)	Madagascar Plateau 25–35°S 40–45°E	Dec 1996	23 days; 2,859.9 km	103	103	131	1.27
Best, P.B. unpubl.	Saldanha Bay, South Africa	1964–2003	Opportunistic	4	4	4	1.00
Best, P.B. unpubl.	Durban, South Africa	Mar–Sep, 1968–1975	5,545 boat days + 1,592,385 aerial km	62	62	71	1.15
Blokhin (1981)	Southern Australia 29–45°S 113–148°E	2–28 Mar 1979	5,839 km	7	7	23	3.29
Borsa and Hoarau (2004)	New Caledonia, 22°S 167°E	29 Dec 2001–27 Jan 2002	Opportunistic	1	1	1	1.00
Borsa, P. unpubl.	Kerguelen Is., 48°S 71°E	Mar 1985	Opportunistic	1	1	1	1.00
Borsa, P. unpubl.	Indonesia, 2°N–11°S 122–137°E	1995–2004	270 hours	2	2	7	3.50
Bowles <i>et al.</i> (1994)	Heard Island 53–54°S 74–75°E	19 Jan–3 Feb 1991	162.75 hours; 2,412 km	2	2	2	1.00
Burton, C.L.K. unpubl.	Geographe Bay, Australia 34°S 115°E	Sep–Dec, 1994–2005	750 days; ~2,600 hours (372 whales)	126	126	270	2.14
Bannister, J.L. & Burton, C.L.K. unpubl.	Western Australia 31–33°S 115°E	Nov–May, 2000–2005	12,209.2 aerial km (227 sightings)	252	252	282	1.12
Cabrera, Carlson & Galletti Vernazzani (2005), Galletti NW Chiloé Island, Chile 40–43°S 73–75°W Vernazzani <i>et al.</i> (2005), Galletti Vernazzani <i>et al.</i> (2006)	New Zealand 38°S 141°E	Feb–Apr 2004–2006	108.3 hours; 1,714.2 km (138 sightings)	184	184	321	1.74
Cawthorn (1983)	New Zealand 40°S 139°E	Feb 1982	Opportunistic	1	1	1	1.00
Cawthorn (1988)	New Zealand 40°S 139°E	Jul–Aug 1986	Opportunistic	1	3	21	7.00
Chittleborough (1953)	Western Australia 23°S 114°E	Sep–Oct 1952	Not recorded	1	1	1	1.00
Clarke and Ruud (1954)	Antarctic 53–62°S 47°W–15°E	Nov–Dec 1953	27 days	12	-	35	-
Clarke <i>et al.</i> (1978)	Chile 28–37°S	Nov–Dec 1964	3,876 km	3	3	4	1.33
Corbett (1994)	S Indian Ocean, Mauritius	Jul 1991–Jul 1992	16 days	8	8	9	1.13
Cummings and Thompson (1971)	Guafo Island, Chile 44°S 74°W	30–31 May 1970	Opportunistic	1	-	4	-
da Rocha (1983)	Costinha, Brazil	1966–1981	2,771 days; 46,273 hours; ~943,000 km	3	3	-	-
de Boer (2000)	Antarctic, Indian Ocean	Nov 1999–Jan 2000	22,920 km	1	5	10	2.00
Donovan (1984a, b)	Peru 10°S–10°N 78–110°W	Nov–Dec 1982	16,437 km	12	12	16	1.33
Dyer, B.M., pers. comm.	Marion Island 47°S 38°E	Apr 2005	Opportunistic	3	3	8	2.67
Eyre (1995)	Sydney, Australia to Suez Canal	May–Jul 1993	45 days; 16,974 km	4	4	4	1.00
Eyre (2000)	Mauritius to Singapore	April 2000	15 days; 6,130 km	1	1	1	1.00

Findlay <i>et al.</i> (1998)	Chile 18–53°S	Dec 1997–Jan 1998	389 h 58 min; 8,248.6 km	40	40	48	1.20
Gambell, Best & Rice (1975)	SW Indian Ocean 20–42°S 30–67°E	Nov 1973–Feb 1974	13,271 km	7	7	15	2.14
Gill (2002), Gill, P.C. unpubl.	Victoria, Australia 37–40°S 139–144°E	Feb 1998–May 2002	38,996 aerial km (290 sightings)	358	358	532	1.49
Gill, P.C. and Morrice, M.G. unpubl.	Victoria, Australia 35–40°S 134–144°E	Dec 2002–Feb 2006	Unknown	729	729	1,013	1.39
Gordon, Papastavrou & Alling (1986)	Trincomalee Bay, Sri Lanka 8°N 81°E	Mar 1984	Opportunistic	6	-	6	-
Gunaratna, Obeyesekera & Hahn (1985)	SW Sri Lanka 5–7°N 79–81°E	May 1985	6 days	1	1	2	2.00
Haase, B. pers. comm.	Galapagos Islands	28 Feb 2003	Opportunistic	1	1	1	1.00
Hucke-Gaete (2003), Hucke-Gaete <i>et al.</i> (2004; 2005; 2006), Hucke-Gaete, R. unpubl.	Coastal Chile 29–53°S	Jan–Dec 1998, 2001–2006; but Jan–Apr	mostly 15.72 aerial hours (23 sightings); 625.36 boat hours (118 sightings)	158	158	429	2.72
Hyrenbach, D.pers. comm.	S Indian 47°S 67°E	Feb 2004	Opportunistic	2	2	2	1.00
IDCR/SOWER, IWC unpubl.	Surveys south of 60°S, plus transits	Dec–Mar, 1978–2005	237,988.1 km (124 sightings)	242	242	490	2.01
Ilangakoon, A.D. unpubl.	North-west Sri Lanka 6–9°N 79–82°E	1987, 1994, 2003–2005	63 hr 49 min; 617.2 km (1 sighting)	15	15	25	1.67
JARPA, Matsuoka <i>et al.</i> (2006), Matsuoka, K. and Nishiwaki, S. unpubl.	Antarctic and S Indian, 40°E–180°–140°W, of 60°S	mostly S Nov–Mar, 1989–2005	423,928 km (143 sightings)	253	253	432	1.71
Jenner, K.C.S., Jenner, M-N.M. and Sturrock, V.J. unpubl.	Western Australia, 20–33°S 113–117°E	1993, Feb 2000–Apr 2005	1612 hr; 24,572 km	455	455	548	1.20
Joergensen, M. unpubl.	Chile 43–44°S, 49°S	Feb 2004	1 day	10	10	15	1.50
JSV, Miyashita <i>et al.</i> (1995), Miyashita, T. unpubl.	Southern Hemisphere	Dec 1965–Feb 1987	4,827,370 km (2,520 whales)	799	-	2,410	-
Kahn (2000; Kahn, 2002)	Komodo, Indonesia	Sep–Oct 2000, Oct 2001	227.25 hours; 4,430.7 km	3	3	3	1.00
Kahn (2005)	Solor-Alor, Indonesia	Apr–May 2005	79.75 hours; 1,162.9 km	8	8	-	-
Kasuya and Wada (1991)	Equatorial Indian Ocean	Mar 1982	4,295 km	2	-	8	-
Kato <i>et al.</i> (1996)	Southern Australia 31–45°S 113–149°E	Dec–Jan 1996	~44 days	52	52	60	1.15
Leatherwood (1986)	Antarctic, S. Indian	1839–1874, 1979	Opportunistic	14	-	-	-
Leatherwood <i>et al.</i> (1984)	Northern Indian Ocean; Sri Lanka	Apr 1983; 3 May 1983	4,023 km (1 sighting); 4 hours (9 sightings)	9	9	9	1.00
Martin, A.R. pers. comm.	West of South Georgia	10 Feb 2006	Opportunistic	2	-	16	-
Maughan, B. unpubl.	South Atlantic 0–70°S	Oct–Apr, 1997–2001	Opportunistic	4	4	-	-
Moore <i>et al.</i> (1999)	Falkland to S Georgia 51–55°S 34–58°W	Jan–Feb 1997	2,266 km	1	1	2	2.00
Ohsumi and Shigemune (1993)	Pacific 36°N–30°S 141°E–145°W	Aug–Oct 1957	13,479 km (in Southern Hemisphere)	23	23	44	1.91
Oman Whale and Dolphin Research Group, unpubl.	Oman 16–24°N 54–59°E	Oct–Apr, 1996–2005	12,417 km (4 sightings)	7	7	11	1.57
Palacios (1999a; 1999b), Palacios, D.M. unpubl.	Galapagos 3°N–3°S 90–107°W	1978–1995	190 days; 31,390 km (8 sightings)	17	17	36	2.11
Parker (1978)	Melbourne Australia to Mawson, Antarctica	Dec 1976, Feb–Mar 1977	34 days; ~136 hours	1	-	2	-
Peddemors, V.pers. comm..	Indian Ocean 37°S 10°E	20 Oct 1987	Opportunistic	1	1	2	2.00
Pitman, R.L.pers. comm.	Peru; South Georgia	Mar 1982, Dec 1985; Jan 2003	Opportunistic	17	17	52	3.06
Puddicombe (1986)	New South Wales, Australia 37°S 150°E	16 August 1984	Opportunistic	1	1	1	1.00
Ramirez (1985)	Peru, 3–6°S 81–84°E	Oct–Dec 1983	3,014.6 hours (852.2 searching)	10	-	79	-
Rudolph, Smeenk & Leatherwood (1997)	Indonesian archipelago	Jun–Sep, 1990–1993	Opportunistic	3	3	6	2.00
Slijper (1962)	Indian Ocean 11°N 60°E	23 Sep 1953	Opportunistic	1	-	40	-
Small and Small (1991)	Somalia 10–14°N 44–52°E	Aug 1985–May 1987	2,615 hours; 32,062.9 km	6	6	-	-
SWFSC cruises, T. Gerrodette unpubl.	Eastern tropical Pacific	Aug–Nov 1986–1990, 1992, 1998–2000, 2003, 2006	104,691.9 km (47 sightings)	57	57	120	2.11
Thiele (2005)	Northwest Australia 13–16°S 123–130°E	Sep 2004	125 hours	1	1	1	1.00
Thiele, D. unpubl.	Australia to Antarctic	Jul 1995–Dec 2004	~1,244 days	25	25	54	2.16

Tynan (1996)	Southern Indian Ocean 82–115°E	Dec 1994–Jan 1995	50 days	2	2	2	1.00
Valdivia <i>et al.</i> (1983)	Peru 3–8°S 80–86°W	Feb–Mar 1982	3,400 km	14	14	-	-
Van Waerebeek <i>et al.</i> (1997)	Chile 36–44°S 74–75°W	1970, 1982, 1983, 1995	Opportunistic	4	4	9	2.25
Wade and Friedrichsen (1979)	Eastern tropical Pacific	Jan–May, 1971, 1975–1976	Unknown	1	1	1	1.00
Wheeler (1946)	Central Atlantic 20°S	Aug–Sep 1943	15 days	1	1	1	1.00
Whitehead <i>et al.</i> (1983)	Sri Lanka and Maldives	Oct–Dec 1983	40 days	1	1	1	1.00
Wray and Martin (1983)	Indian Ocean 45°S–7°N 42–96°E	Oct–May, 1836–1888	Opportunistic	15	15	-	-
Total				4,383	≥4,389	≥8,058	1.56

Appendix 2. Blue whale strandings in the Southern Hemisphere and northern Indian Ocean, ordered by date of stranding. The source is the reference from which the information was obtained; if this was not the original reference then the original reference is also listed. Where species identity was uncertain the stranding was generally excluded from this list, unless later authors confirmed that it was a blue whale. Locations were generally obtained by reading the position from Google Earth, and generally accurate to at most two decimal places, however four decimal places are given to account for strandings with more detailed information and to avoid strandings being placed on land. Negative latitudes are south of the equator; negative longitudes west of the Greenwich meridian.

Source	Date	Sex	Length (m)	Latitude	Longitude	Position name	Notes
Guiler (1978) from Hobart Town Gazette 6/5/1825	6/5/1825		29.3	-42.7833	147.0667	New Norfolk, Derwent River, Tasmania, Australia	
Blyth (1859)	15/8/1842		27.4	21.0000	92.1833	Chittagong coast about 21°N, Bangladesh	ID uncertain, length "as alleged", location approx from Google
Blyth (1859)	1851		25.6	18.7833	93.9667	Juggu/Amherst Is., S of Ramri, E of Cheduba on Arakan coast, Burma (Myanmar)	Skeleton in Indian Museum, Calcutta (Jones 1953); according to Rice (1998) some authors erroneously recorded location as Sondip or Sordip
Blyth (1859)	1858?		27.4	8.8833	76.5667	Quilon, India	ID uncertain
Dixon & Frigo (1994) and M'Coy (1867)	Aug 1866		27.4	-38.3333	144.3000	Jan Juc, outside Port Phillip Heads, Victoria, Australia	Total length recorded, baleen black
Burmeister (1871; 1872)	14/8/1866	Female	17.7	-34.3000	-58.4500	Mouth of Río Luján, near Buenos Aires, Argentina	Type specimen for <i>B. m. intermedia</i>
Warneke, R.M. from Anonymous (1874)	25/7/1874		26.5	-41.0927	146.0921	West side of Leven Estuary (Ulverstone), Tasmania, Australia	Length exclusive of tail, weight estimated 100–150 tons
Moses (1947)	1874		14.4	12.8333	74.8333	Mangalore, India	Skeleton in Madras Museum, ID confirmed in Gibson-Hill (1950)
Anderson (1878)	~Nov 1874			22.5000	91.4167	Sandwip (formerly Sondip) Island, Bangladesh	Young whale
De Silva (1987) from Murray (1884)	1879			24.8000	67.0167	Clifton beach, Pakistan	
Warneke, R.M. unpubl.	27/7/1887		19.2	-38.3333	145.4167	West of Warrnambool, Victoria, Australia	
De Silva (1987) from Haly (1894)	Sep 1894		19.8	6.2333	80.0500	Ambalangoda, Sri Lanka	Skeleton in Colombo Museum
Bannister <i>et al.</i> (2005)	1898		24.0	-33.6500	115.3167	Near Busselton, Western Australia	Physically immature Antarctic blue whale, skeleton in WA Museum
Pillay (1926) and James & Soundararajan (1979)	1901		~22	8.1000	77.4000	Rajakamangalam, 5 miles south of Muttum lighthouse between Colachel and Cape Comorin, India	Total length estimated from jaw bone lengths of 5.56 m each, lower jawbone at Travancore Museum
Waite (1912)	8/2/1908	Female	26.5	-43.1333	170.2333	Near Commissioner's Point, 10.5 km north of Okarito, New Zealand	Length from tip of snout to notch of tail, 30.2 m over curves of back; skeleton at the Canterbury Museum, Christchurch (Stollman <i>et al.</i> 2005)
Kinnear (1915)	1/1911		21.3	16.9667	72.2833	Viziadrug, Ratnagiri District, India	Measured from nose to tip of tail in straight line, blue-black baleen
Prater (1915)	11/12/1914	Male	12.5	16.8000	73.3167	Dhabol, 155 km south of Bombay, India	Measured from tip of snout to tip of flukes, ID uncertain
Reuter (1919)	Dec 1916		27.28	-7.7000	107.7500	Pameungpeuk, between Tjilauteureun and Tjikelet, Java, Indonesia	Length from extremities of flukes to tip of lower jaw, skeleton in zoology museum in Bogor
Warneke, R.M. unpubl.	4/7/1923	Male	22.6	-38.6667	145.5833	"The wreck", Wonthaggi, Victoria, Australia	
Baker, A.N. unpubl.	1/1/1925	Female	30	-36.5667	174.7167	Orewa, New Zealand	
Waite (1926)	5/8/1925		7.42	-34.2500	138.2167	Head of Gulf St Vincent, South Australia, Australia	Juvenile, carefully measured
Moses (1947)	Nov 1927		28.7	9.9667	76.2333	Cherai, Cochin, India	Skeleton at St. Aloysius College, Mangalore, India
Rudolph <i>et al.</i> (1997) from Delsman (1932)	Dec 1931		17	-7.2167	113.2333	Sampang, Madura Island, Indonesia	
De Silva (1987) from Pearson (1932) ¹	26/5/1932	Male		8.5333	81.1500	Tamblegam Bay, Trincomalee, Sri Lanka	
De Silva (1987) from Pearson (1932) ¹	30/6/1932		20.1	8.4667	81.2167	Koddiyar Bay, Trincomalee, Sri Lanka	
Deraniyagala (1960)	6/2/1934		15.14	5.9333	80.5333	Polhena, Matara (S.P.), Sri Lanka	Described as fin whale but uniform black color and all-black baleen; photo in De Silva (1987)
Jones (1953)	Jan/Feb 1934			21.6833	88.1667	Jambudwip, Bengal coast, India	Decomposition advanced
McCann (1934)	7/5/1934		15.8 or ~21.3	18.9000	72.8000	Colaba Reclamation, Mumbai, India	Exact location difficult to determine

Deraniyagala (1965)	10/1/1939		~19.5	6.0833	80.1333	Dodanduwa (S.P.), Sri Lanka	Length estimate uncertain
Moses (1940)	21/3/1939	Female	24.1	22.4000	68.9500	Mulvel, Okhamandel, India	
Deraniyagala (1948)	23/1/1946	Female	18.3	8.5667	81.2167	Trincomalee Harbour, Sri Lanka	Gave birth the next day in the harbour, towed to safety
Deraniyagala (1960)	8/4/1949			6.8833	79.8500	Bambalapitiya (W.P.) Colombo, Sri Lanka	
Chari (1951)	14/5/1951		20.7	20.2000	72.7500	Umargam, 160 km from Bombay, India	Decomposition advanced, 20.7 m from tip of snout to centre of flukes, some later sources erroneously reported as 22.6 m
Wakefield (1967)	Apr 1955		18	-38.4167	144.1833	Anglesea, 50 miles SW of Melbourne, Victoria, Australia	Approximate length
Wakefield (1967)	c.1957		18.3	-38.2667	141.8500	Fitzroy River mouth, Portland Bay, Victoria, Australia	
Kewalramani (1969)	27/12/1960	Female	23.8	21.5333	72.6833	Soonvai Creek near village Ganeshghan in Bhal area of Vallabhipur Taluka., Bhavsagar Dt., Gujarat, India	Location uncertain, some later sources erroneously reported as 23.4 m on 7/12/1960
Daniel (1963)	23/2/1963		20.28	23.0667	72.7167	Village Gavier, near Magdalla Port, 11 km from Surat, Gujarat, India	
Al-Robaae (1974)	6/6/1963			29.3333	48.1167	In muddy area, "Kadguma", Kuwait; location uncertain	Skeleton at Natural History Museum, Shuaikh Secondary School, Kuwait
Nagabhushanam & Dhulkhed (1964)	21/4/1964		15.76	13.4167	74.6750	Muloor village, India	Decomposition advanced, length from tip of lower jaw to fluke notch
Siddiqi (1968)	1965			25.2667	63.4833	Juddi near Pasni, Mekran coast, Pakistan	Location of "Juddi" not known, lower jaw 3.0 m, skeleton in Zoological Survey Museum, Karachi, Pakistan
De Silva (1987)	3/4/1965			6.8833	79.8500	Wellawatte or Wellawatta (W.P.), Sri Lanka	
De Silva (1987)	14/4/1965			9.0000	80.9500	Kokkilai near Pulmoddai (E.P.), Sri Lanka	
James & Soundararajan (1979)	5/2/1966		13.65	9.2833	79.1167	Mandapam (Palk Bay), India	Putrefied specimen
Venkataraman & Girijvallabhan (1966)	25/5/1966		13.51	11.2500	75.7667	Kannanparambu, 1km south of South Beach, Calicut, India	Calicut = Kozhikode, flipper:TL 1:8.6, baleen missing, ID uncertain
Warneke, R.M. unpubl.	6/2/1967		18.3	-41.1167	146.1333	Three Sisters Island, Tasmania, Australia	Approximate length
Siddiqi (1968)	Jun 1967		18.3	25.2167	63.4000	5 mi west of Pasni, Makran coast, Pakistan	Lower jaw 5.5 m, in Zoological Survey Museum, Karachi, Pakistan
Bensam, Vincent & Mahadevan Pillai (1972)	2/4/1969	Female	11.26	8.7833	78.1667	Tuticorin, Gulf of Mannar, India	Juvenile, alive but shot and killed before brought to shore; ID uncertain
IWC catch database, Bannister <i>et al.</i> (2005)	May 1973	Female		-35.0500	117.8833	Princess Royal Harbour, Albany, Australia	Processed, yielded 118 barrels
Al-Robaae (1974)	Unknown			29.3333	48.1167	Entangled in submarine telegraph cable Masket, Arabia	
Bannister <i>et al.</i> (2005)	May 1974			-35.0667	117.8667	Princess Royal Harbour, Albany, WA, Australia	
Cawthorn (1978)	1975			-39.1167	173.9500	Onetai Beach, Taranaki, New Zealand	
De Silva (1987)	Mar 1976	Female		6.9333	79.8500	Galle Face, Colombo (W.P.), Sri Lanka	Mother and calf
Warneke, R.M. unpubl. and Leatherwood (1986)	5/4/1976	Male	17.5	-38.3833	142.0500	Levy's Point, Victoria, Australia	
Marichamy, Rajapandian & Srinivasan (1984)	20/12/1976	Female	6.35	8.2667	77.9000	Near Ovari, Gulf of Mannar, India	Immature female
James & Soundararajan (1979)	4/10/1977	Female	10-12	9.2833	79.1833	Pamban, Palk Bay, India	Entangled live in gillnet
Baker, A.N. unpubl.	30/4/1978		27.4	-36.5667	174.7167	Orewa, New Zealand	
Leatherwood (1986) from Fernando (1981) ¹	9/2/1981			7.5833	79.7833	Chilaw, Sri Lanka	
Praderi (1985)	9/7/1983		18.3	-34.4333	-57.6000	Uruguay	
Venkataramanujam, Paulraj & Ramadhas (1984)	11/9/1983		11.67	8.2000	77.1667	Erayumanthurai near Thengapattinam, Tamil Nadu, India	Black baleen plates, advanced decomposition
Anderson, Shaan & Waheed (1999)	1984		19	7.0167	73.2500	H.A Dhidhoo, floating at sea, Maldives	

Van Waerebeek <i>et al.</i> (1997)	24/2/1984		23	-36.6167	-72.9500	Coliumo Bay, near Tome, Chile	
Anderson <i>et al.</i> (1999)	30/1/1985		22	3.5167	73.5667	V. Thinadhoo, floating off V. Maadhiggaru, Maldives	Approximate length
Anderson <i>et al.</i> (1999)	16/2/1985		21	2.5000	73.3167	Th. Vilufushi, floating near reef, rotten, Maldives	Approximate length
Somasekharan & Jayaprakash (1987)	31/9/1985	Male	10.3	9.9667	76.2333	Chappa Beach, Narakkal, Cochin, India	Date may be 31/8/1985; total length 7.7 times flipper length, identification uncertain.
Ilangakoon, A.D. unpubl.	11/7/1986		18.9	7.5807	79.8047	Chilaw (north-west coast) Sri Lanka	
Anonymous (1987b)	18/10/1986		13	10.9000	75.8833	Tirur beach, India	Photograph provided
Smith <i>et al.</i> (1997)	19/1/1987		21.9	18.3333	94.3333	One mile from shore, Andrew Bay (Thabyugyaing), Myanmar (Burma)	Skeleton now in Yangon Zoological Gardens
Rudolph <i>et al.</i> (1997)	22/6/1987		23.5	-3.2667	127.1167	Namlea, Buru Island	Skeleton in Ambon Museum
Lal Mohan (1992)	29/9/1988	Female	19.2	12.1667	76.5000	Paravana, near Calicut, India	Flippers 2.5m, 1/7 total length; 80 throat grooves
Nammalwar <i>et al.</i> (1989)	10/12/1988	Male	15.16	16.9167	82.3167	Motupally, near Ramachandrapuram, Andhra Pradesh, Prakasam District, India	Measured from tip of upper jaw to notch of caudal fluke
Kemper, C., South Australian Museum, pers. comm.	19/9/1989	Female		-34.7300	138.5000	Gulf St. Vincent, Australia	
Warneke, R.M. unpubl.	4/12/1991	Male	20	-39.9500	143.8500	British Admiral Beach, King Island, Tasmania, Australia	Approximate length
Baker, A.N. unpubl.	1/3/1992	Female	16.4	-35.8167	174.5333	Whangarei harbour, New Zealand	
Dalla Rosa & Secchi (1997)	29/4/1992	Female	23.1	-33.7500	-53.3800	2 km from Chui Bar southern Brazil, near border with Uruguay	Genetic sample held by L. Pastene
Dixon & Frigo (1994)	5/5/1992	Male	18.17	-38.4833	144.0167	Cathedral Rock, 5 km NE of Lorne, Victoria, Australia	
Bannister <i>et al.</i> (2005)	Mar 1993			-32.2000	115.6667	Garden Island, WA, Australia	
James, Menon & Pillai (1993)	2/5/1993		26	9.9667	76.2333	Chellanam, Cochin, India	Carcasse putrefied, length approximate
LeDuc <i>et al.</i> (1997)	14/6/1993			-34.5167	135.3167	Australia	
Van Waerebeek <i>et al.</i> (1997)	30/8/1993		12.5	3.6048	-77.2042	Periquillo beach, Colombia	
Mohanraj, Somaraju & Seshagiri Rao (1995)	9/5/1994	Male	11.73	17.8333	83.4167	Off Mangamaripeta, 12 km north of Visakhapatnam, India	Live male caught in drift gillnet, length from tip of upper jaw to notch of caudal fluke, some later sources erroneously list date as 9/5/1995
Baker, A.N. unpubl.	11/9/1994	Male	20.6	-36.5667	175.0333	Hauraki Gulf, New Zealand	Hit by ship, identified as pygmy blue
Lipton <i>et al.</i> (1995)	25/11/1994		13.3	9.1833	79.4000	Dhanushkodi, India	Measured from snout to notch of caudal fluke
Van Waerebeek <i>et al.</i> (1997)	7/2/1995	Female	18	-33.9000	-71.8333	300 m north of mouth of Rapel River, Chile	Decomposing
LeDuc <i>et al.</i> (1997)	9/5/1995			-36.9833	139.7000	Australia	
Van Waerebeek <i>et al.</i> (1997)	3/1/1997	Female	20.44	-11.0393	-77.6597	Isla don Martin, Peru	
Anderson, R.C. unpubl.	5/1/1997		16	3.2500	73.5000	V. Rakeedhoo, Maldives	Floating at sea. Mandibles (longest 482cm) and scapula on island
Anderson <i>et al.</i> (1999)	20/1/1997		18	2.2500	73.3000	Th. Guraidhoo, floating in Veimandhoo Kandu, Maldives	Approximate length
Van Waerebeek <i>et al.</i> (1997)	20/3/1997		23	-41.1667	-73.9050	Near Llico Bajo, X Region, Chile	
Anderson <i>et al.</i> (1999)	3/1/1999		19	6.2000	73.0333	Sh. Medukumburudhoo, washed on beach, Maldives	
Ilangakoon, A.D. unpubl.	21/7/1999	Female	21.9-23.8	5.9612	80.4288	Kaparatota/Weligama (south coast) Sri Lanka	
McCauley <i>et al.</i> (2004)	6/11/2000		21	-13.7500	126.1330	Troughton Island, Kimberleys, Australia	
Baker, A.N. unpubl.	14/11/2001	Female	15.2	-34.6333	173.0167	Henderson Bay, New Zealand	Pygmy blue?
McCauley <i>et al.</i> (2004), Jenner, K.C.S. unpubl.	9/12/2001		22.3	-34.0881	114.9989	Cape Freycinet, Western Australia, Australia	ID as pygmy blue whale; location incorrectly reported as Margaret River

Borsa & Hoarau (2004), Borsa (2006)	29/1/2002	Male	16.5	-22.3333	166.8167	Baie de la Somme, New Caledonia	
Anderson, R.C. unpubl.	9/12/2002		15	4.1667	73.5167	SW outer reef, K. Malé, Maldives	Rotten, most of head missing, vertebral epiphyses not fully fused
Krishnan <i>et al.</i> (2004)	21/12/2001		12.3	13.3000	74.7000	Beach of Gujjerbettu, Udipi district, Karnataka, India	Dorsal fin 1% of total length
Ilangakoon, A.D. unpubl.	15/10/2003	Female	20.1	6.9103	79.8492	Bambalapitiya/Colombo (west coast) Sri Lanka	
Ilangakoon, A.D. unpubl.	2/4/2004	Male	19.8-21.3	6.9418	79.8597	Colombo Harbor (west coast) Sri Lanka	
Ilangakoon, A.D. unpubl.	11/7/2004		18	8.1377	79.7005	Thalawila (north-west coast) Sri Lanka	
Anderson, R.C. unpubl.	6/1/2005		23	4.2500	73.5500	On outer reef, K. Furana, Maldives	Rotten, tail and part of head missing, photos held at MRC
Hucke-Gaete <i>et al.</i> (2005); Galletti Vernazzani, B. unpubl.	29/3/2005	Male	23 or 24.38	-41.9861	-74.0333	Pumillahue Bay, NW Chiloé Island, Chile	
Bannister <i>et al.</i> (2005)	16/12/2005	Female	20.8	-32.0167	115.4686	Strickland Bay, Rottneest Island, Western Australia	Tail-anus/total length = 0.24, therefore likely a pygmy blue whale
Anderson, R.C. unpubl.	19/12/2005		20	4.6833	73.4333	K. Olhahahi, Maldives	Photos held at MRC

¹ Details of original reference have not been obtained or were not listed in citing paper.

Appendix 3. Details of blue whales marked and recaptured in the Southern Hemisphere, ordered by Discovery tag number. When two marks were recovered from one whale, they were both fired on the same day and at the same location, except for two instances detailed in the footnotes. Where the notes indicate “uncertain”, and probably in instances where length and sex were not recorded, the mark was recovered from the cooker, digester, boiler or stored meat. In such cases, a range of possible recapture locations and dates was often recorded and the central such position and date reported here. Code prefix “G” indicates a German mark and “USSR” a Soviet mark. CL = corpora lutea count, EP = ear plug laminae.

Code	Marked latitude	Marked longitude	Marked date	Recaptured latitude	Recaptured longitude	Recaptured date	Sex	Length at capture (m)	Distance (km)	Duration (days)	Notes
656/1229 ¹	-54.7167	-33.9833	26/12/1934	-54.5000	-34.3167	29/12/1934	Female	24.1	32	3	
700	-54.2500	-33.9667	06/12/1934	-54.1833	-34.8333	11/12/1934	Male	23.8	57	5	
825/853	-54.9167	-35.2333	30/11/1934	-55.1333	-34.5333	30/11/1934	Male	23.5	51	0	
859	-54.9000	-35.2333	30/12/1934	-54.5000	-37.0000	28/11/1946	-	-	122	4,351	
903	-54.0167	-38.8500	12/01/1935	-55.4000	-33.7833	19/01/1935	Female	23.9	360	7	
1123/1125	-55.0000	-34.3333	29/12/1934	-62.3333	-45.8333	12/01/1939	Female	25.3	1,048	1,475	
1245	-54.8833	-34.5667	27/12/1934	-59.3833	-9.3667	30/12/1939	-	-	1,589	1,829	
2026	-57.4333	23.8333	14/12/1935	-61.0000	87.0000	16/12/1936	-	-	3,473	368	
2525	-56.6667	39.0000	05/12/1934	-64.5500	22.8333	01/02/1937	Female	22.9	1,236	789	
2537	-56.6000	35.7500	04/12/1934	-57.6167	16.4667	22/12/1938	Female	25.5	1,165	1,479	
2548	-58.3500	49.2667	08/12/1934	-59.0000	34.2500	02/12/1937	Male	24.4	869	1,090	
2816	-63.3500	53.5333	17/01/1935	-64.0000	90.0000	09/03/1936	-	-	1,774	417	
2892	-63.5333	47.2833	22/01/1935	-65.2833	84.5000	26/02/1936	Male	25.9	1,770	400	
2902	-63.5333	47.9500	22/01/1935	-66.0000	15.0000	12/03/1935	-	-	1,566	49	
2903	-63.5333	47.9500	22/01/1935	-63.9333	45.9333	26/01/1935	Male	26.2	109	4	
2910	-62.7500	46.3667	24/01/1935	-63.4167	45.9333	26/01/1935	Female	21	77	2	
2960/2965	-62.7667	43.0833	26/01/1935	-64.7667	41.4167	31/01/1935	Female	22.1	237	5	
2963	-62.6500	43.9667	26/01/1935	-62.6500	34.8833	08/02/1935	Female	25.9	463	13	
3013	-61.9167	43.2833	28/01/1935	-64.2333	29.7500	27/03/1935	Female	22.9	726	58	
3023	-62.0167	43.3500	28/01/1935	-63.6167	39.9000	09/01/1936	-	-	250	346	
3528	-63.4333	26.1833	28/02/1935	-64.4500	79.4500	17/01/1937	Female	22.6	2,526	689	
3598	-63.3833	8.3000	08/03/1935	-60.0000	32.0000	20/01/1948	-	-	1,296	4,701	
3771	-54.1833	-39.2500	04/12/1935	-54.8667	-32.6833	14/11/1936	Male	24.2	430	346	
3853	-56.1333	-36.0167	11/12/1935	-63.3667	-47.1167	07/03/1936	Female	22.6	1,013	87	
4122	-57.2833	-33.9167	27/12/1935	-54.5667	-33.7000	30/12/1935	-	-	302	3	
4563	-55.3167	-36.6500	02/01/1936	-59.7333	-29.7667	02/02/1936	Male	22.9	639	31	
4843	-54.8667	-33.7333	18/01/1936	-55.2333	-34.2500	22/01/1936	-	-	52	4	
5245	-62.1333	87.6167	01/02/1936	-63.9167	87.4667	08/02/1936	Female	26.8	198	7	
5261	-61.9333	88.7000	01/02/1936	-61.8667	82.9500	02/01/1938	Female	25.9	301	701	
5456	-63.9500	99.3167	13/02/1936	-56.6333	12.3500	09/01/1948	Female	27.7	4,474	4,348	Pregnant
5525	-63.2500	94.3167	16/02/1936	-63.7333	94.4167	17/02/1936	Female	25.3	54	1	
5632	-63.7500	81.8500	22/02/1936	-57.3833	31.6667	20/12/1947	Female	-	2,751	4,319	Pregnant
5728	-63.8167	54.4000	02/03/1936	-56.8000	17.0333	08/01/1937	-	-	2,161	312	
5800	-64.4000	45.8167	08/03/1936	-63.2333	72.3667	03/01/1938	Female	23.5	1,299	666	

7705	-54.9000	24.8167	13/12/1936	-61.1167	20.8333	09/02/1937	Female	24.4	729	58
8743	-64.8667	30.7000	13/02/1937	-55.5000	27.5000	15/12/1947	-	-	1,055	3,957 Uncertain
10427/10431	-55.8167	-0.2333	17/12/1937	-55.2000	-35.4000	24/02/1939	Female	22.1	2,190	434
10638	-58.8000	-31.3667	01/01/1938	-61.2500	-20.3500	09/01/1938	Male	22.9	668	8
11354	-61.5000	54.8333	07/01/1953	-68.6333	17.2833	18/03/1954	-	-	1,890	435
12186	-56.4667	-6.9500	29/11/1953	-54.5000	-37.0000	23/03/1954	-	-	1,889	114
12362	-57.3667	-32.6000	23/12/1953	-60.0000	-41.0000	20/01/1954	-	-	566	28 Uncertain
12363	-57.6333	-32.7000	23/12/1953	-61.3000	-31.4333	16/02/1954	Male	23.2	414	55
12391	-59.8833	-37.2500	10/12/1953	-68.3333	-15.5000	12/03/1954	Male	23.2	1,399	92
12438	-53.9167	8.6667	29/11/1954	-62.1000	-12.0000	21/02/1956	-	-	1,508	449
12770	-58.7833	42.2500	03/11/1955	-65.1833	82.3667	03/03/1957	Female	24.1	2,168	486
12777	-57.7667	39.9167	04/11/1955	-69.2167	17.0000	09/03/1957	-	-	1,686	491 Uncertain
12826	-54.4000	24.5667	10/11/1955	-69.0000	4.0000	14/02/1957	-	-	1,930	462 Uncertain
13147	-62.9500	-38.0333	16/11/1955	-65.0500	-26.8667	18/02/1956	-	-	591	94
13400	-60.3167	55.2000	02/12/1957	-64.4000	48.8167	03/02/1959	Female	24.7	560	428
14645	-64.5000	-157.6833	05/01/1956	-68.2833	-125.8833	07/02/1958	Male	23.2	1,458	764 Uncertain
14661	-62.7667	-127.0833	09/12/1955	-66.2667	-148.1167	17/02/1957	Female	22.9	1,072	436 CL 0 EP 7
14730	-62.7833	60.0000	17/12/1955	-67.4000	-127.4167	22/02/1958	Male	22.3	5,523	798
15216	-59.4000	41.2167	02/11/1955	-61.6167	-8.1500	17/02/1956	Male	21.3	2,646	107
17406	-60.2500	139.0000	01/01/1957	-70.7167	161.1333	12/03/1959	Female	21.3	1,529	800
17629	-67.3000	-82.3333	22/12/1956	-67.7333	-89.9833	02/02/1957	Female	23.5	328	42
17644	-65.7000	-85.3333	23/12/1956	-66.3333	-122.4167	02/02/1957	Female	23.2	1,652	41 CL 0 EP 7
17645	-65.4667	-87.8333	23/12/1956	-72.3333	-156.0000	18/02/1958	-	-	2,665	422
17745	-66.6500	-89.0667	03/01/1957	-66.2000	-95.7833	01/02/1957	Male	25	303	29
17866	-65.8500	-92.6333	20/12/1956	-66.0000	-95.0000	01/02/1957	Male	24.7	109	43
18027	-65.2000	-179.3167	02/12/1957	-65.8667	48.5667	22/03/1962	-	-	4,943	1,571 Uncertain
18085	-64.8833	-164.0667	04/12/1957	-67.1667	168.5833	14/02/1959	Female	25.6	1,250	437 CL 19
18155/18194 ²	-65.5500	-80.8000	23/12/1957	-69.0167	-132.4000	08/02/1958	Female	21.9	2,179	47
18163	-65.5500	-80.8000	23/12/1957	-57.9000	87.7500	27/02/1962	Male	24.1	6,250	1,527 EP 12
18166	-65.4333	-81.0000	23/12/1957	-69.0000	-96.6333	23/02/1958	Male	22.3	778	62
18235	-65.8833	-73.8667	02/01/1957	-67.5000	-128.3333	09/02/1957	-	-	2,324	38
18318	-64.2667	155.7333	30/12/1957	-63.7667	85.0667	12/02/1959	Male	21.9	3,262	409
18323	-64.0333	156.0333	30/12/1957	-67.6167	162.9167	09/02/1958	Male	22.9	506	41
18981	-61.0833	-56.3333	20/12/1956	-67.3167	-132.7833	04/02/1957	Female	21.6	3,516	46 CL 0
19705/19719	-60.2333	60.1667	21/12/1957	-63.5000	99.5000	15/02/1958	Female	20.7	2,058	56
19720/19728	-60.9500	57.8333	21/12/1957	-61.5167	70.0000	05/02/1959	Male	23.5	653	411
19754	-61.3167	54.8333	22/12/1957	-64.2333	16.7667	02/02/1958	Female	-	1,932	42
19762	-60.8667	54.5000	24/12/1957	-66.0000	40.0000	15/02/1959	-	-	915	418
19766	-60.9000	51.3667	23/12/1957	-64.7500	-15.7500	25/02/1958	-	-	3,270	64 Uncertain
19768	-60.8667	54.5000	24/12/1957	-63.1167	94.4833	13/02/1958	Male	21.9	2,067	51

19772	-60.8500	54.4667	24/12/1957	-62.5000	84.5000	15/02/1958	-	-	1,579	53 Uncertain
19792	-60.9833	55.2667	24/12/1957	-64.8500	19.8000	06/02/1958	Female	21.3	1,819	44
19798	-61.3167	55.6333	24/12/1957	-62.5000	84.5000	15/02/1958	-	-	1,503	53 Uncertain
19799	-60.9833	55.4000	24/12/1957	-55.0833	35.3500	20/03/1962	-	-	1,342	1,547
19834	-67.3000	171.1333	15/12/1957	-64.5000	136.0000	20/02/1959	Male	22.9	1,601	432
20512	-65.2000	157.0833	19/12/1958	-65.6667	139.8333	08/02/1959	Male	23.8	796	51
20515	-65.2333	157.0333	19/12/1958	-64.4167	123.5000	13/02/1959	Female	23.8	1,569	56 EP 7
22321	-63.0667	137.0167	16/12/1959	-57.3333	95.6667	04/02/1960	Male	22.9	2,325	50 EP 11
22543	-59.3333	83.7667	22/12/1959	-58.8500	73.5333	04/02/1960	Male	21.9	586	44 EP 11
24027	-55.7667	80.2167	15/12/1960	-60.8500	38.9167	>05/03/1962	-	-	2,432	>445 "1961/62"
24535	-58.9667	38.6000	19/12/1960	-67.1333	-3.5833	21/02/1961	Female	24.7	2,254	64
25576	-56.2500	49.0500	01/12/1962	-43.9167	50.0333	04/04/1963	Male	21.5	1,372	Pygmy, testes 16.0 124 kg, 14.5 kg
25605/25607	-59.3833	66.7667	23/11/1962	-54.5833	36.4333	05/03/1964	Female	24.2	1,894	468 CL 0 EP 10
G01111	-63.0000	25.7500	18/02/1939	-63.8333	33.6667	12/01/1940	Male	19.5	404	328
G01201	-59.0000	30.0000	07/12/1938	-64.9000	62.3833	02/01/1951	Female	27.4	1,790	4,409 Pregnant
G01305	-60.8333	31.8333	31/12/1938	-60.4000	30.5167	02/01/1939	-	-	86	2
G01306	-65.0000	35.0000	09/02/1939	-65.4500	28.1500	06/03/1939	-	-	323	25
G01309	-59.4167	33.8333	06/12/1938	-61.4000	36.9000	20/12/1938	Female	25.3	277	14
G01370	-65.2333	35.0000	26/02/1939	-65.4500	28.4833	06/03/1939	-	-	303	8
USSR-25601	-59.3833	66.7667	23/11/1962	-63.5000	26.0833	02/01/1967	Male		2,170	1,501
USSR-25608	-59.3833	66.7667	23/11/1962	-63.6167	26.1667	02/01/1967	Female		2,164	1,501
USSR-25619	-59.1333	68.3333	23/11/1962	-59.6000	54.3667	10/01/1963	Female		791	48

¹Mark latitude of 1229 was -54.6500

²Mark longitude of 18194 was -80.8333

Appendix 4. List of sources for acoustic detections of blue whales in the study region. The reference, region (positions rounded to whole degrees), call type, recording method, and dates are listed. Where sources are “unpubl.” this is shorthand for “unpublished data”.

Source	Region	Call type	Recording method	Recording duration	Dates calls recorded
Alling <i>et al.</i> (1991)	East coast, Sri Lanka	Sri Lanka	Dipping hydrophone	Feb–Apr, 1984	Feb–Apr, 1984
Clark, C.W. & Martin, A.R., pers. comm.	South Georgia 54°S 38°W	Antarctic	Moored instrument	4–5 Apr 2004	4–5 Apr 2004
Cummings & Thompson (1971)	Guafo Island, Chile	Southeast Pacific	Dipping hydrophone	30–31 May 1970	30–31 May 1970
Ensor <i>et al.</i> (1999), Clark & Fowler (2001)	Antarctica Areas III, IV	Antarctic	Sonobuoy	Jan–Feb 1999	10, 15, 25 Jan; 4, 9, 21 Feb 1999
Ensor <i>et al.</i> (2000), Ljungblad, D. unpubl.	Antarctica Area I 67–71°W	Antarctic	Sonobuoy	Jan–Feb 2000	26 Jan; 11 Feb 2000
Ensor <i>et al.</i> (2004)	Antarctica Area V 175°W–175°E	Antarctic	Sonobuoy	Jan–Feb 2004	19 Jan; 7–21 Feb 2004
Ensor <i>et al.</i> (2006)	Antarctica Area III 0–20°E	Antarctic	Sonobuoy	18 Jan–13 Feb 2006	18 Jan–13 Feb 2006
Kibblewhite <i>et al.</i> (1967)	Three Kings Island, New Zealand	New Zealand	Moored instrument	One day; date unknown	Unknown
Ljungblad <i>et al.</i> (1998)	Antarctic area II	Antarctic	Sonobuoy	7 Jan–26 Feb 1997	29–30 Jan 1997
Ljungblad <i>et al.</i> (1998)	Madagascar Plateau 25–35°S 40–45°E	Madagascar	Sonobuoy	7–28 Dec 1996	28 Dec 1996
McCauley <i>et al.</i> (2004)	Cape Leeuwin, Australia	Antarctic	Moored instrument	Oct 2002–Jul 2004	May–Oct, 2002–2004
McCauley <i>et al.</i> (2004)	Cape Leeuwin, Australia	Australian	Moored instrument	Oct 2002–Jul 2004	Nov–Jun, 2002–2004
McCauley, R.D. unpubl.	Bass Strait 40°S 145°E	New Zealand	Moored instrument	Mar–Aug 2002	Jun 2002
McCauley, R.D. unpubl.	Bass Strait 40°S 145°E	Australian	Moored instrument	Mar–Aug 2002	Jun 2002
McCauley, R.D. unpubl.	Robe, South Australia 37°S 140°E	Australian	Moored instrument	Nov 2004–Jun 2005; Nov 2005–Jun 2006	Jan–Apr, 2005–2006
McCauley, R.D. unpubl.	Perth Canyon, Australia 32°S 115°E	Australian	Moored instrument	Jan 2000–Dec 2005	Nov–June, 2000–2005
McCauley, R.D. unpubl.	Exmouth, Australia 21°S 114°E	Australian	Moored instrument	Oct 2003–Oct 2004	Nov–Dec 2003, Jun 2004
McKay <i>et al.</i> (2005)	East Antarctica 67°S 70°E	Antarctic	Moored instrument	Feb 2003–Jan 2004	Year-round but peaks Apr–Jun, Nov
McDonald (2006)	North Island, New Zealand	Antarctic	Moored instrument	Jan–Dec 1997	May–Jul 1997
McDonald (2006)	North Island, New Zealand	New Zealand	Moored instrument	Jan–Dec 1997	Once each in Jun, Jul, Sep, Dec 1997
Norris, T.F. unpubl.	Islas Lobos De La Fuera, Peru	Southeast Pacific	Sonobuoy	2–3 Nov 2000	2–3 Nov 2000
Rankin <i>et al.</i> (2005)	Antarctic area V 150°E–170°W	Antarctic	Sonobuoy	6–8, 21, 29, 31 Jan 2002	6–8, 21, 29, 31 Jan 2002
Rankin <i>et al.</i> (2005)	Antarctic area V 130°E–150°E	Antarctic	Sonobuoy	23–24 Jan 2003	23–24 Jan 2003
Samaran <i>et al.</i> (2006)	Crozet Island	Antarctic	Moored instrument	May 2003–Apr 2004	Unknown
Samaran <i>et al.</i> (2006)	Crozet Island	Madagascar	Moored instrument	May 2003–Apr 2004	Unknown
Širović <i>et al.</i> (2004)	Western Antarctic Peninsula	Antarctic	Moored array	Mar 2001–Feb 2003	Year-round but peaks Mar–Apr, Oct–Nov
Stafford <i>et al.</i> (1999)	Eastern tropical Pacific 8°S 95°W	Southeast Pacific	Moored instrument	May 1996–May 1997	Year-round but peaks Mar–Aug
Stafford <i>et al.</i> (1999)	Eastern tropical Pacific 8°S 95°W	Antarctic	Moored instrument	May 1996–May 1997	Jul 1996
Stafford <i>et al.</i> (2004)	Eastern tropical Pacific 8°S 95°W	Antarctic	Moored instrument	May 1996–Nov 2002	Jun–Sep, peaks in Jul
Stafford <i>et al.</i> (2004)	Indian Ocean Diego Garcia	Antarctic	Moored instrument	Jan 2002–Apr 2003	May–Aug, peaks in Jul
Stafford <i>et al.</i> (2004)	Indian Ocean Cape Leeuwin	Antarctic	Moored instrument	Jan 2002–Apr 2003	May–Nov, peaks in Jul
Stafford <i>et al.</i> (2005)	Indian Ocean Diego Garcia	Madagascar	Moored instrument	Jan 2002–Apr 2003	May–July, peak in July
Stafford <i>et al.</i> (2005)	Indian Ocean Diego Garcia	Sri Lanka	Moored instrument	Jan 2002–Apr 2003	May–January
Stafford <i>et al.</i> (2005)	Indian Ocean Cape Leeuwin	Australia	Moored instrument	Jan 2002–Apr 2003	December–June